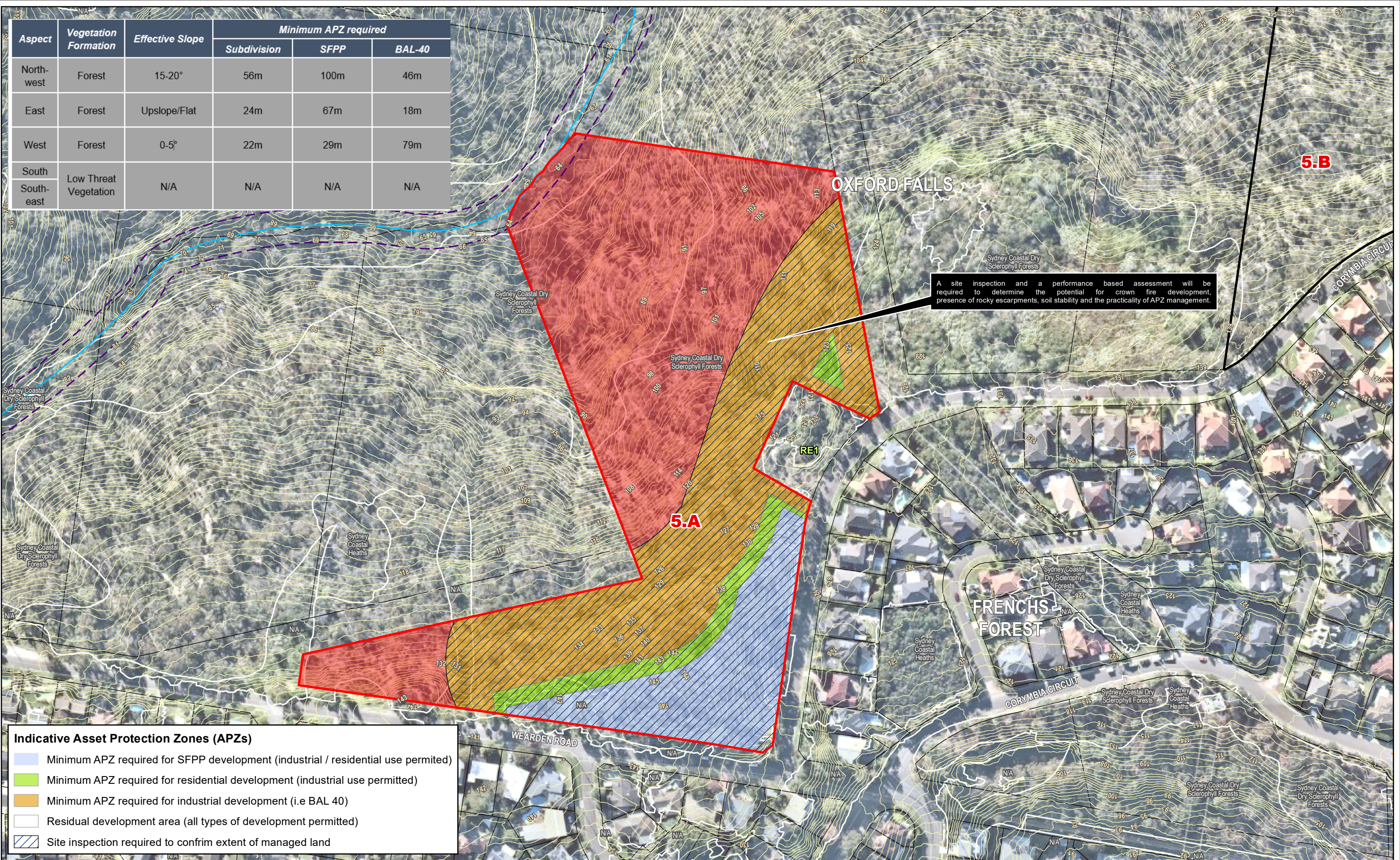


Aspect	Vegetation Formation	Effective Slope	Minimum APZ required		
			Subdivision	SFPP	BAL-40
North-west	Forest	15-20°	56m	100m	46m
East	Forest	Upslope/Flat	24m	67m	18m
West	Forest	0-5°	22m	29m	79m
South	Low Threat Vegetation	N/A	N/A	N/A	N/A
South-east					

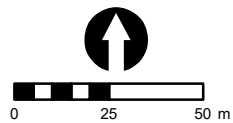


**Indicative Asset Protection Zones (APZs)**

- Minimum APZ required for SFPP development (industrial / residential use permitted)
- Minimum APZ required for residential development (industrial use permitted)
- Minimum APZ required for industrial development (i.e BAL 40)
- Residual development area (all types of development permitted)
- Site inspection required to confirm extent of managed land

**Legend**

- Investigation site boundary (source: LPI)
- Potential development area (C&R)
- Watercourse (source: LPI)
- Electricity Transmission Line
- Contour 1m (source: LiDAR)
- Slope 18-20 degrees
- Slope exceeding 20 degrees
- Firetrails
- Sydney Metro Area Vegetation (v3 2016 (VISID\_4489))
- Endangered ecological community (EEC)
- Potential biodiversity offset area



Disclaimer: The mapping is indicative of available space and location of features which may prove critical in assessing the viability of the proposed works. Mapping has been produced on a map base with an inherent level of inaccuracy, the location of all mapped features are to be confirmed by a registered surveyor.

**PROJECT & MXD REFERENCE**

Corymbia Circuit, Frenchs Forest  
18CR22\_5\_BF001

**DATE & ISSUE NUMBER**

15/07/2021  
Issue 1

**SCALE & COORDINATE SYSTEM**

1:2,000 @A3  
GDA 1994 MGA Zone 56

**TITLE**

**Bushfire constraints and development opportunities – Site 5A**

Document Path: N:\GIS STORAGE\N Drive\18CR22\_Belrose\_Cromer\_Forest\18CR22\_5\_BF001.mxd

