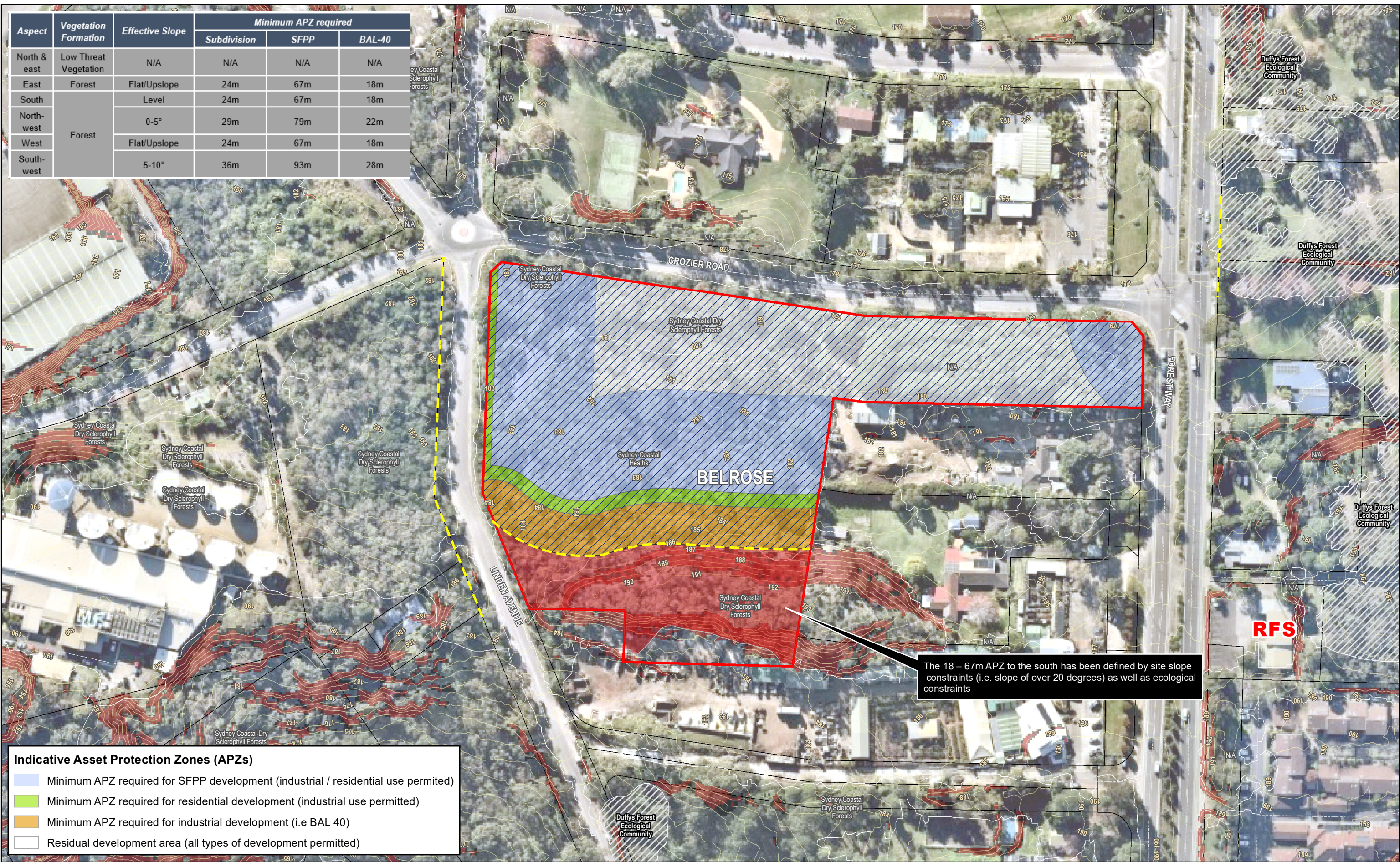
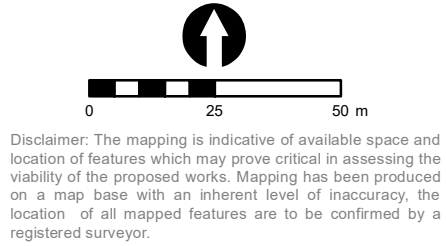


Aspect	Vegetation Formation	Effective Slope	Minimum APZ required		
			Subdivision	SFPP	BAL-40
North & east	Low Threat Vegetation	N/A	N/A	N/A	N/A
East	Forest	Flat/Upslope	24m	67m	18m
South	Forest	Level	24m	67m	18m
North-west		0-5°	29m	79m	22m
West		Flat/Upslope	24m	67m	18m
South-west		5-10°	36m	93m	28m



Indicative Asset Protection Zones (APZs)	
	Minimum APZ required for SFPP development (industrial / residential use permitted)
	Minimum APZ required for residential development (industrial use permitted)
	Minimum APZ required for industrial development (i.e BAL 40)
	Residual development area (all types of development permitted)

Legend	
	Investigation site boundary (source: LPI)
	Potential development area (C&R)
	Watercourse (source: LPI)
	Contour 1m (source: LiDAR)
	Slope 18-20 degrees
	Slope exceeding 20degrees
	Firetrails
	Endangered ecological community (EEC)
	Potential biodiversity offset area
Sydney Metro Area Vegetation (v3 2016 (VISID_4489))	
Aerial source: Nearmap	



PROJECT & MXD REFERENCE	DATE & ISSUE NUMBER	SCALE & COORDINATE SYSTEM
Forest Way, Belrose 18CR22_4_BF001	15/07/2021 Issue 1 EB	1:1,500 @A3 GDA 1994 MGA Zone 56
TITLE		
Bushfire constraints and development opportunities – Site 4		
Document Path: N:\GIS STORAGE\N Drive\18CR22_Belrose_Cromer_Forestville\MXD\Site 4\18CR22_4_BF001.mxd		

