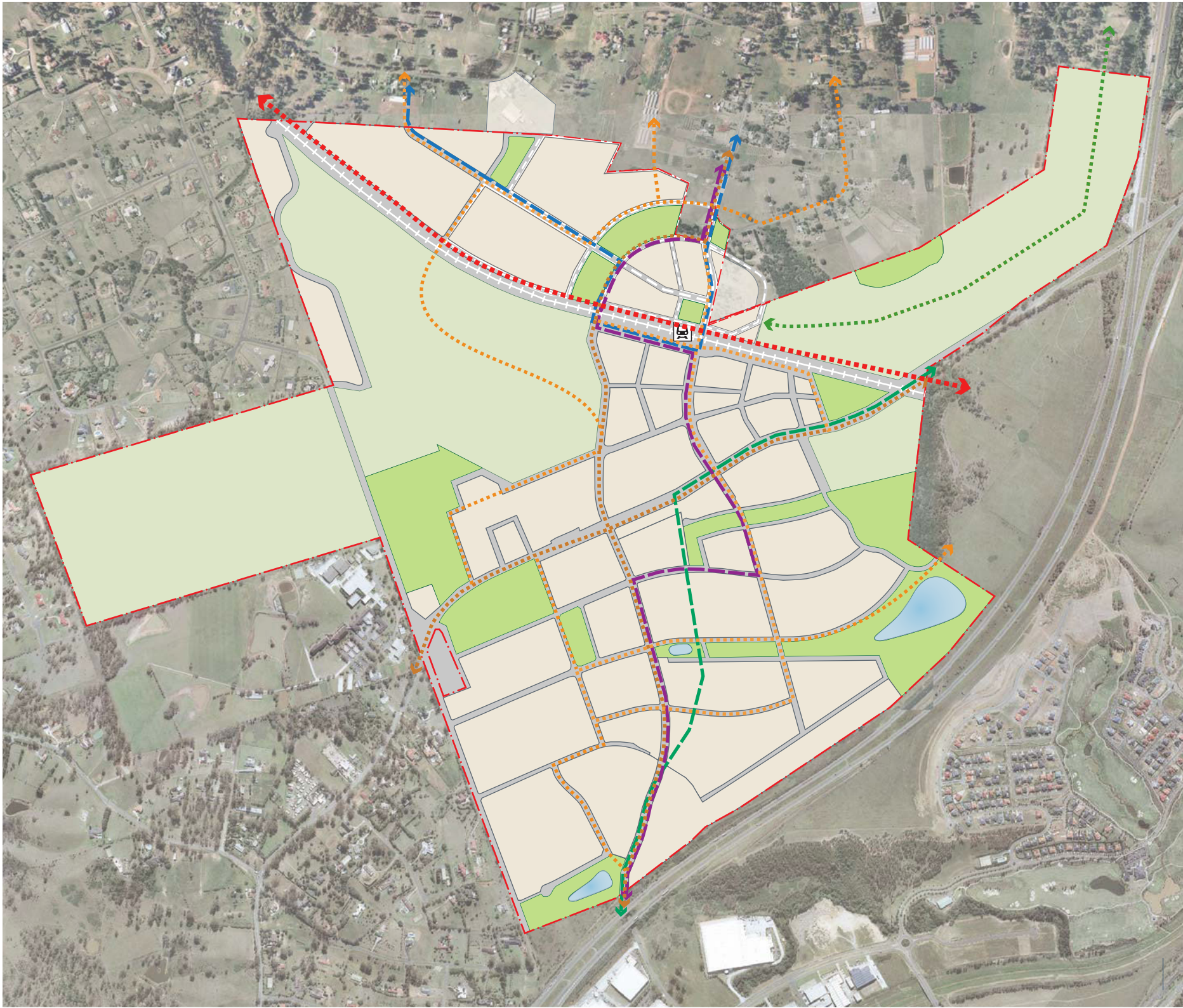


KEY

- Site Boundary
- L.G.A. Boundary
- General Residential
- Environmental Living
- Mixed Use Town Centre
- Public Open Space
- Regional Park
- Heritage Precinct
- Substation
- TCA Rail Corridor
- Train Station
- Schools
- Pedestrian Link over TCA Corridor
- Ornamental Pond
- OSD Basin
- Sewer Line
- Road Links
- Former School Site
- General Residential/Schools

Dwg Name: Concept Plan (Mod 2)
Date: August 2020



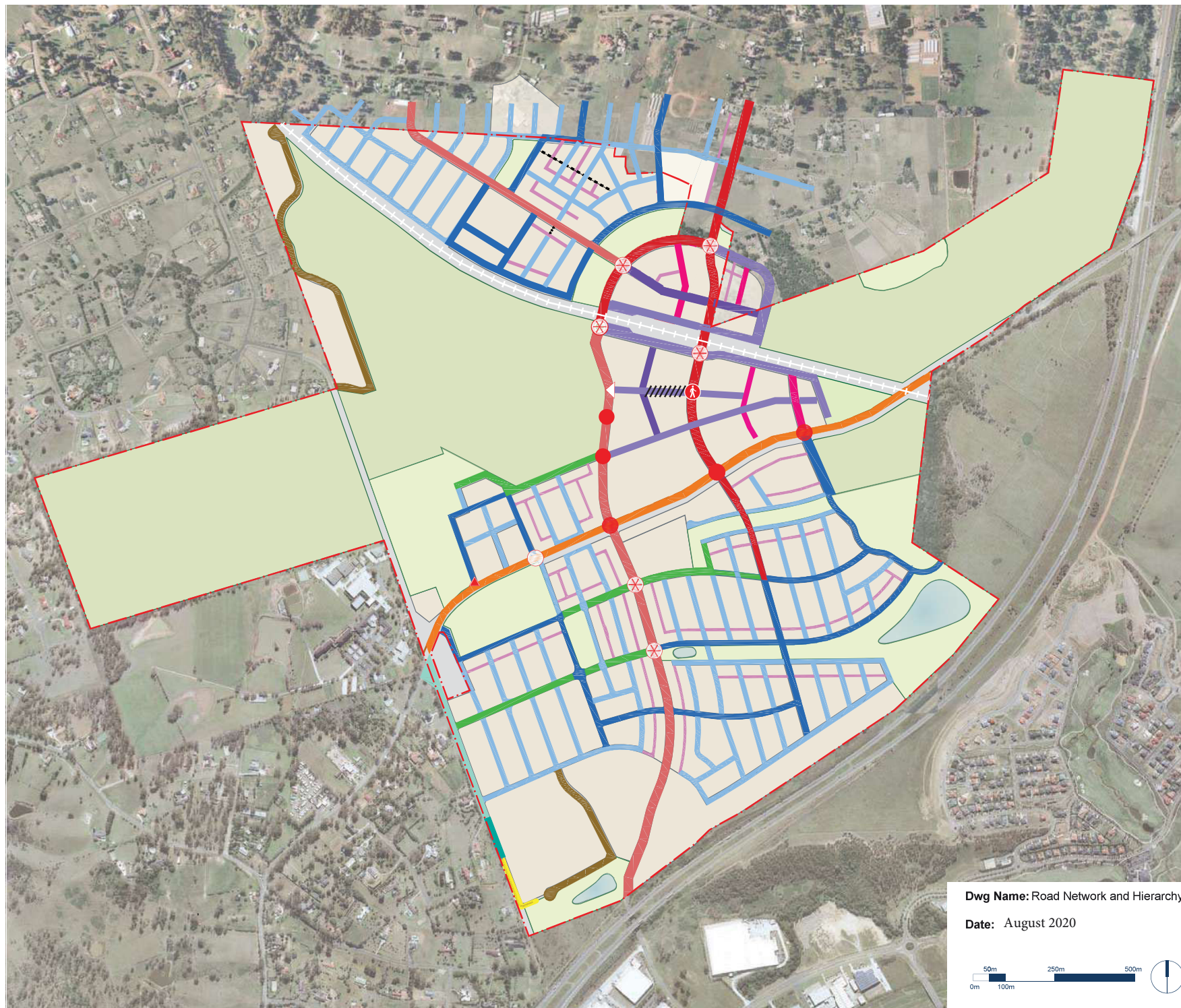


KEY

- Site Boundary
 - Bus Route - Stage 1
 - Bus Route Long Term
 - Bus Route Medium Term
 - Train Station
- Cycleways/Pedestrian Paths
- Rail Trail
 - Dedicated On-Road Regional Paths
 - Street Based District Paths
 - Regional Bushland Trails

Dwg Name: Pedestrian, Cycle and Public Transport Network
Date: August 2020



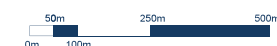


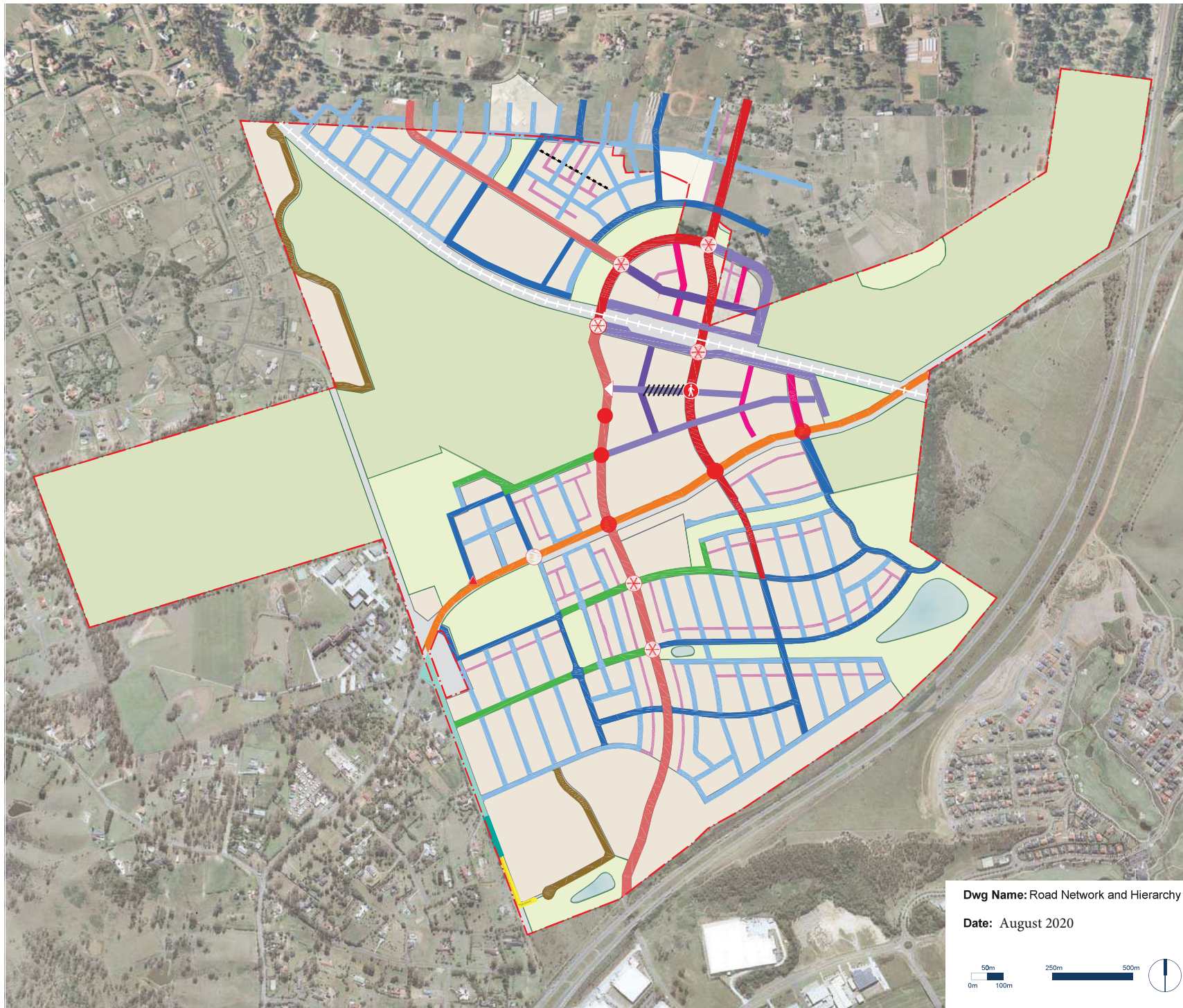
KEY

- Site Boundary
- Croatia / Macdonald Road
- Driveway
- Fire Trail
- Local Major
- Local Minor (Indicative Only)
- Open Space
- Rural Road
- Service Lane (Indicative Only)
- Sub Arterial Road (Campbelltown Road)
- Town Centre Main Street
- Town Centre Secondary (east-west)
- Town Centre Secondary (north-south)
- Transit Boulevard
- Zouch Collector
- △ Left In / Left Out Only
- Traffic Signals (All Movements)
- Traffic Signals (Right Turn Banned)
- Traffic Signals (Left In / Left Out Only)
- ⊗ Other Potential Traffic Signals
- Roundabout
- ⤴ Pedestrian Signal
- //// Pedestrianized

Dwg Name: Road Network and Hierarchy (for 2ha school site)

Date: August 2020





KEY

- Site Boundary
- Croatia / Macdonald Road
- Driveway
- Fire Trail
- Local Major
- Local Minor (Indicative Only)
- Open Space
- Rural Road
- Service Lane (Indicative Only)
- Sub Arterial Road (Campbelltown Road)
- Town Centre Main Street
- Town Centre Secondary (east-west)
- Town Centre Secondary (north-south)
- Transit Boulevard
- Zouch Collector
- Left In / Left Out Only
- Traffic Signals (All Movements)
- Traffic Signals (Right Turn Banned)
- Traffic Signals (Left In / Left Out Only)
- Other Potential Traffic Signals
- Roundabout
- Pedestrian Signal
- Pedestrianized

Dwg Name: Road Network and Hierarchy (for 6ha school site)

Date: August 2020





KEY

- Site Boundary
- Edmondson Park Precinct
- Proposed Regional Park
- Proposed Public Open Space
- Proposed Public Open Space for Conservation
- EPBC Listed
- Additional CPW - Rehabilitation and Restoration

Dwg Name: Open Space Network

Date: August 2020



Liverpool Local Government Area
Schedule of Open Space Facilities

- 1. Local Park
 - Tree planting and landscaping
 - Bollard lighting
 - 3m recreational path
 - Perimeter fencing / barriers
- 2. Maxwell Creek North Riparian Corridor
 - Tree planting and landscaping
 - Bollard lighting
 - 3m recreational path
 - Perimeter fencing / barriers Civic park / playground / skate park facilities
- 3. Regional Park
 - Rehabilitate natural bushland
- 4. District Park
 - Retain parade ground
 - 3 x International soccer fields
 - 1 x International rugby league field
 - Synthetic cricket pitch
 - Floodlighting to 100 lux
 - Male and female toilets
 - Amenities building and change rooms
 - Canteen
 - Boardwalks / viewing platforms
 - Picnic and barbecue facilities
 - Children's playground (2-5 year-olds)
 - Sealed car park (40 cars)
 - Perimeter fencing / barriers

Campelltown Local Government Area
Schedule of Open Space Facilities

- 5. Mont St Quentin Oval
 - AFL field
 - Synthetic cricket pitch
 - Amenities building and change rooms
 - Canteen
 - Children's playground (2-5 year-olds)
 - Sealed car park (20 cars)
 - Picket fence
 - Informal recreation
 - Perimeter fencing / bollards
- 6. Local Park Stage 1
 - Large adventure playground
 - Fitness circuit
 - Picnic and barbecue facilities
 - Interpretive plaques and sculptures
 - Tree planting and landscaping
 - Bins and water refill
 - General and bollard lighting
- 7. Local Park Adjacent School
 - Children's playground (2-5 year-olds)
 - Perimeter fencing / barriers
 - Tree planting and landscaping
- 8. Northern Riparian Corridor
 - Perimeter fencing / barriers
- 9. Maxwell Creek South Oval
 - 2 x International rugby league fields
 - Synthetic cricket pitch
 - Floodlighting to 100 lux
 - Male and female toilets
 - Amenities building and change rooms
 - Canteen
 - Boardwalks / viewing platforms
 - Picnic and barbecue facilities
 - Children's playground (2-5 year-olds)
 - Sealed car park (20 cars)
 - Perimeter fencing / barriers
- 10. Maxwell Creek South Water Quality Facility
 - Detention basin and bioretention systems
 - General and bollard lighting
 - Picnic and barbecue facilities
 - Tree planting and landscaping
 - Perimeter fencing / barriers
- 11. Southern Riparian Corridor
 - Tree planting and landscaping
 - Bollard lighting
 - 3m recreational path
 - Perimeter fencing / barriers
- 12. Local Park
 - Bioretention systems
 - Tree planting and landscaping
 - Bollard lighting
 - 3m recreational path
 - Perimeter fencing / barriers

Legend

Existing

- Conservation areas
- Canopy vegetation
- Creek lines

Proposed

- Public open space
- Large / small street tree
- Open space trees
- Riparian vegetation

- Ornamental ponds
- Amenities building
- Playgrounds
- Car parks
- Shared user paths / footpaths
- Boardwalks
- Footpaths / trails / bridges in conservation areas
- Primary cycleway connections



KEY

- Site Boundary
- 10m APZ
- 15m APZ
- 40m APZ
- 50m APZ

Dwg Name: Bushfire Asset Protection Zones

Date: August 2020

