

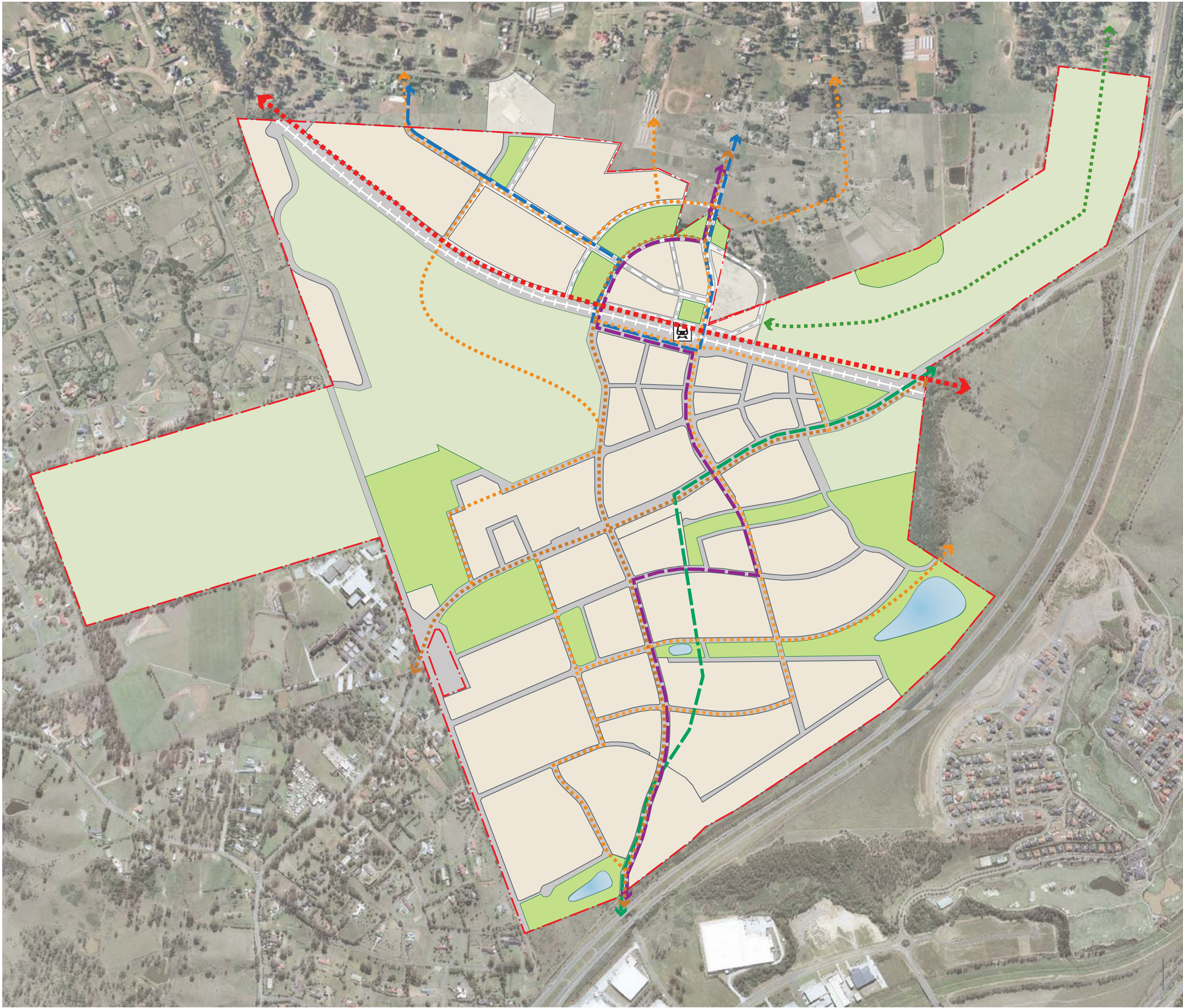
**KEY**

- Site Boundary
- L.G.A. Boundary
- General Residential
- Environmental Living
- Mixed Use Town Centre
- Public Open Space
- Regional Park
- Heritage Precinct
- Substation
- TCA Rail Corridor
- Train Station
- Schools
- Pedestrian Link over TCA Corridor
- Ornamental Pond
- OSD Basin
- Sewer Line
- Road Links
- Former School Site
- General Residential/Schools










**Dwg Name:** Concept Plan (Mod 2)  
**Date:** June 2018







**KEY**

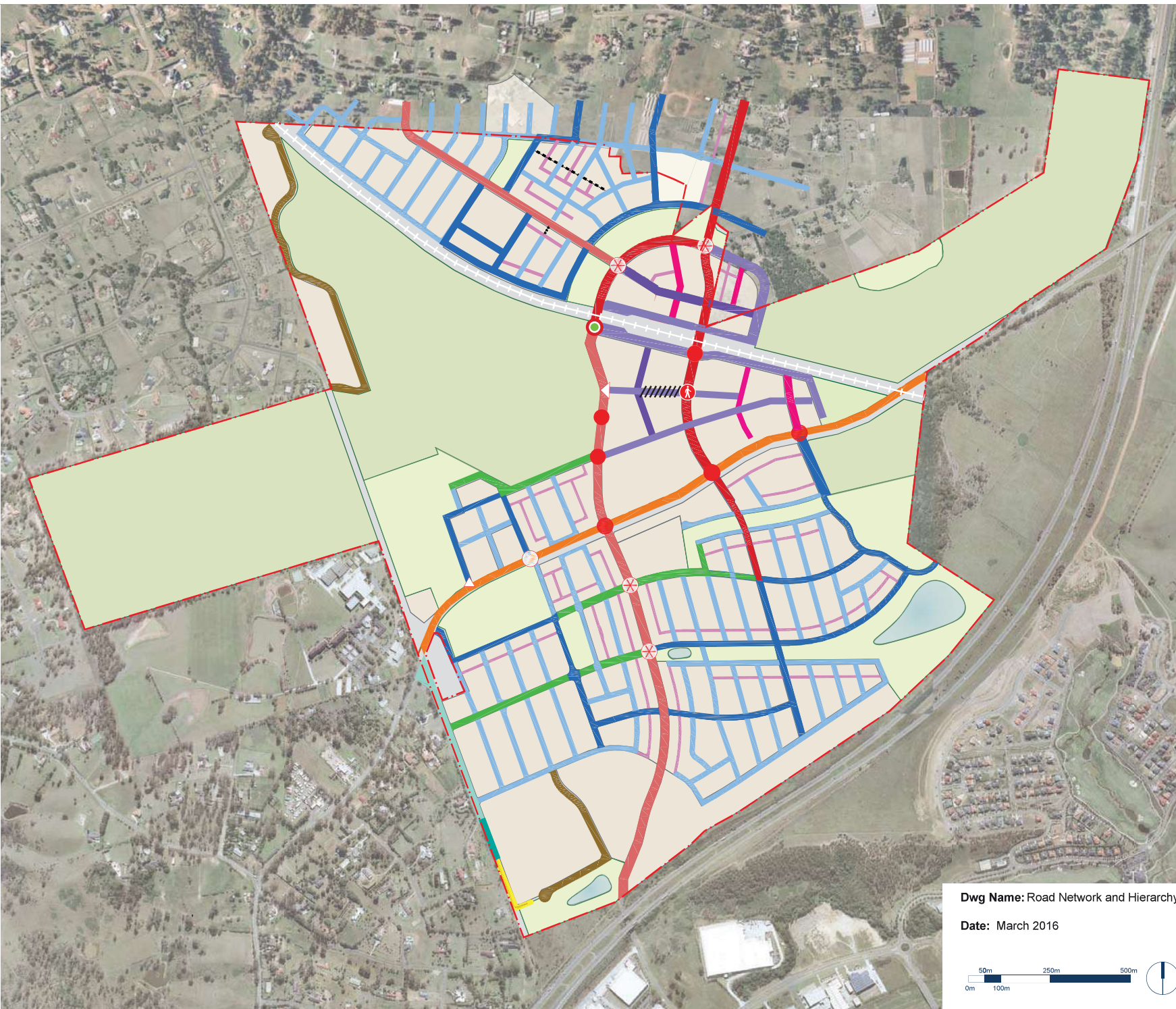
-  Site Boundary
-  Bus Route - Stage 1
-  Bus Route Long Term
-  Bus Route Medium Term
-  Train Station
- Cycleways/Pedestrian Paths**
-  Rail Trail
-  Dedicated On-Road Regional Paths
-  Street Based District Paths
-  Regional Bushland Trails

**Dwg Name:** Pedestrian, Cycle and Public Transport Network

**Date:** July 2018







# KEY

- Site Boundary
- Croatia / Macdonald Road
- Driveway
- Fire Trail
- Local Major
- Local Minor (Indicative Only)
- Open Space
- Rural Road
- Service Lane (Indicative Only)
- Sub Arterial Road (Campbelltown Road)
- Town Centre Main Street
- Town Centre Secondary (east-west)
- Town Centre Secondary (north-south)
- Transit Boulevard
- Zouch Collector
- △ Left In / Left Out Only
- Traffic Signals (All Movements)
- Traffic Signals (Right Turn Banned)
- Traffic Signals (Left In / Left Out Only)
- ⊗ Other Potential Traffic Signals
- Roundabout
- ⤴ Pedestrian Signal
- //// Pedestrianized

**Dwg Name:** Road Network and Hierarchy

**Date:** March 2016







# KEY

- Site Boundary
- Edmondson Park Precinct
- Proposed Regional Park
- Proposed Public Open Space
- Proposed Public Open Space for Conservation
- EPBC Listed
- Additional CPW - Rehabilitation and Restoration

Dwg Name: Open Space Network

Date July 2018





Liverpool Local Government Area  
Schedule of Open Space Facilities

1. Local Park
  - Tree planting and landscaping
  - Bollard lighting
  - 3m recreational path
  - Perimeter fencing / barriers
2. Maxwell Creek North Riparian Corridor
  - Tree planting and landscaping
  - Bollard lighting
  - 3m recreational path
  - Perimeter fencing / barriers Civic park / playground / skate park facilities
3. Regional Park
  - Rehabilitate natural bushland
4. District Park
  - Retain parade ground
  - 3 x International soccer fields
  - 1 x International rugby league field
  - Synthetic cricket pitch
  - Floodlighting to 100 lux
  - Male and female toilets
  - Amenities building and change rooms
  - Canteen
  - Boardwalks / viewing platforms
  - Picnic and barbeque facilities
  - Children's playground (2-5 year-olds)
  - Sealed car park (40 cars)
  - Perimeter fencing / barriers

Campelltown Local Government Area  
Schedule of Open Space Facilities

5. Mont St Quentin Oval
  - AFL field
  - Synthetic cricket pitch
  - Amenities building and change rooms
  - Canteen
  - Children's playground (2-5 year-olds)
  - Sealed car park (20 cars)
  - Picket fence
  - Informal recreation
  - Perimeter fencing / bollards
6. Local Park Stage 1
  - Large adventure playground
  - Fitness circuit
  - Picnic and barbeque facilities
  - Interpretive plaques and sculptures
  - Tree planting and landscaping
  - Bins and water refill
  - General and bollard lighting
7. Local Park Adjacent School
  - Children's playground (2-5 year-olds)
  - Perimeter fencing / barriers
  - Tree planting and landscaping
8. Northern Riparian Corridor
  - Perimeter fencing / barriers
9. Maxwell Creek South Oval
  - 2 x International rugby league fields
  - Synthetic cricket pitch
  - Floodlighting to 100 lux
  - Male and female toilets
  - Amenities building and change rooms
  - Canteen
  - Boardwalks / viewing platforms
  - Picnic and barbeque facilities
  - Children's playground (2-5 year-olds)
  - Sealed car park (20 cars)
  - Perimeter fencing / barriers
10. Maxwell Creek South Water Quality Facility
  - Detention basin and bioretention systems
  - General and bollard lighting
  - Picnic and barbeque facilities
  - Tree planting and landscaping
  - Perimeter fencing / barriers
11. Southern Riparian Corridor
  - Tree planting and landscaping
  - Bollard lighting
  - 3m recreational path
  - Perimeter fencing / barriers
12. Local Park
  - Bioretention systems
  - Tree planting and landscaping
  - Bollard lighting
  - 3m recreational path
  - Perimeter fencing / barriers

Legend

- Existing**

  - Conservation areas
  - Canopy vegetation
  - Creek lines
- Proposed**

  - Public open space
  - Large / small street tree
  - Open space trees
  - Riparian vegetation
- Ornamental ponds
  - Amenities building
  - Playgrounds
  - Car parks
  - Shared user paths / footpaths
  - Boardwalks
  - Footpaths / trails / bridges in conservation areas
  - Primary cycleway connections



Client  
Landcom

Project  
Edmondson Park South

Drawing  
Landscape Concept Plan

Drawing No

Project No  
AX002910

Date  
July 2018

Scale  
1 : 10 000 @ A3

Drawn By



**KEY**

- Site Boundary
- 10m APZ
- 15m APZ
- 40m APZ
- 50m APZ

**Dwg Name:** Bushfire Asset Protection Zones

**Date:** June 2018

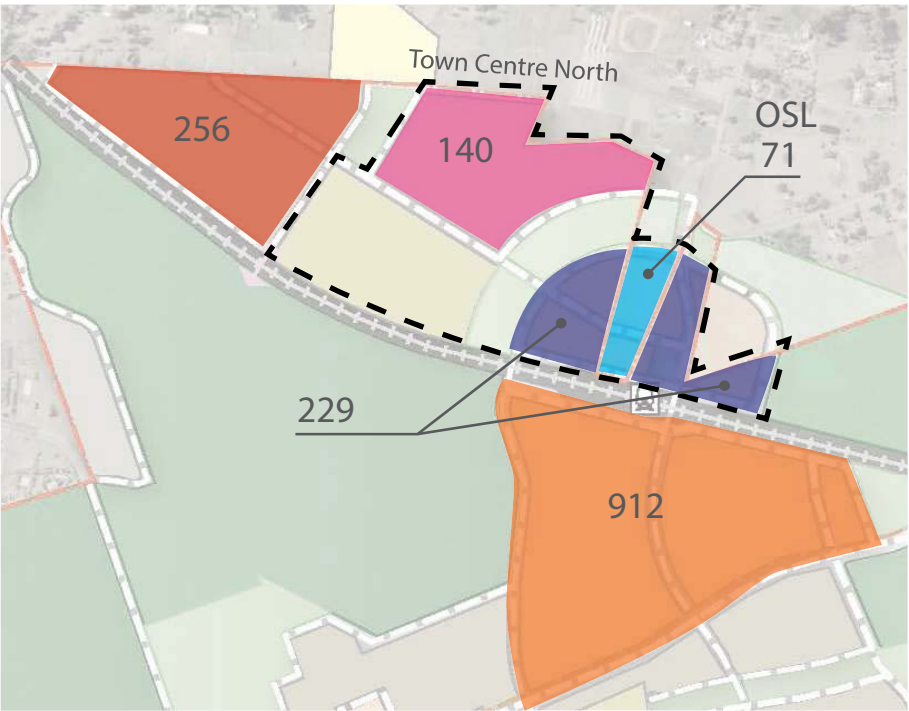




# PROPOSED PLANNING AMENDMENTS

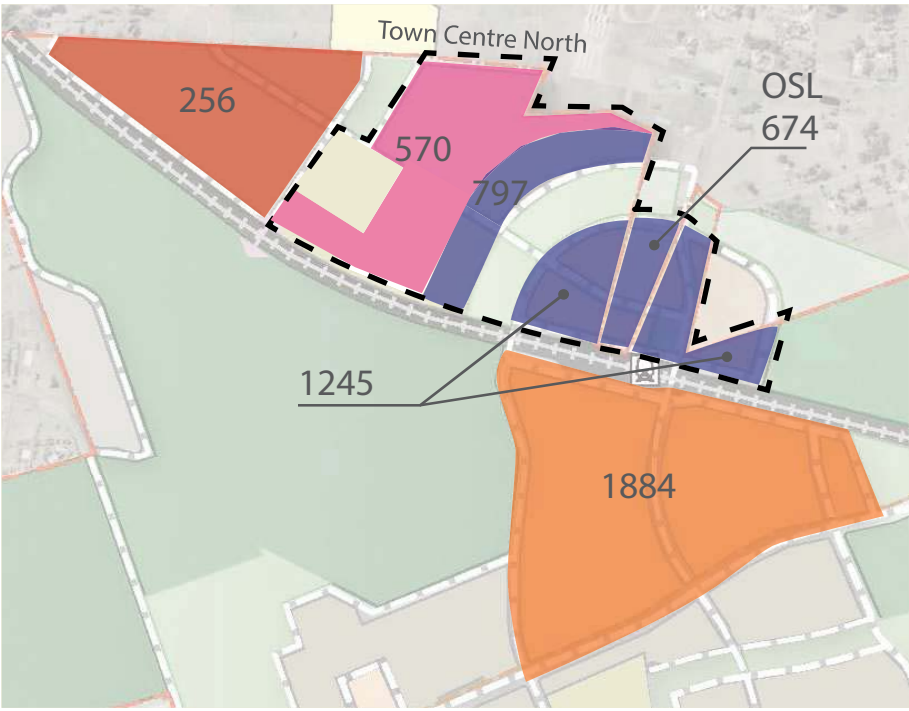
## Edmondson Park Concept Plan (MP10\_0118) - Yields Assessment

CONCEPT PLAN (2010)



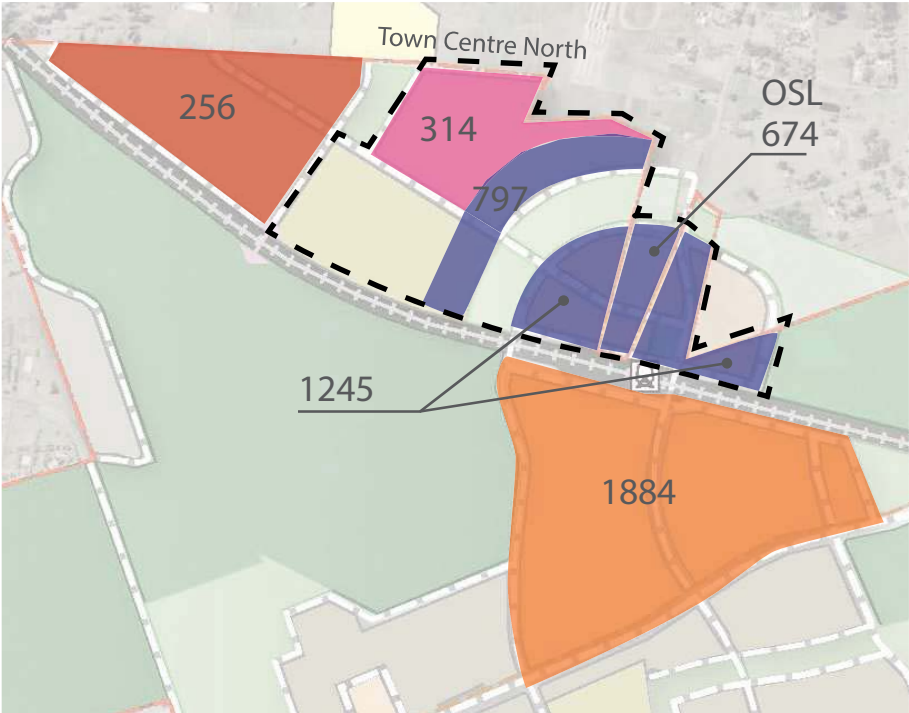
BEFORE

2HA SCHOOL SCENARIO



AFTER

6HA SCHOOL SCENARIO



AFTER