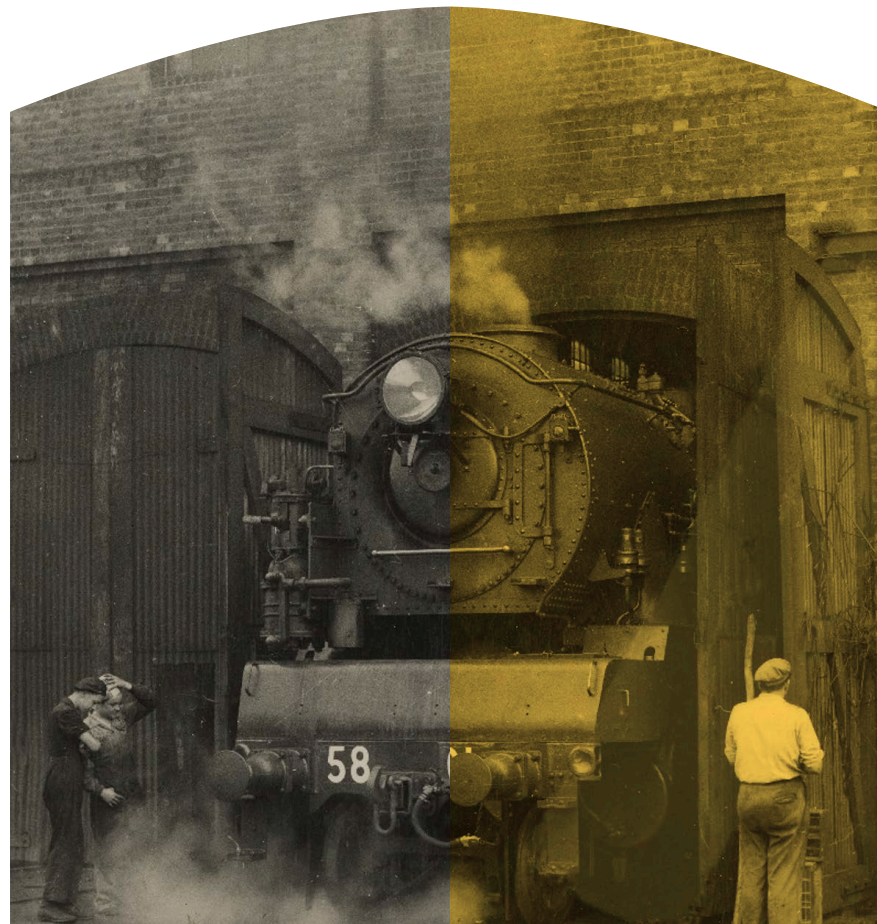


Large Erecting Shop South Eveleigh

Draft Preliminary Moveable
Heritage Register

curio
PROJECTS






This Draft Preliminary Moveable Heritage Register has been prepared by Curio Projects and provides a photographic schedule of the elements found within each internal side of the building.

Further investigation on their integrity and condition and proposed management by Transport Heritage NSW will be undertaken by an experienced and qualified heritage consultant to confirm their suitability for display and exhibition within the building and this detail will form part of a more detailed Final Moveable Heritage Register (in consultation with Transport Heritage NSW, the current owners of the assets) and as part of the Heritage Interpretation Plan and Strategy developed for the Stage 2 Development Application. The final Movable Heritage Register will be a comprehensive catalogue of all the moveable heritage items across the LES, and outline details for their conservation and long-term storage and use as part of the Heritage Interpretation Plan and Strategy, and detailed development planning for the site.

LES Moveable Heritage Management Plan

A Movable Heritage Management Plan for the Large Erecting Shop is being prepared by Curio Projects. The purpose of the plan is to provide a framework for the identification and care for movable heritage objects and collections in their context.

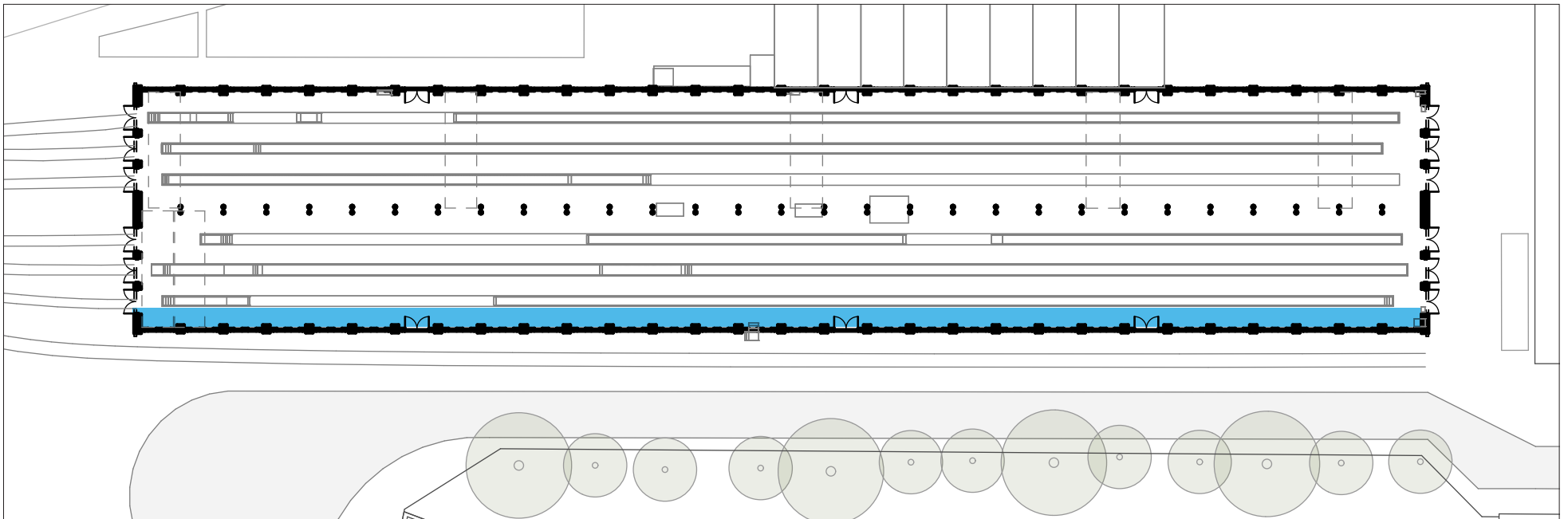
The process to develop the MHMP is as follows:

REZONING  Identify Possible Moveable Heritage (the 'collection')	Preliminary Site Visit to establish broad parameters of the remaining collection currently on site	Preliminary Baseline Photographic Recording of Collection 'as is' insitu	Commence stakeholder engagement to establish ownership of remnant moveable fabric- TAHE, Transport Heritage NSW or private	Preliminary identification (photographic only) of individual items already known to require insitu retention and identification of existing 'groups' of items needing further consideration & review as part of Stage 2 works (i.e. all remnant groupings of historic moveable heritage items remaining on site).	Preparation of a drawing (plan) with an overlay, highlighting the current locations of individual insitu moveable heritage items already identified as requiring retention on site for future interpretation (*not necessarily in the current locations TBA) and/or groups of items that will require further review as part of Stage 2.	
	COMPLETE	COMPLETE	IN PROGRESS	COMPLETE	COMPLETE	
PRIOR TO LODGEMENT OF THE SSDA  Research & Prepare draft S170 Register for the Moveable Heritage Collection	Detailed audit of all remnant items including research, where necessary to further understand, identify and establish significance of remaining moveable heritage items on site.	Detailed documentation of provenance, physical context, associations and ownership of moveable heritage items identified as meeting the threshold for significance at a local or State level.	Assess and document condition and integrity of each item proposed to be listed on the Section 170 Register.	Identify Moveable Heritage Items (in plan form) required to be retained 'insitu' to retain significance.	Detailed cataloguing of items for a draft Section 170 Movable Heritage Register, including photography of each individual item identified as having significance.	Prepare Draft Moveable Heritage Collection Management Plan & circulate for stakeholder comment (including TAHE, DPE, Transport for Heritage NSW, NSW Heritage Office, interested community groups)
	IN PROGRESS	NOT YET COMMENCED	NOT YET COMMENCED	IN PROGRESS	NOT YET COMMENCED	NOT YET COMMENCED
POST- SSDA APPROVAL  Finalisation of Moveable Heritage Management Plan	Finalise Moveable Heritage Collection Management Plan following on from stakeholder consultation and with respect to any moveable heritage-specific SSDA conditions of consent.	Finalisation of the Moveable Heritage Collection Management Plan once redevelopment is complete (and Occupation Certified issued) to ensure that the final collections management policies, recommendations and future conservation schedules are commensurate with the approved SSDA requirements and final site conditions.				
	Post-SSDA approval and prior to issuance of Final Occupation Certificate, once the Stage 2 Heritage Interpretation Plan has been approved by DPE.	Post-SSDA, once project is complete and the Final Occupation Certificate has been issued.				

Moveable Heritage

Internal locations

East facade internal



Moveable Heritage

Internal locations

East facade internal



Miscellaneous items

Moveable Heritage

Internal locations

East facade internal



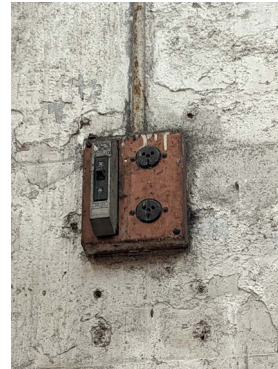
Item:
Pipe and gauges*



Item:
Trolley



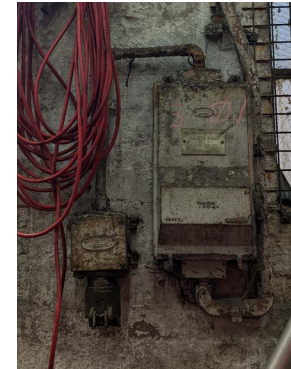
Item:
Switch*



Item:
Switch*



Item:
Pipe and gauges*



Item:
Switches*



Item:
Switch*



Item:
Switch*



Item:
Signage*



Item:
Ladder



Item:
Switch*



Item:
Trolley

* Building fabric

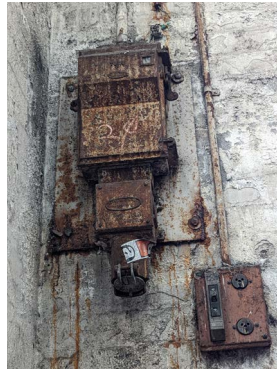
Moveable Heritage

Internal locations

East facade internal



Item:
Train doors



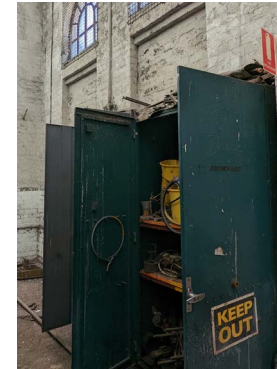
Item:
Switch*



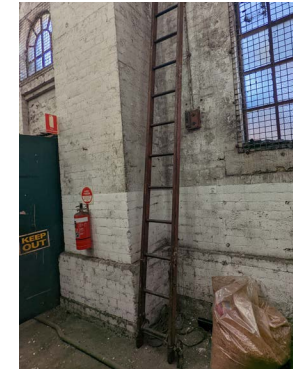
Item:
Switch*



Item:
Timber box and adjacent
loose items



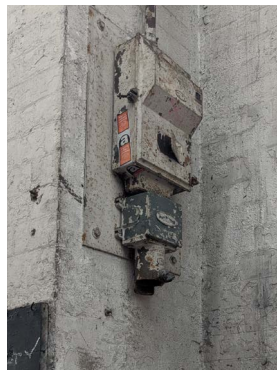
Item:
Cupboard + contents



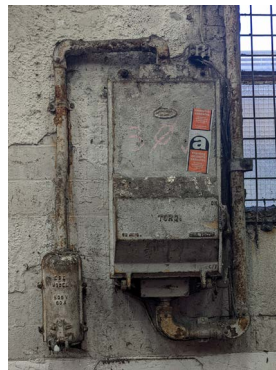
Item:
Ladder



Item:
Switch*



Item:
Switch*



Item:
Switch*



Item:
Fire box*



Item:
Work bench with vices



Item:
Cupboard + content

* Building fabric

Moveable Heritage

Internal locations

East facade internal



Item:
Wooden work bench



Item:
Grey cupboard + contents



Item:
Grey sliding cabinet +
contents



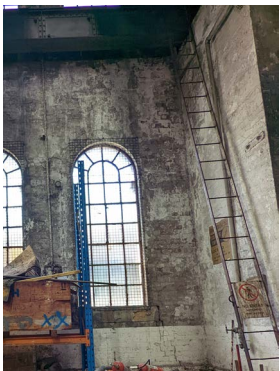
Item:
Cupboard + content



Item:
Pipe and taps/gauges*



Item:
Signage*



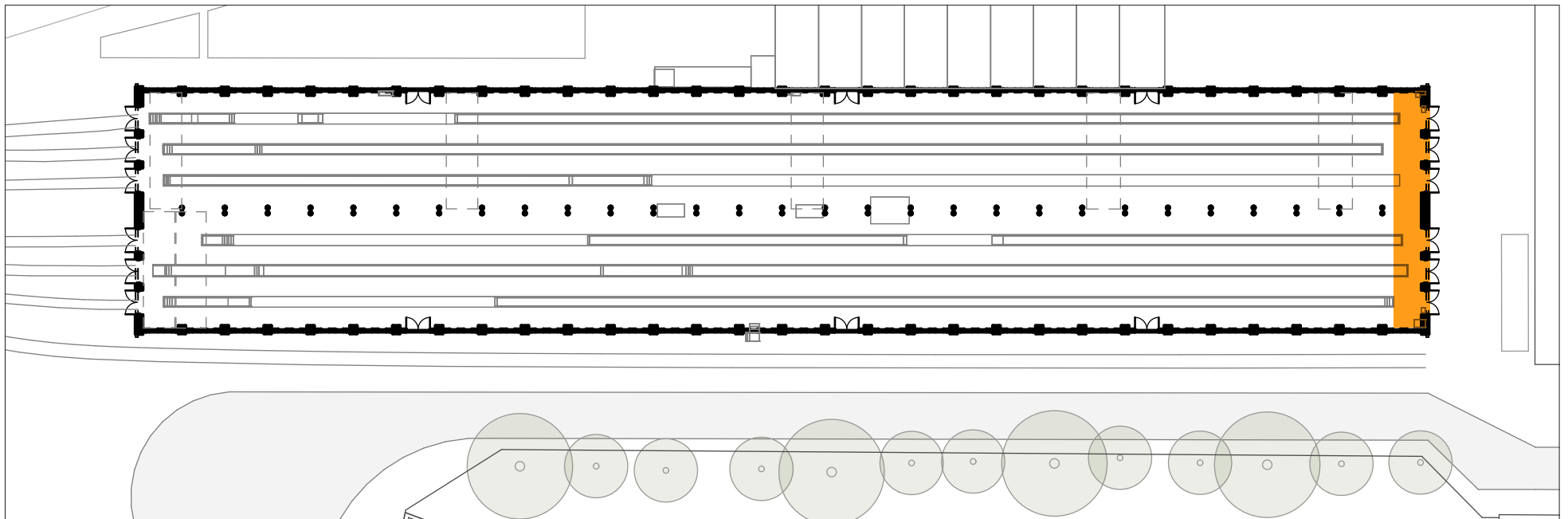
Item:
Ladder

* Building fabric

Moveable Heritage

Internal locations

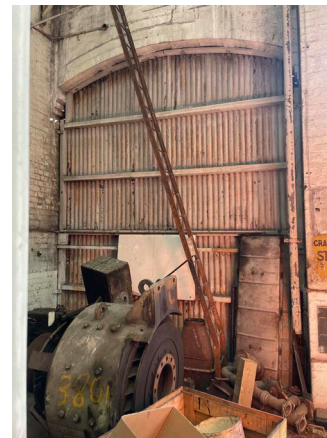
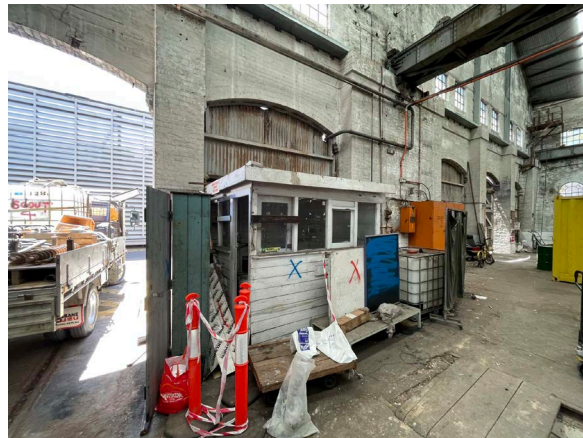
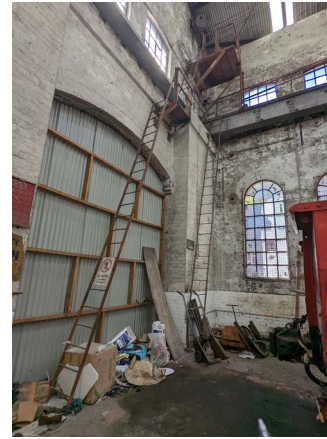
South facade internal



Moveable Heritage

Internal locations

South facade internal

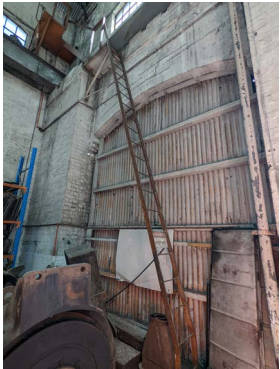


Miscellaneous items

Moveable Heritage

Internal locations

South facade internal



Item:
Ladder



Item:
Signage*



Item:
Train windows



Item:
Cupboard + contents



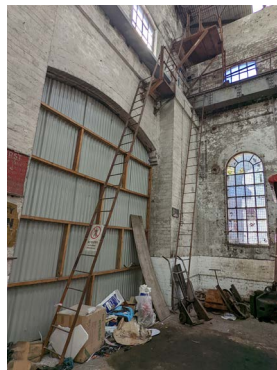
Item:
Sub Foreman Cabin +
contents



Item:
Signage*



Item:
Signage*



Item:
Ladder + platform



Item:
Ladder + platform



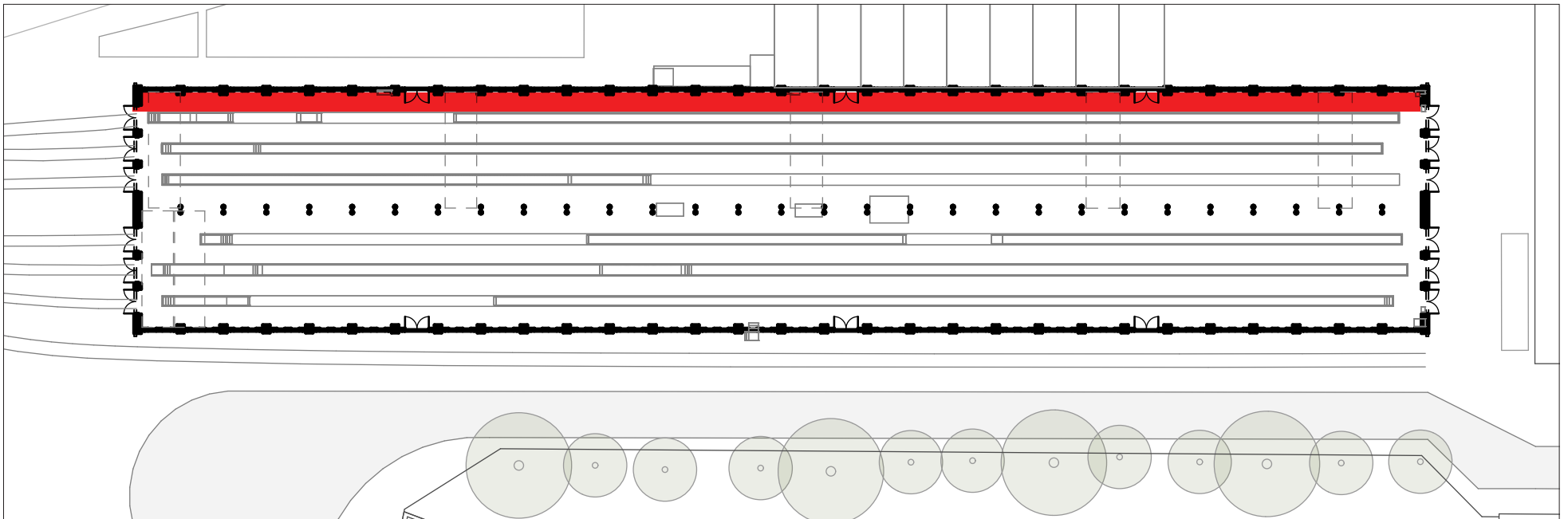
Item:
Large train parts

* Building fabric

Moveable Heritage

Internal locations

West facade internal



Moveable Heritage

Internal locations

West facade internal



Miscellaneous items

Moveable Heritage

Internal locations

West facade internal



Item:
Switches and gauges*



Item:
Switches*



Item:
Ladder



Item:
Red fire box*



Item:
Switch*



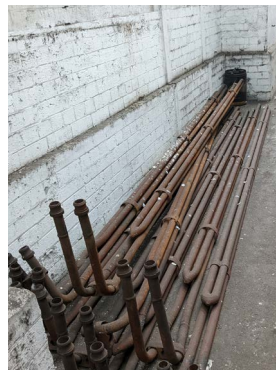
Item:
Switches*



Item:
Crane box



Item:
Pipe and gauges*



Item:
Loose pipes



Item:
Newspaper (tea room)



Item:
Pipe and gauges*



Item:
Switch*

* Building fabric

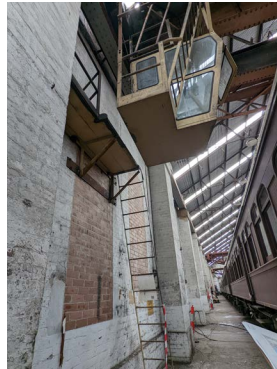
Moveable Heritage

Internal locations

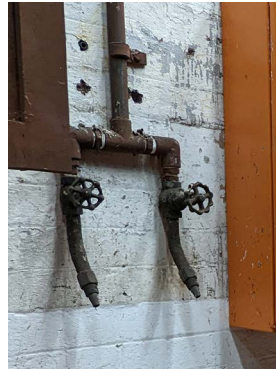
West facade internal



Item:
Cupboard



Item:
Ladder and crane box



Item:
Pipe and gauges*



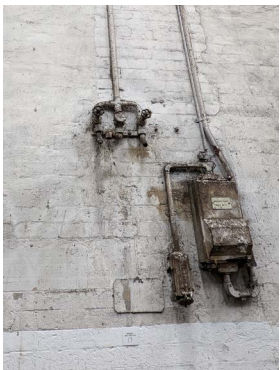
Item:
SignageSwitch box*



Item:
Switch box*



Item:
Switch*



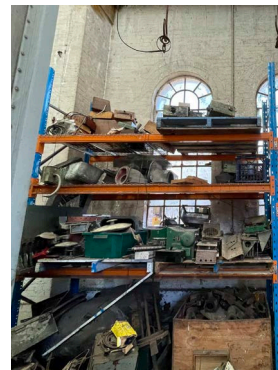
Item:
Switch and gauges*



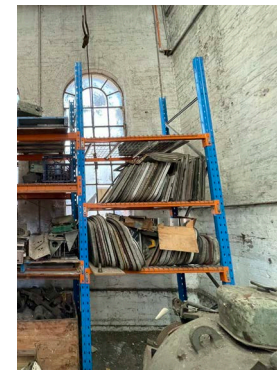
Item:
Red fire box*



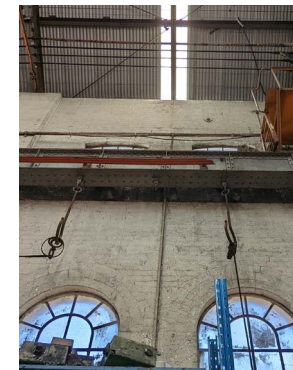
Item:
Switch*



Item:
Loose train parts



Item:
Loose train windows



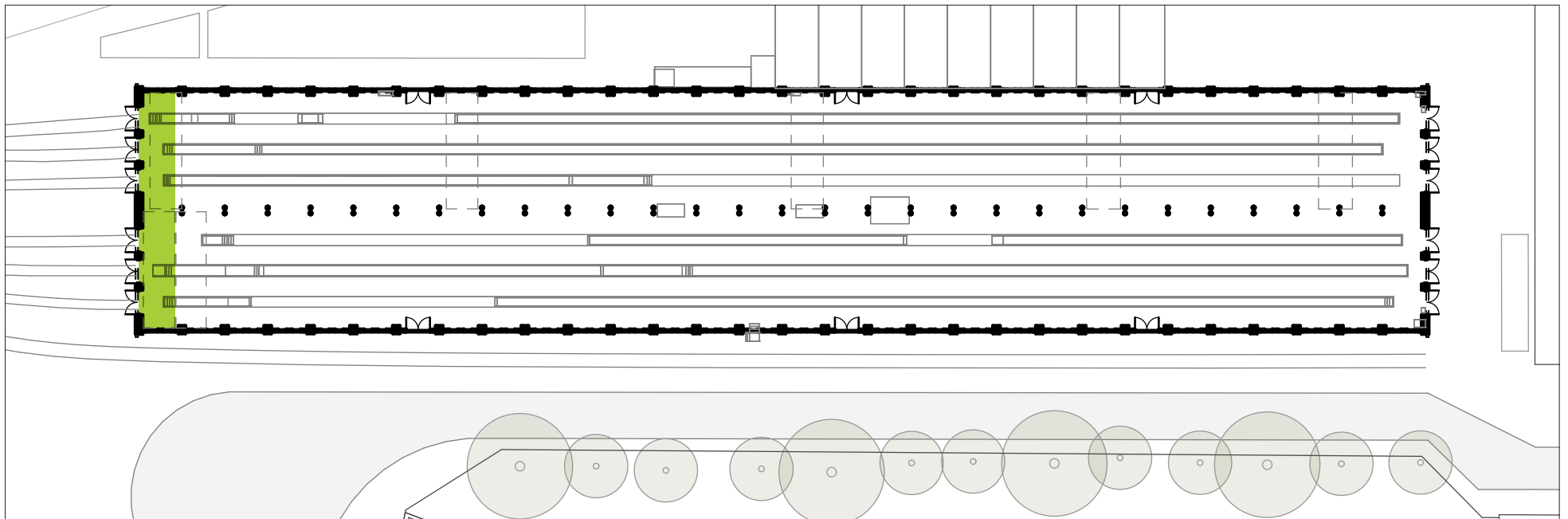
Item:
Hooks

* Building fabric

Moveable Heritage

Internal locations

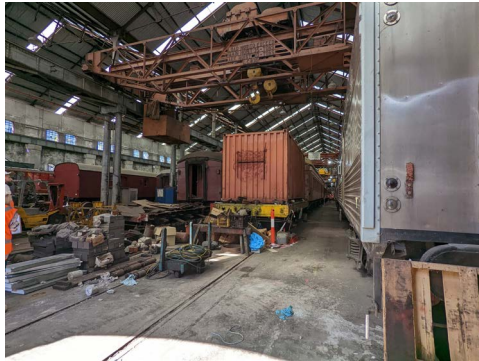
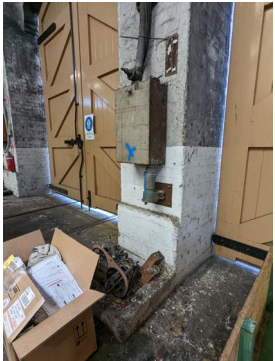
North facade internal



Moveable Heritage

Internal locations

North facade internal



Miscellaneous items



Item:
Switch*



Item:
Table/bench



Item:
Trolley



Item:
Crane and hooks



Item:
Signage*



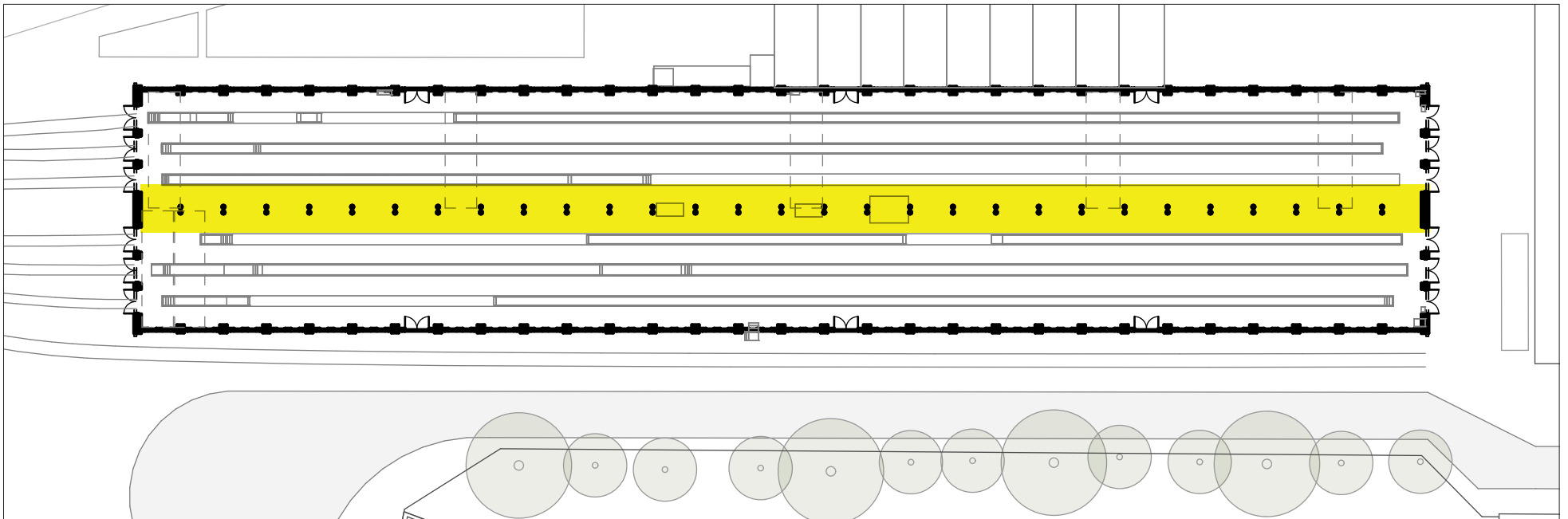
Item:
Ladder

* Building fabric

Moveable Heritage

Internal locations

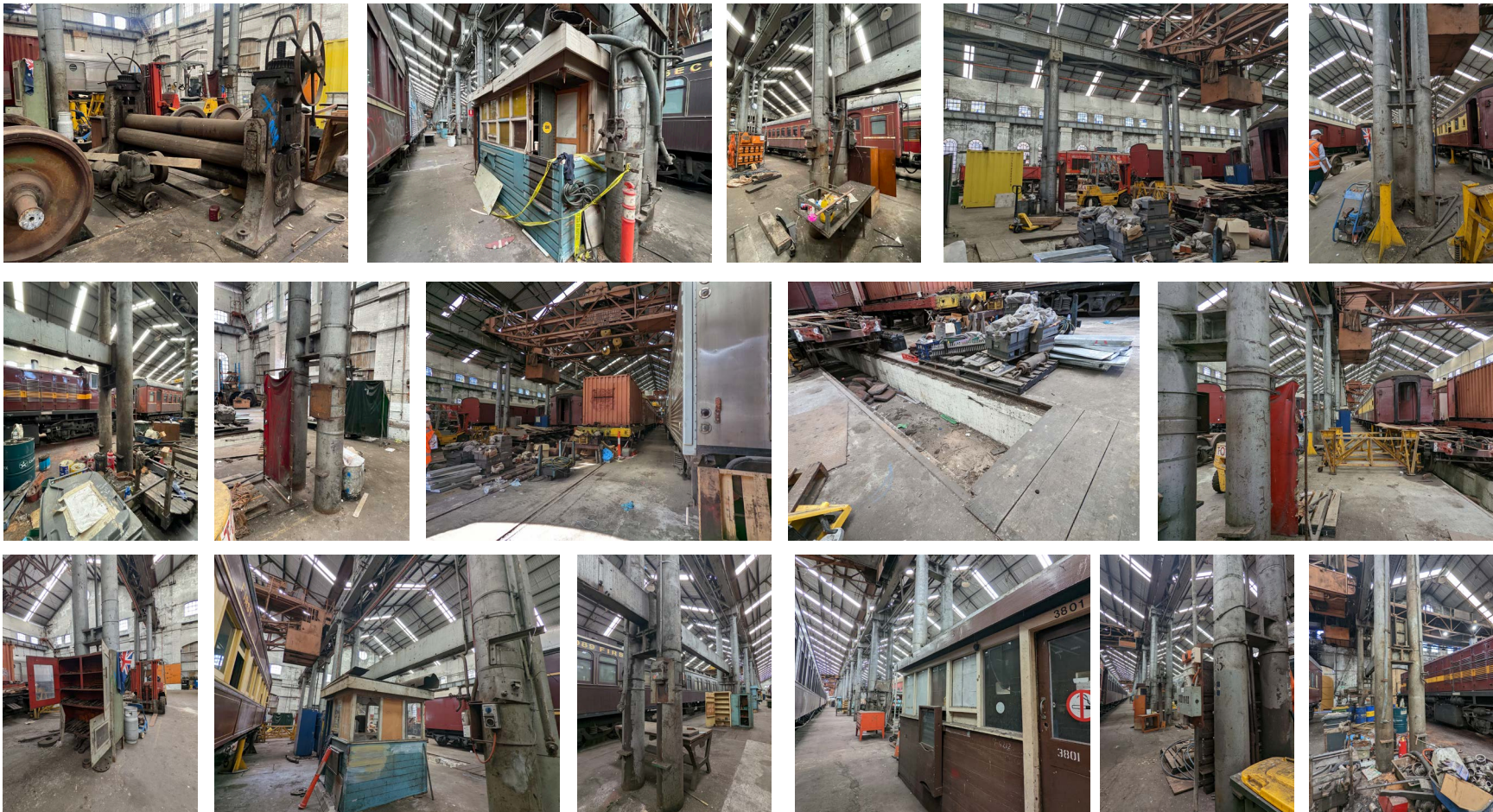
Central spine internal



Moveable Heritage

Internal locations

Central spine internal



Miscellaneous items

Moveable Heritage

Internal locations

Central spine internal



Item:
Gantry cranes



Item:
Cupboard + contents



Item:
Cupboard + contents



Item:
Switch boxes*



Item:
Sub foreman's cabin +
contents



Item:
Switch box*



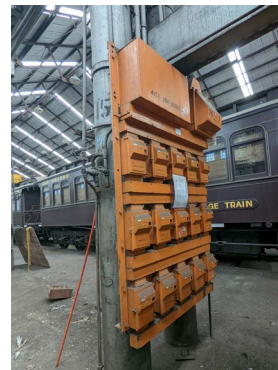
Item:
Switch box*



Item:
Sub foreman's cabin +
contents



Item:
Sub foreman's cabin +
contents



Item:
Switch box*



Item:
Pipes, tap and gauges*



Item:
Sub foreman's cabin +
contents

* Building fabric

Moveable Heritage

Internal locations

Central spine internal



Item:
Cupboards + content



Item:
Table



Item:
Pipe and gauges*



Item:
Machine



Item:
Red drawers



Item:
Sub foreman's cabin +
contents



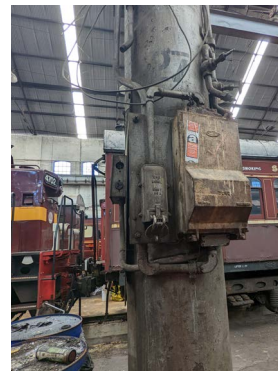
Item:
Pipes, gauges and switch*



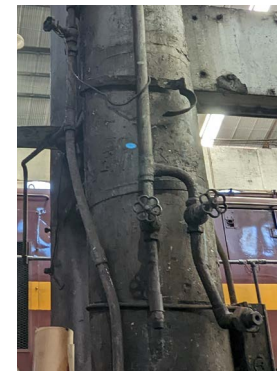
Item:
Pipes and gauges*



Item:
Ladder



Item:
Switch box*



Item:
Pipes and gauges*



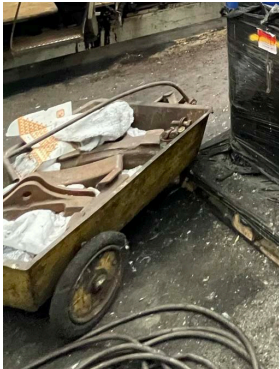
Item:
Trolley + contents

* Building fabric

Moveable Heritage

Internal locations

Central spine internal



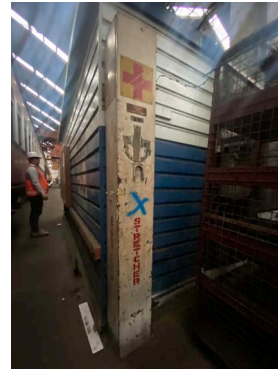
Item:
Trolley



Item:
Switch box*



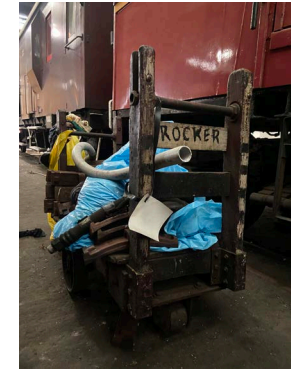
Item:
Train wheels



Item:
Stretcher



Item:
Trolleys



Item:
Wooden trolley



Item:
Large machine

* Building fabric

Moveable Heritage

Internal locations

ITEM	PRINCIPLE
	<i>Subject to further on site investigations, design development and safety</i>
Sub-Foreman Cabins + contents	Retain (location variable)
Gantry Cranes + crane boxes, hooks and signage	Retain (location variable)
Switches, Pipes, Taps, Gauges	Retain (must remain insitu where possible)
Trolleys	Retain (location variable)
Large machines ie. rollers, press machine	Retain (location variable)
Cupboards, draws, filing cabinets, tables, benches + contents	Retain (location variable)
Signage	Retain (must remain insitu where possible)
Ladders and platforms	Retain (must remain insitu where possible)
Fire boxes	Retain (must remain insitu where possible)
Small train parts ie. windows, doors, misc	Retain (location variable)
Large train parts ie. train wheels/axle, misc	Retain (location variable)
Loose items misc ie. parts, paperwork, tools	Retain (location variable)



5 Blackfriars Street, Chippendale NSW 2008
02 8014 9800 | curioprojects.com.au