

Snowy Mountains Special Activation Precinct



Summary of Delivery Documents

Jindabyne Development Control Plan

Applies to	Consent Authority
Land in Jindabyne (including Growth Precinct)	Snowy Monaro Regional Council

The Jindabyne DCP includes general planning considerations for the Jindabyne locality as well as specific objectives and controls for the Growth sub-precincts of:

- Jindabyne Town Centre Growth
- Jindabyne West
- East Jindabyne
- Jindabyne South
- Leesville
- Jindabyne Aerodrome
- Barry Way South

Controls are detailed provisions that set out requirements for achieving the stated objectives. Proposals are required to comply with the relevant objectives and controls applicable to the sites.

Snowy Mountains Delivery Plan

Applies to	Consent Authority
Catalyst Precinct	CIV < \$2million: Snowy Monaro Regional Council CIV >\$2million: Department of Planning and Environment

A Delivery Plan is a statutory document, referenced by the Precincts – Regional SEPP and is required before any development can occur within a Special Activation Precinct. The Snowy Mountains Delivery Plan includes guiding principles and general provisions which apply the Catalyst Precinct. Design objectives, desired future character, prescribed outcomes, and performance criteria are included for development within the sub-precincts of:

- Town Centre and Foreshore
- Sports and Education
- Mountain Bike and Adventure Park
- Western Lake Jindabyne

Alpine Development Control Plan

Applies to	Consent Authority
Land in the Alpine Precinct, within Kosciuszko National Park (KNP)	Department of Planning and Environment.

The DCP supports the statutory planning framework of the Alpine Region including Chapter 4 Precincts-Regional SEPP and the Snowy Mountains Special Activation Precincts Master Plan. The key elements of the DCP are listed below.

- Provides detailed provisions to guide development to achieve the aims and objectives of Chapter 4 Precincts-Regional SEPP.
- Includes detailed objectives and controls for ensuring well-designed, quality land use and development.
- Includes provisions that respond to the carrying capacity (CCF) to facilitate a safe and sustainable increase in the amount and range of year-round recreation and accommodation offerings.
- Each new development application will be assessed having regard to the DCP

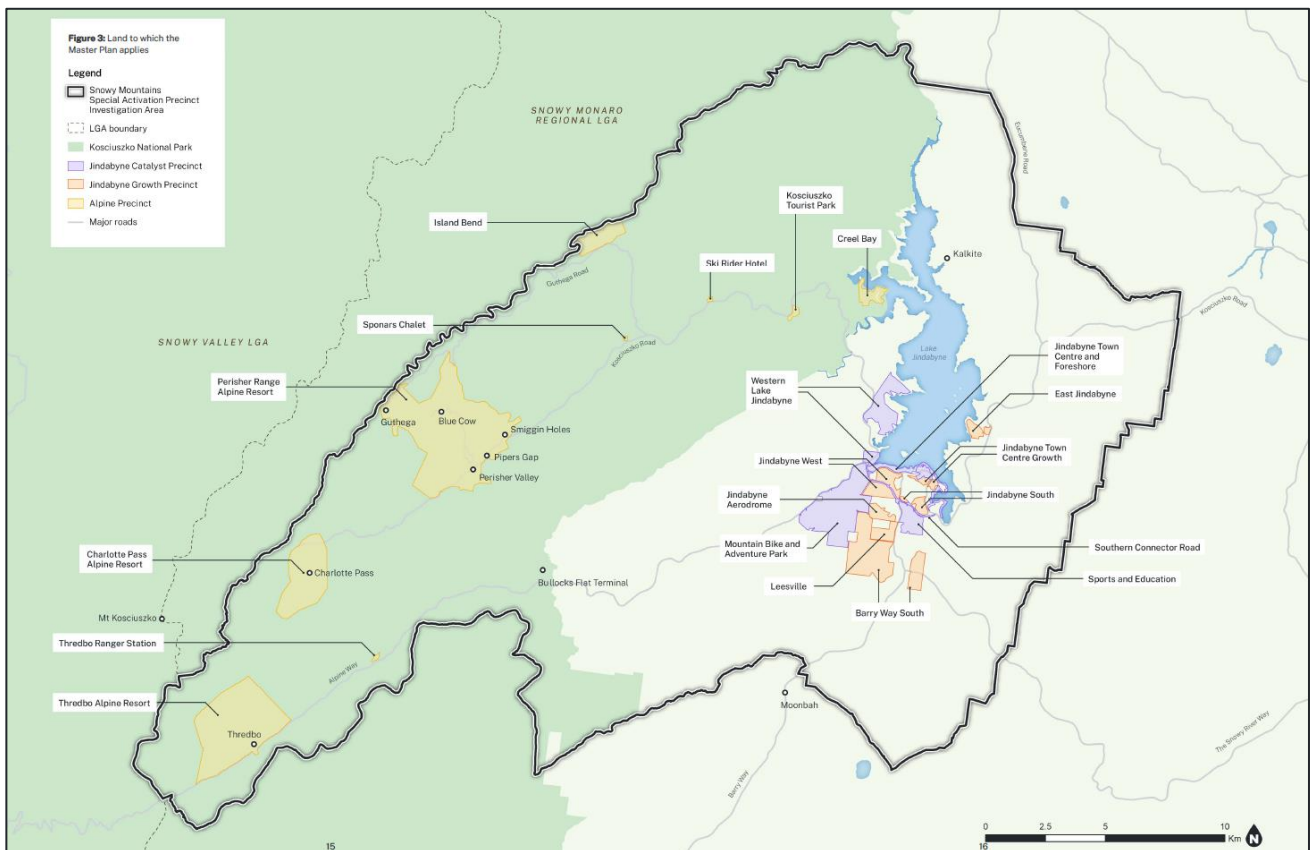


Figure 1 Snowy Mountains Precinct