

casuarina specialist centre

10 grand parade, casuarina



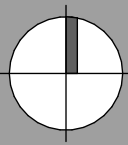
K	31/07/24	RFI response
J	05/03/24	issue for approval
I	27/02/24	issue for approval
H	23/02/24	issue for approval
G	22/02/24	coordination issue
issue	date	revision

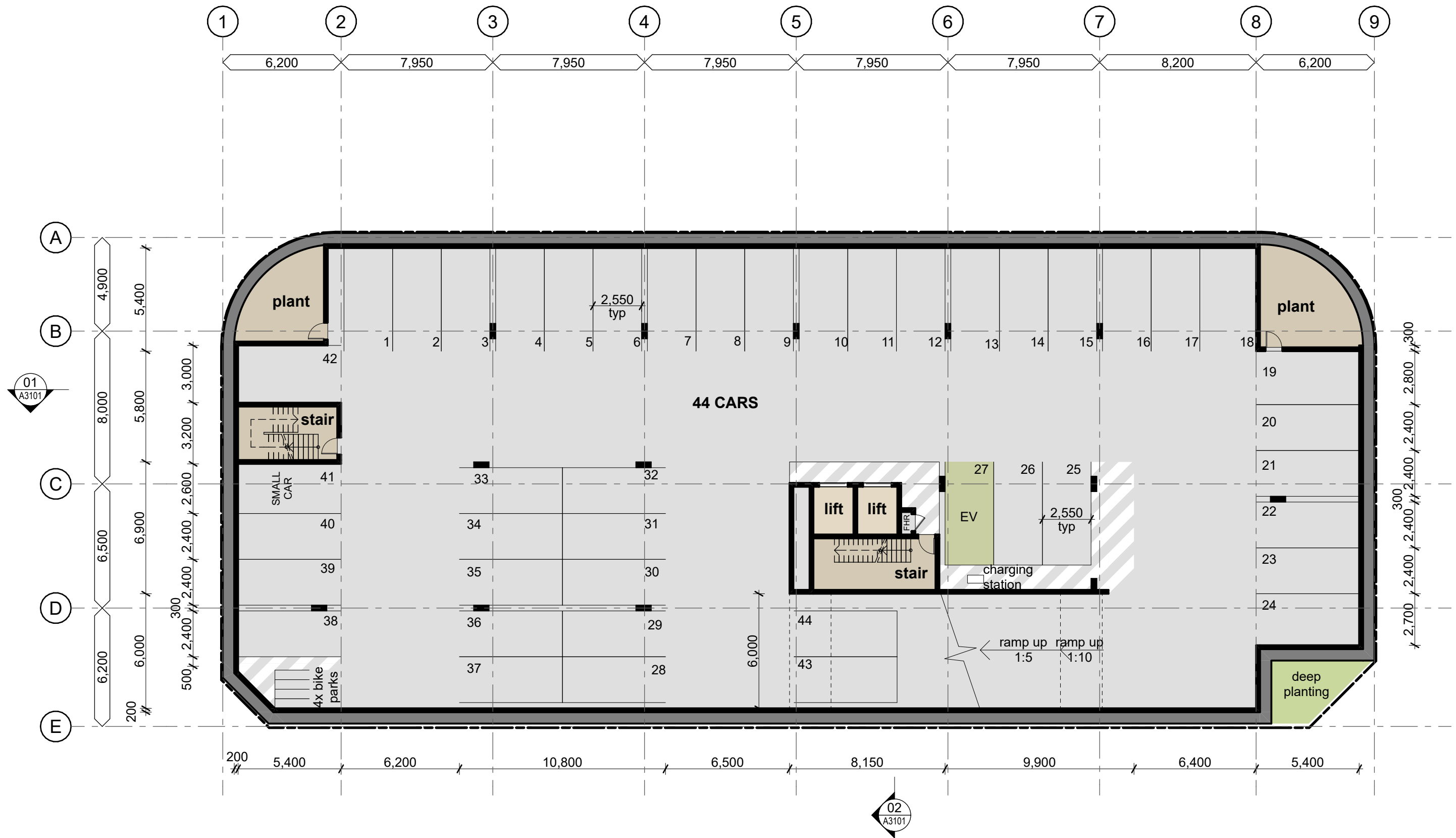


- legend**
- refer to MP06_0258-Mod-10
 - mixed use
 - 3 and partial 4 storey

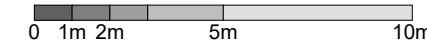
01 concept plan
SCALE 1:2000

K	31/07/24	RFI response
J	05/03/24	issue for approval
I	27/02/24	issue for approval
H	23/02/24	issue for approval
G	22/02/24	coordination issue
issue	date	revision

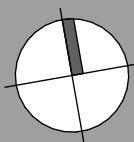


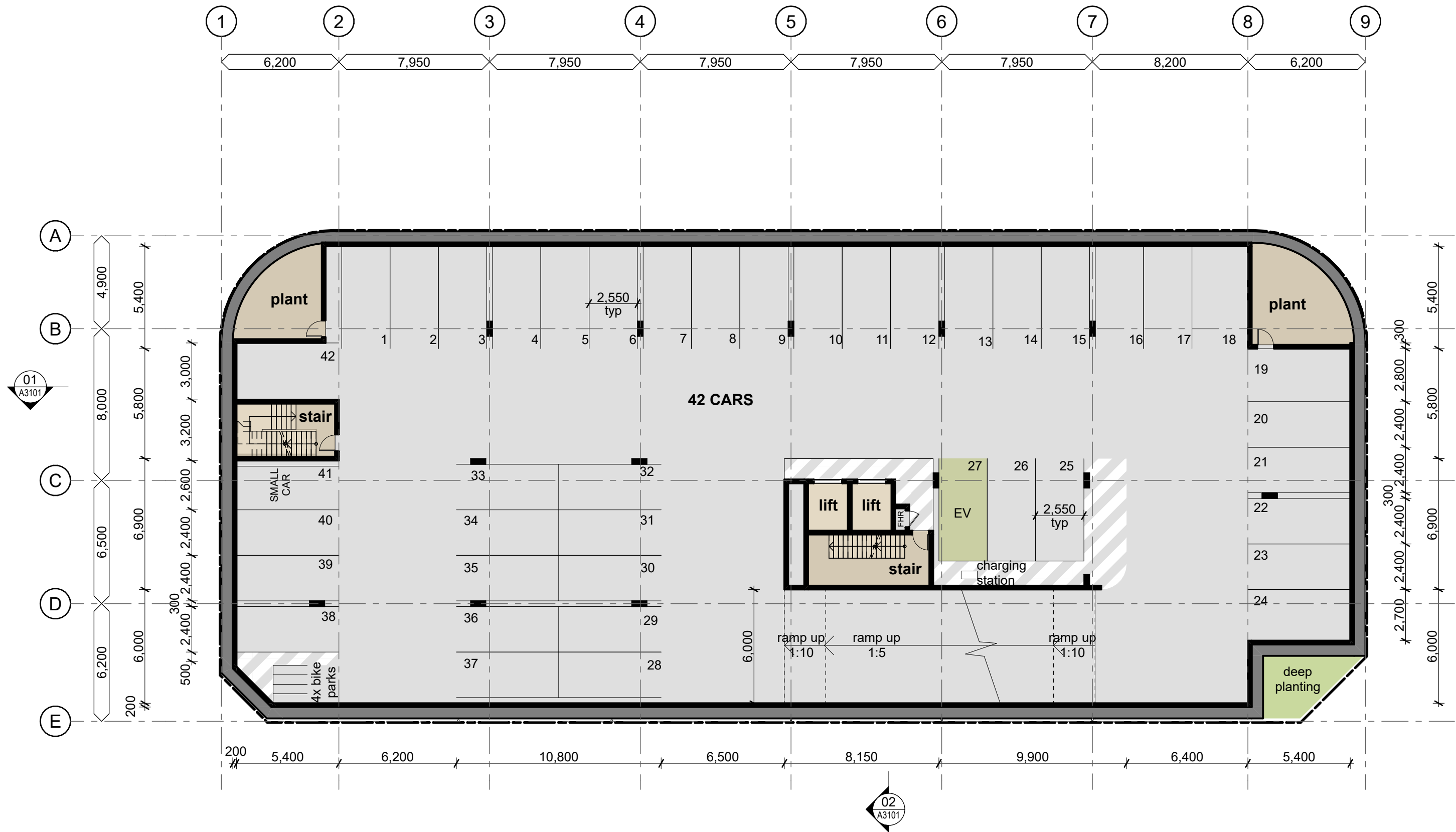


1 basement 2 floor plan
SCALE 1:200

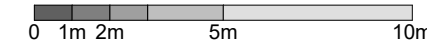


G	31/07/24	RFI response
F	05/03/24	issue for approval
E	27/02/24	issue for approval
D	23/02/24	issue for approval
C	22/02/24	coordination issue
issue	date	revision

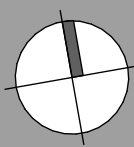


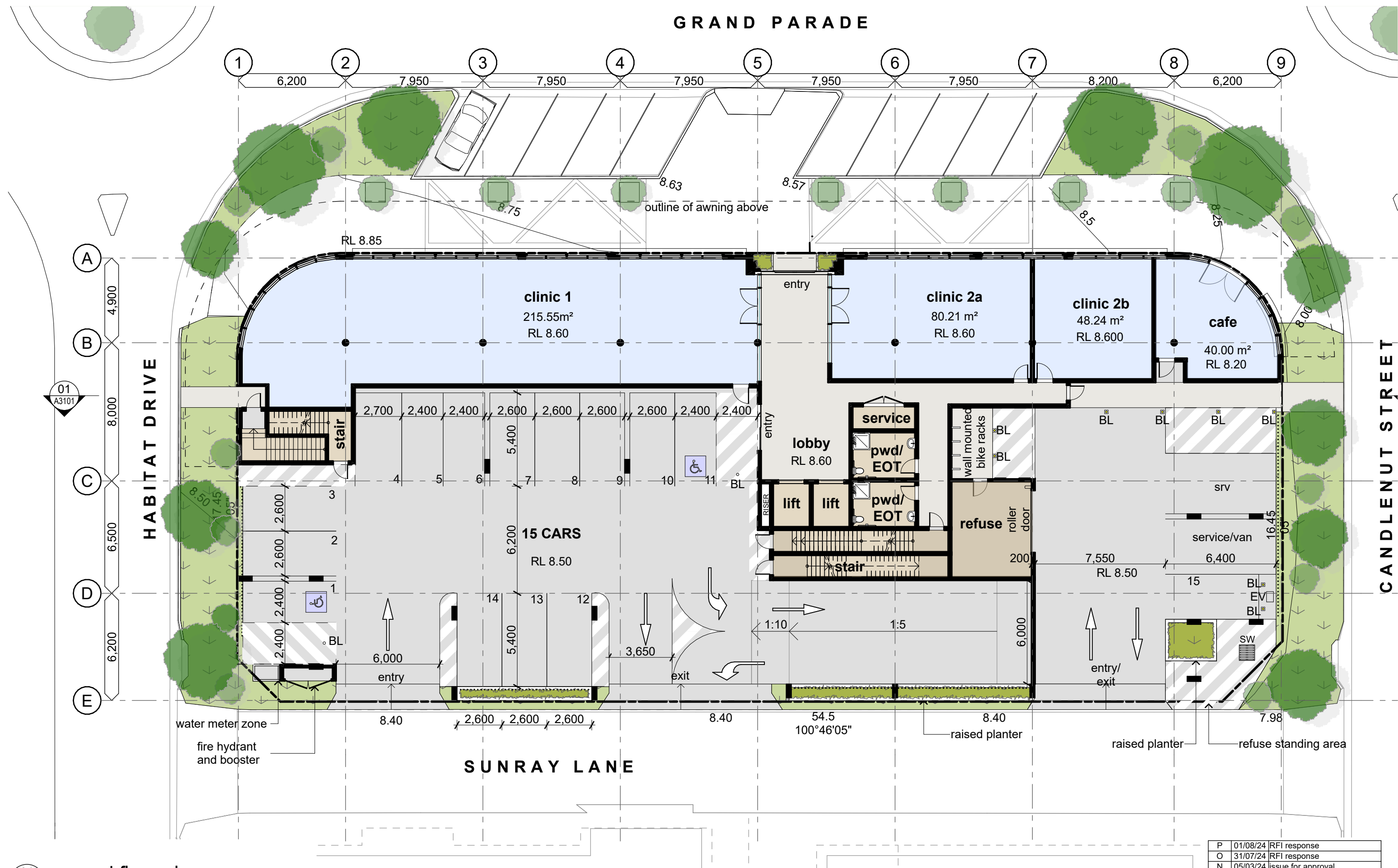


01 basement 1 floor plan
SCALE 1:200

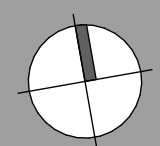


O	31/07/24	RFI response
N	05/03/24	issue for approval
M	27/02/24	issue for approval
L	23/02/24	issue for approval
K	22/02/24	coordination issue
issue	date	revision

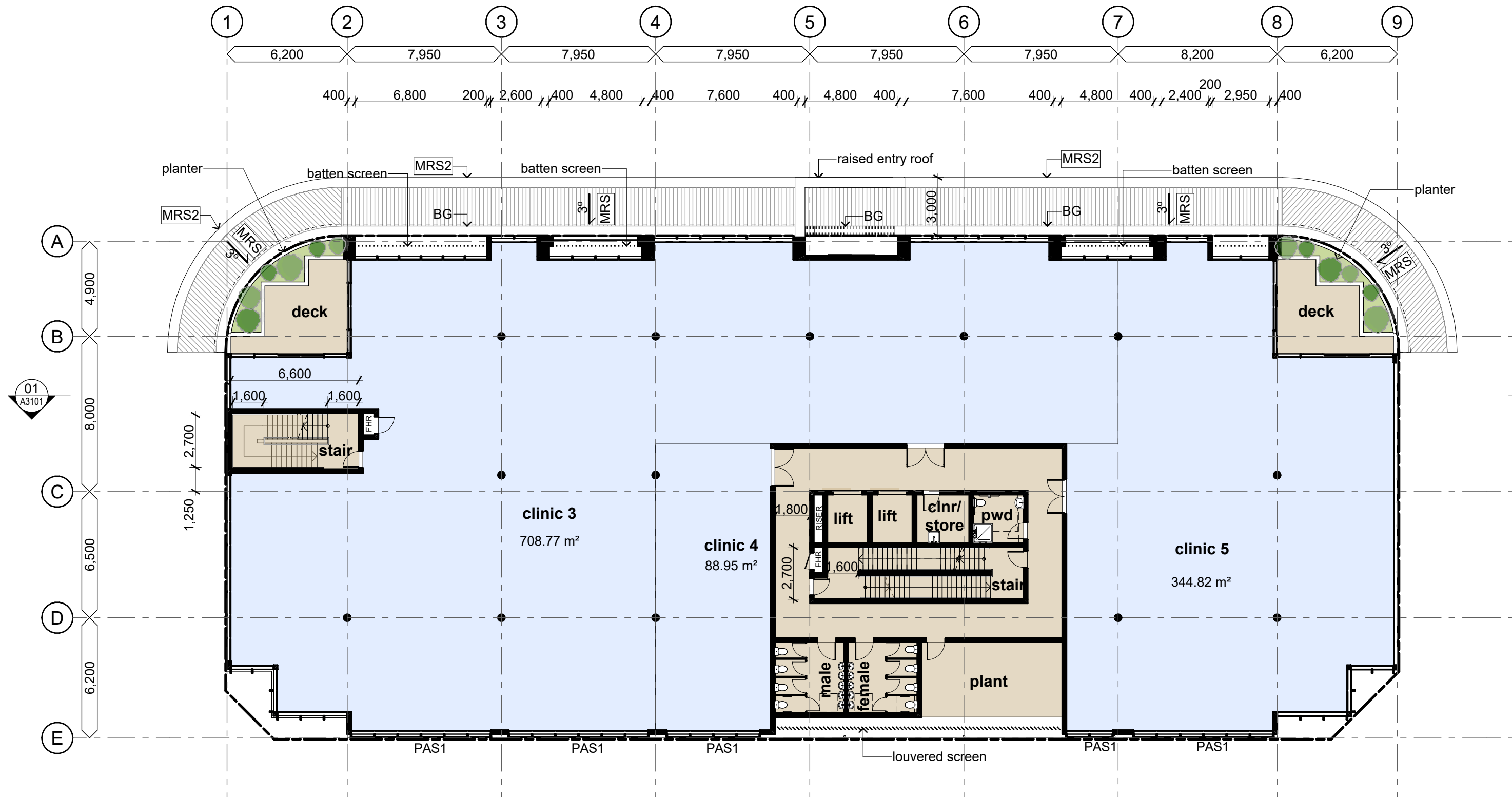




01 ground floor plan
SCALE 1:200



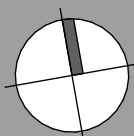
P	01/08/24	RFI response
O	31/07/24	RFI response
N	05/03/24	issue for approval
M	27/02/24	issue for approval
L	23/02/24	issue for approval
issue	date	revision

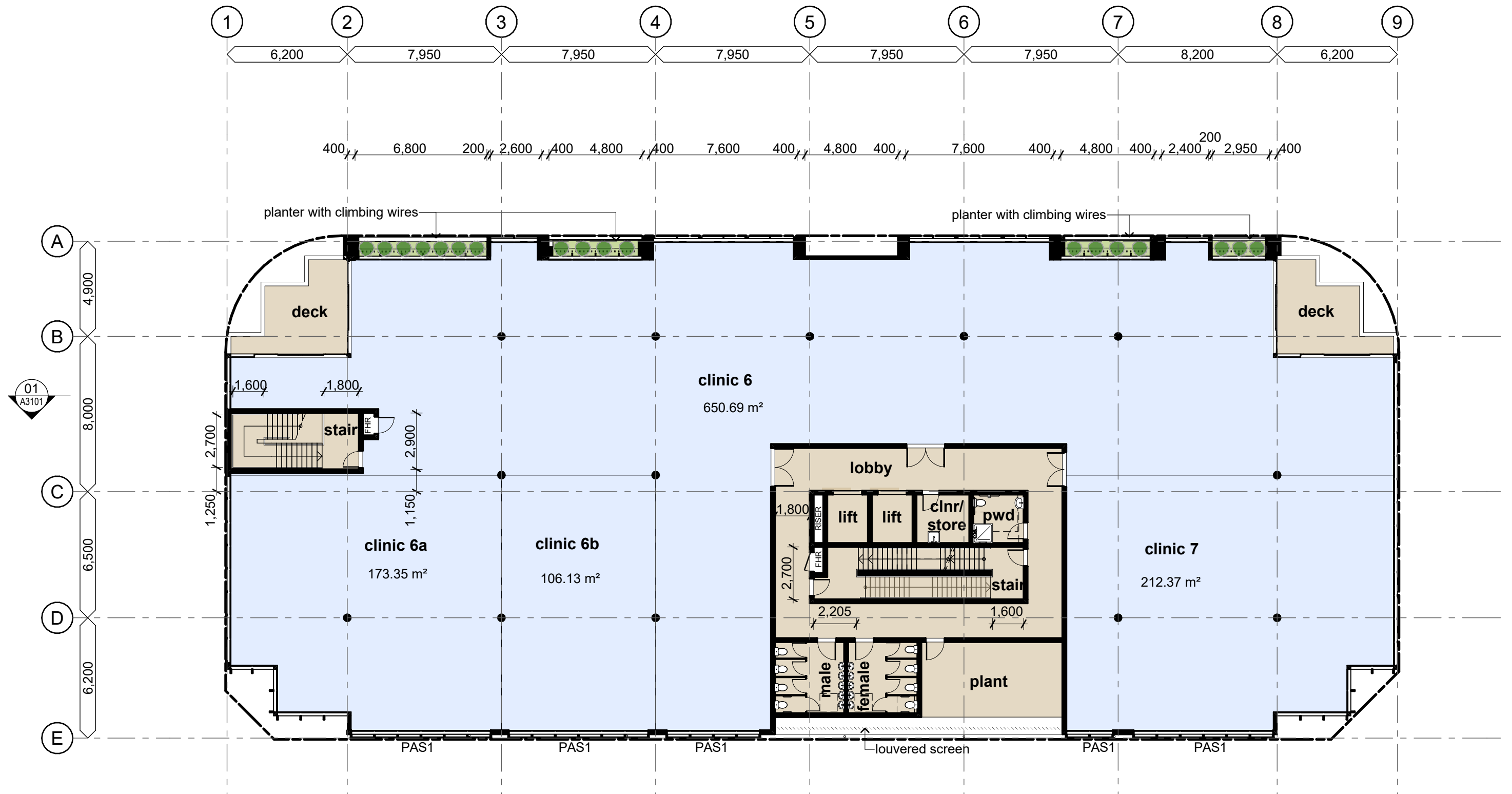


01 first floor plan
SCALE 1:200

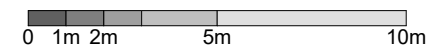


O	31/07/24	RFI response
N	05/03/24	issue for approval
M	27/02/24	issue for approval
L	23/02/24	issue for approval
K	22/02/24	coordination issue
issue	date	revision

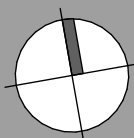


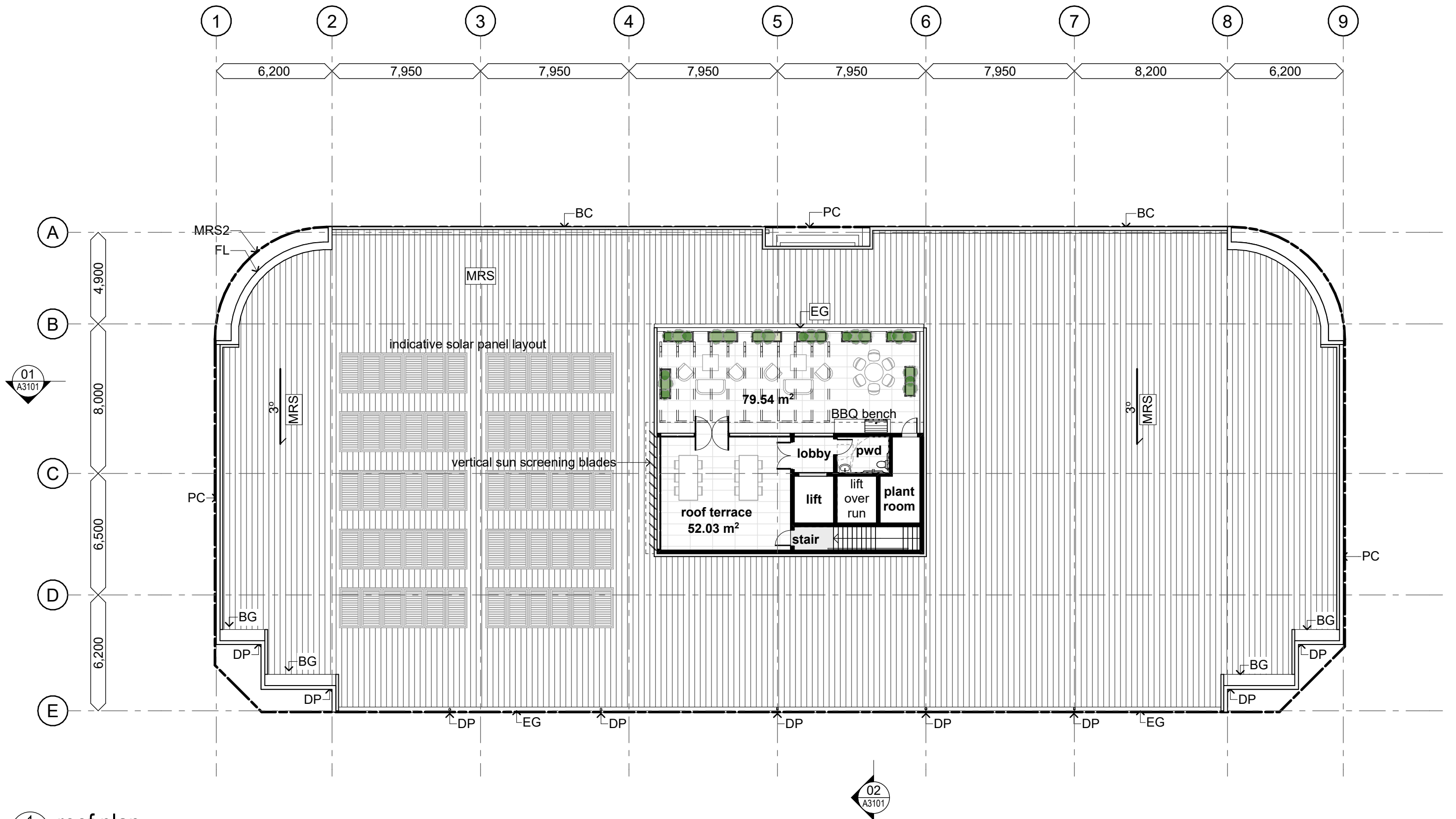


1 second floor plan
SCALE 1:200



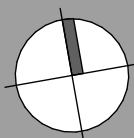
O	31/07/24	RFI response
N	05/03/24	issue for approval
M	27/02/24	issue for approval
L	23/02/24	issue for approval
K	22/02/24	coordination issue
issue	date	revision

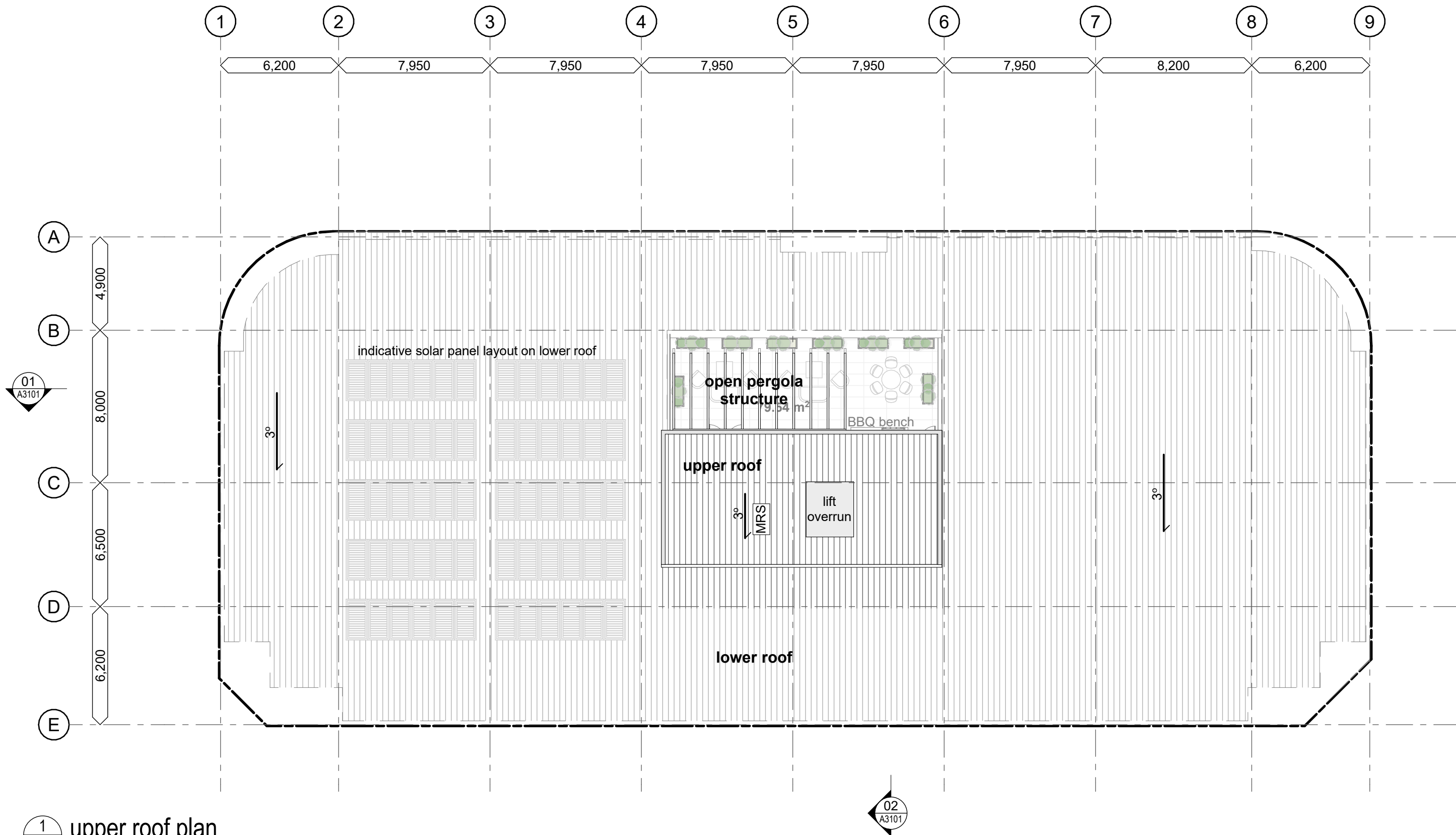




1 roof plan
SCALE 1:200

K	31/07/24	RFI response
J	05/03/24	issue for approval
I	27/02/24	issue for approval
H	23/02/24	issue for approval
G	22/02/24	coordination issue
issue	date	revision



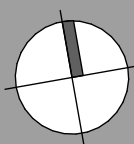


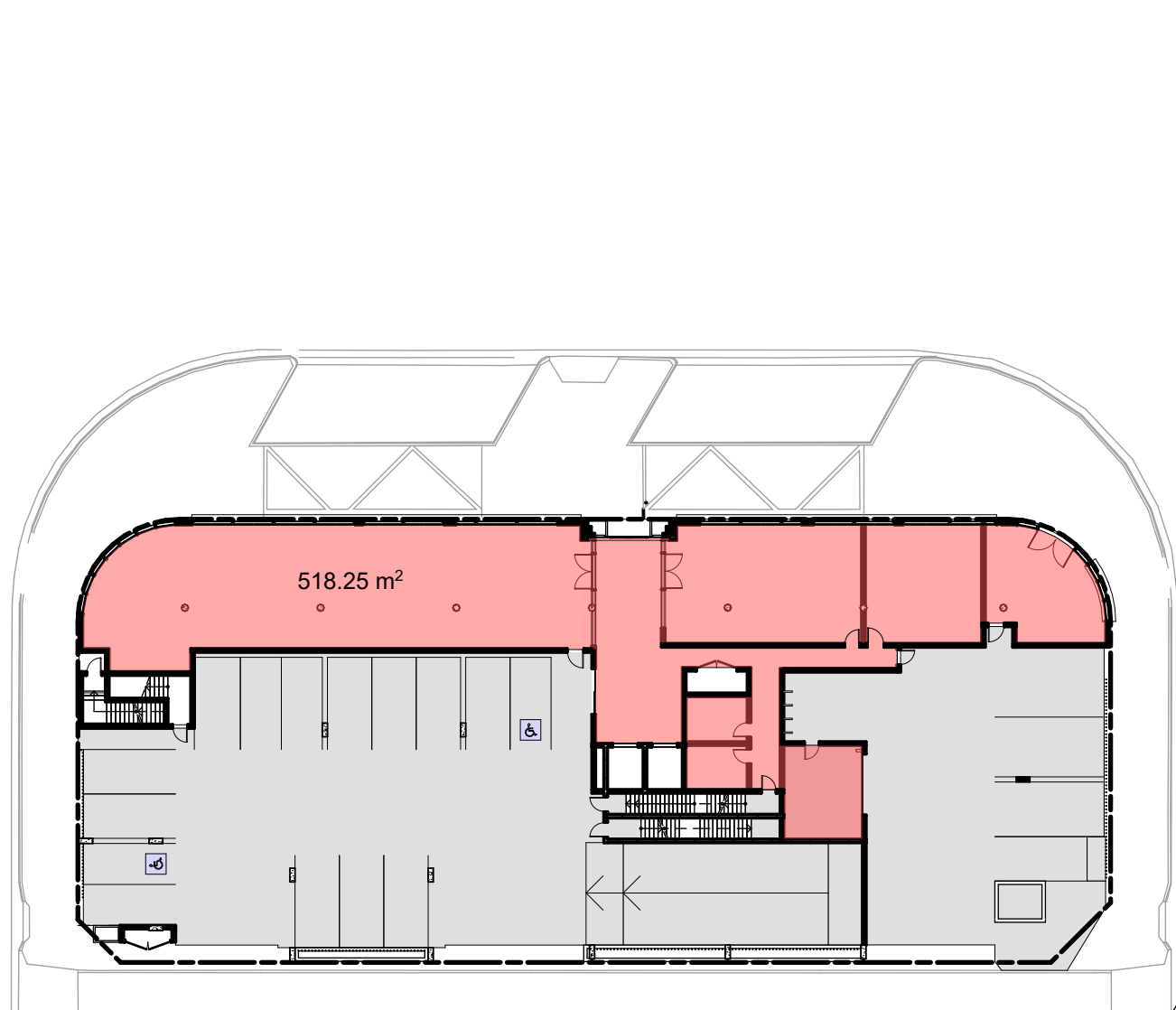
1 upper roof plan
SCALE 1:200

02
A3101

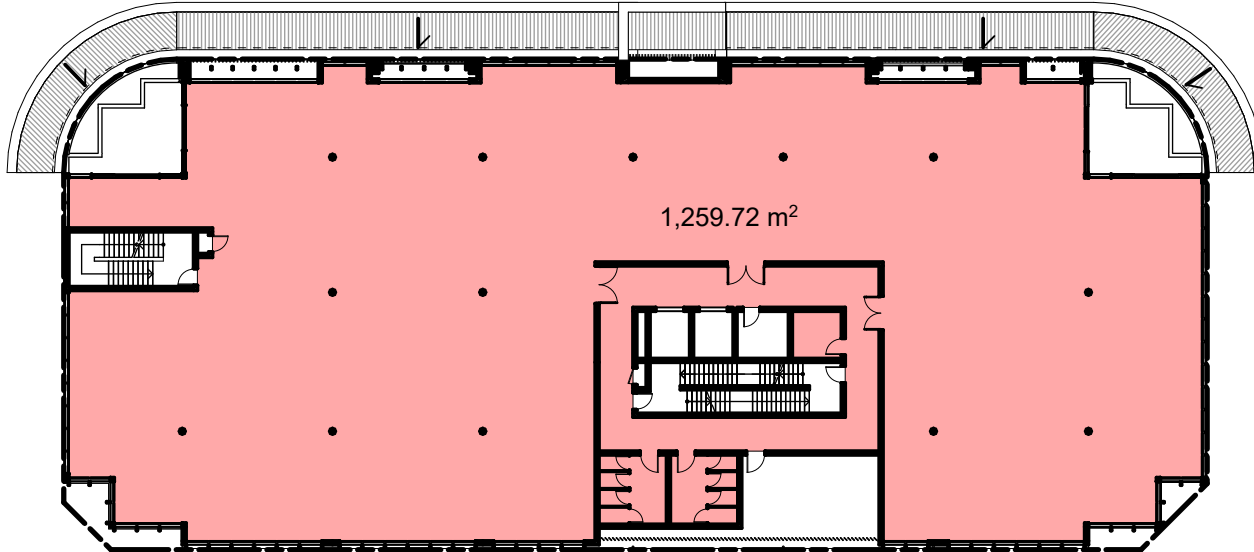
G	31/07/24	RFI response
F	05/03/24	issue for approval
E	27/02/24	issue for approval
D	23/02/24	issue for approval
C	22/02/24	coordination issue
issue	date	revision

0 1m 2m 5m 10m

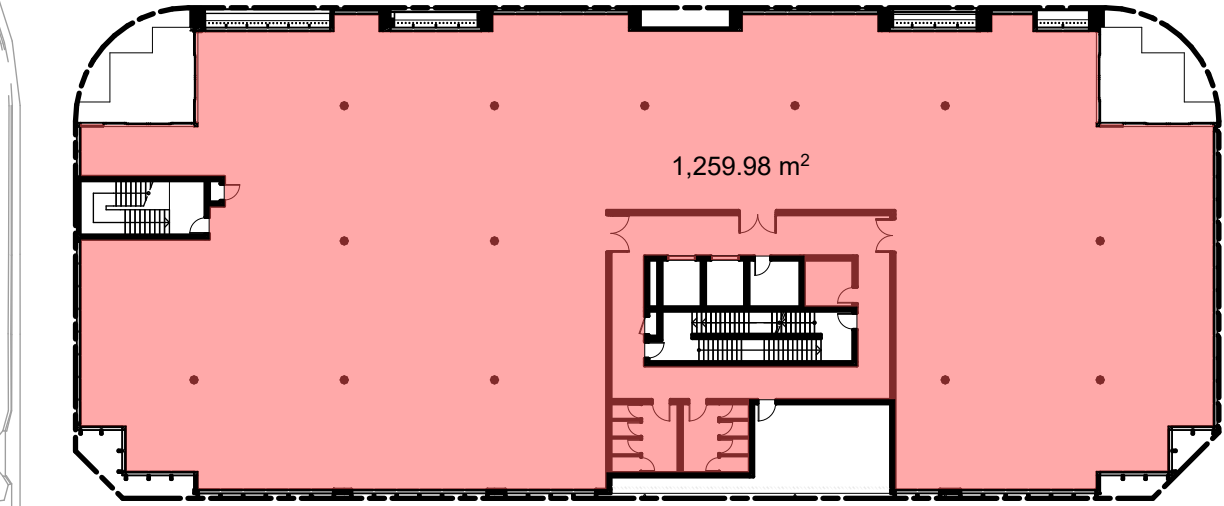




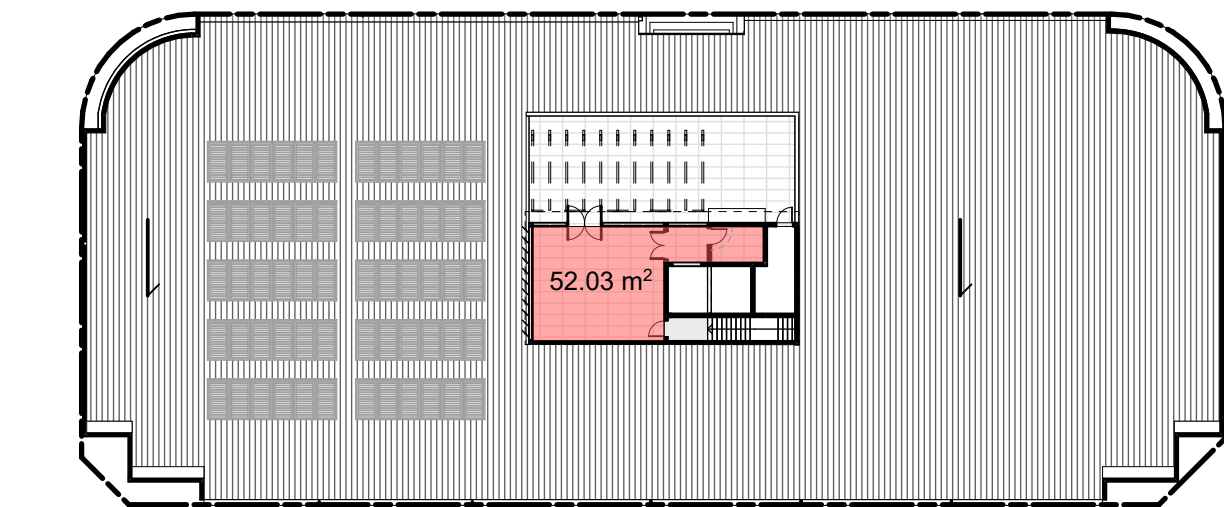
01 ground floor - GFA
SCALE 1:400



02 first floor - GFA
SCALE 1:400



03 second floor - GFA
SCALE 1:400



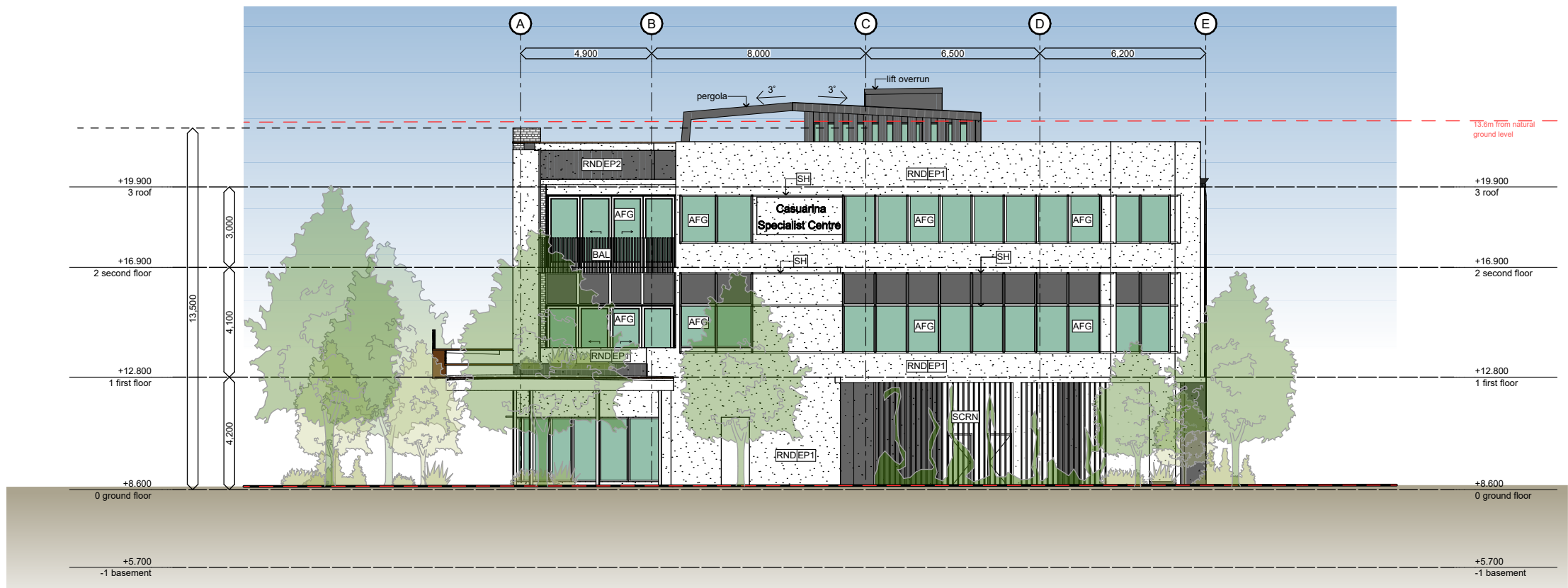
04 roof- GFA
SCALE 1:400

Amenities			
Class 6 (40m²)			
	Pans	Basins	Urinals
17.5 M	1	1	1
17.5 F	1	1	
Class 5 & 9a employees			
	Pans	Basins	Urinals
28.5 M	2	1	2
28.5 F	2	1	
Class 9a patients			
	Pans	Basins	
14 M	2	2	
14 F	2	2	

site information	
GFA	
Story	Measured Area
ground floor	518.25
first floor	1,259.72
second floor	1,259.98
roof	52.03
total GFA	3,089.98 m²
site area	1,545m²
floor space ratio	2.01:1

parking requirements	
Food and Drink - class 9	
staff parking	1 carpark /staff
customer parking	3.5 carpark /100m² GFA
total required carparks for cafe	4.5 carparks
medical center specialist- class 4	
staff parking	1.6 carpark /consulting room
customer parking	1.6 carpark /consulting room
total required carparks for medical	96 carparks
total carparks required	100.5
parking provided	
basement 2	44 cars
basement 1	42 cars
ground floor	15 cars
total provided	101 cars
+ 2 SRV bays including 2x PWD carparks	

H	31/07/24	RFI response
G	05/03/24	issue for approval
F	23/02/24	issue for approval
E	22/02/24	coordination issue
D	23/11/23	coordination issue
issue	date	revision



legend

materials

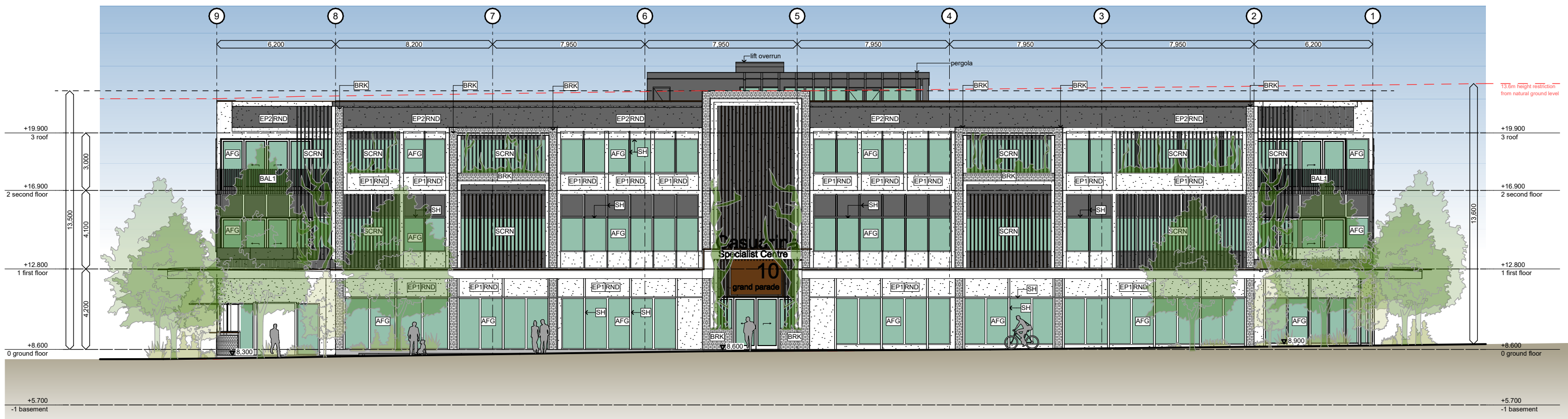
AFG	aluminium framed glazing
BAL	balustrade
BAT	aluminum powdercoated battens
BRK	white brick
MRS	colorbond metal roof sheeting
PAS	proprietary aluminium screen
RND	rendered finish
SCRN	aluminium powdercoated screen
SH	sun hood

finishes

EP1	paint colour 01
EP2	paint colour 02

fixtures

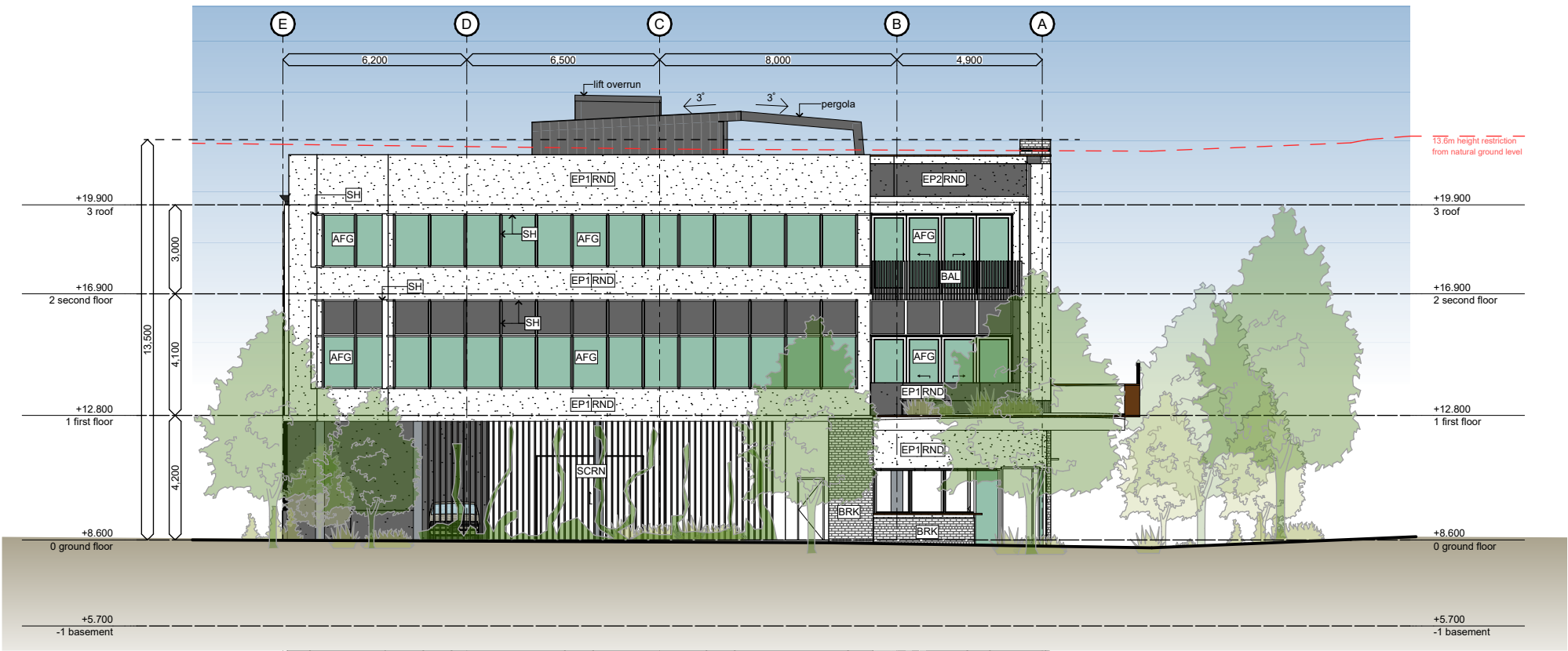
B	bollard
BR	bike rack
COL	column
	to structural engineer's specification
DP	downpipe
EG	eaves gutter



02 north elevation
SCALE 1:200

K	31/07/24	RFI response
J	05/03/24	issue for approval
I	27/02/24	issue for approval
H	23/02/24	issue for approval
G	22/02/24	coordination issue
issue	date	revision

0 1m 2m 5m 10m



01 east elevation
SCALE 1:200

legend

materials

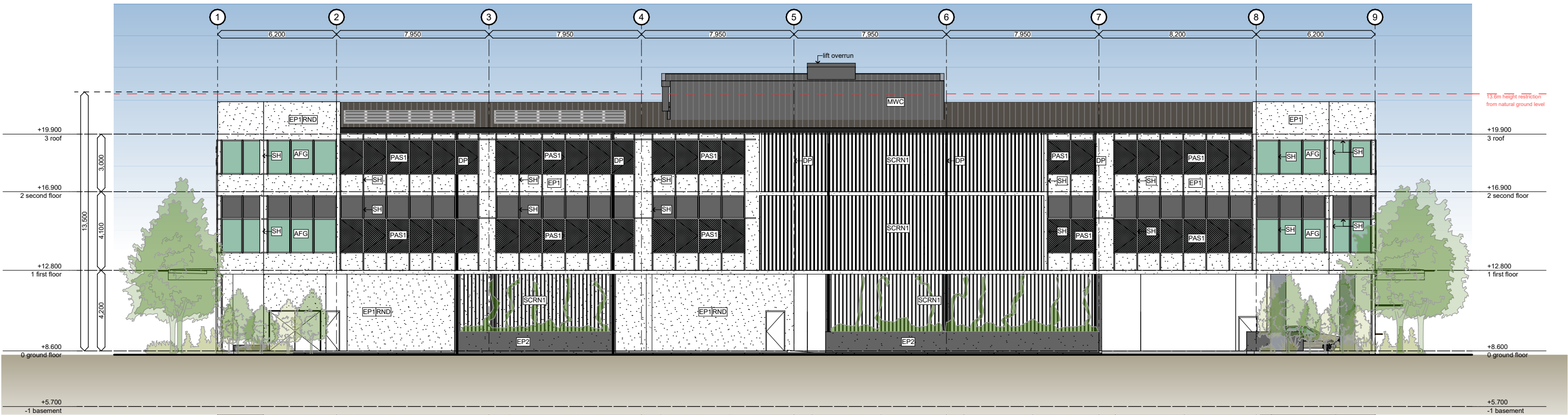
AFG	aluminium framed glazing
BAL	balustrade
BAT	aluminum powdercoated battens
BRK	white brick
MRS	colorbond metal roof sheeting
PAS	proprietary aluminium screen
RND	rendered finish
SCRN	aluminium powdercoated screen
SH	sun hood

finishes

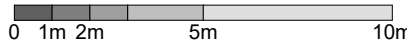
EP1	paint colour 01
EP2	paint colour 02

fixtures

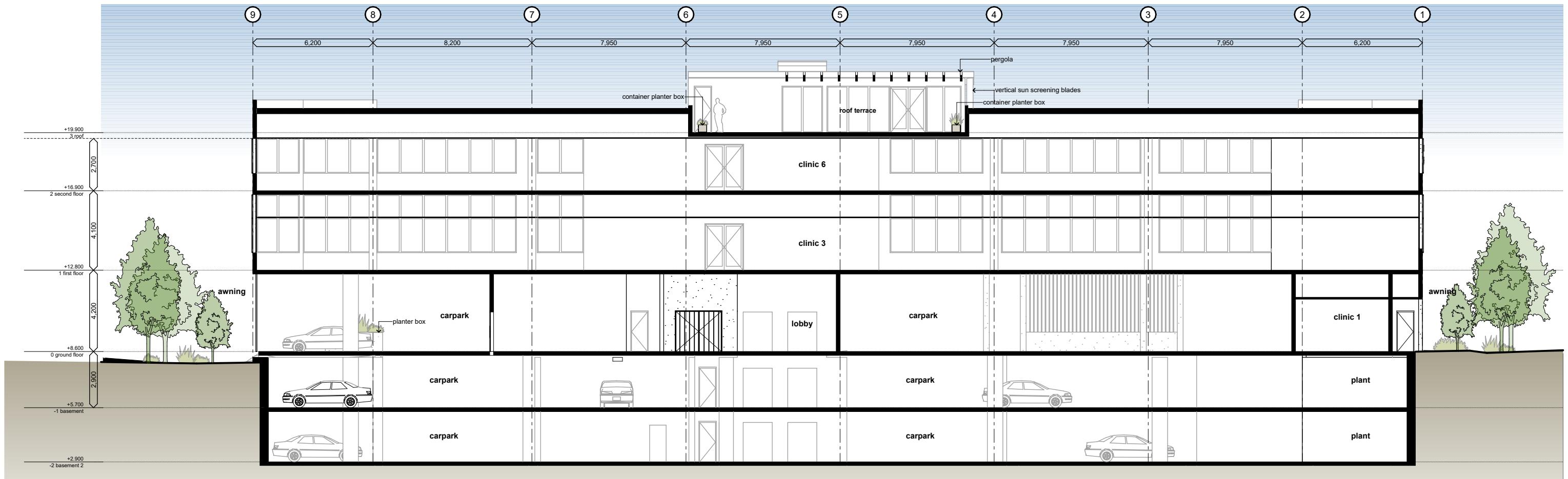
B	bollard
BR	bike rack
COL	column
<i>to structural engineer's specification</i>	
DP	downpipe
EG	eaves gutter



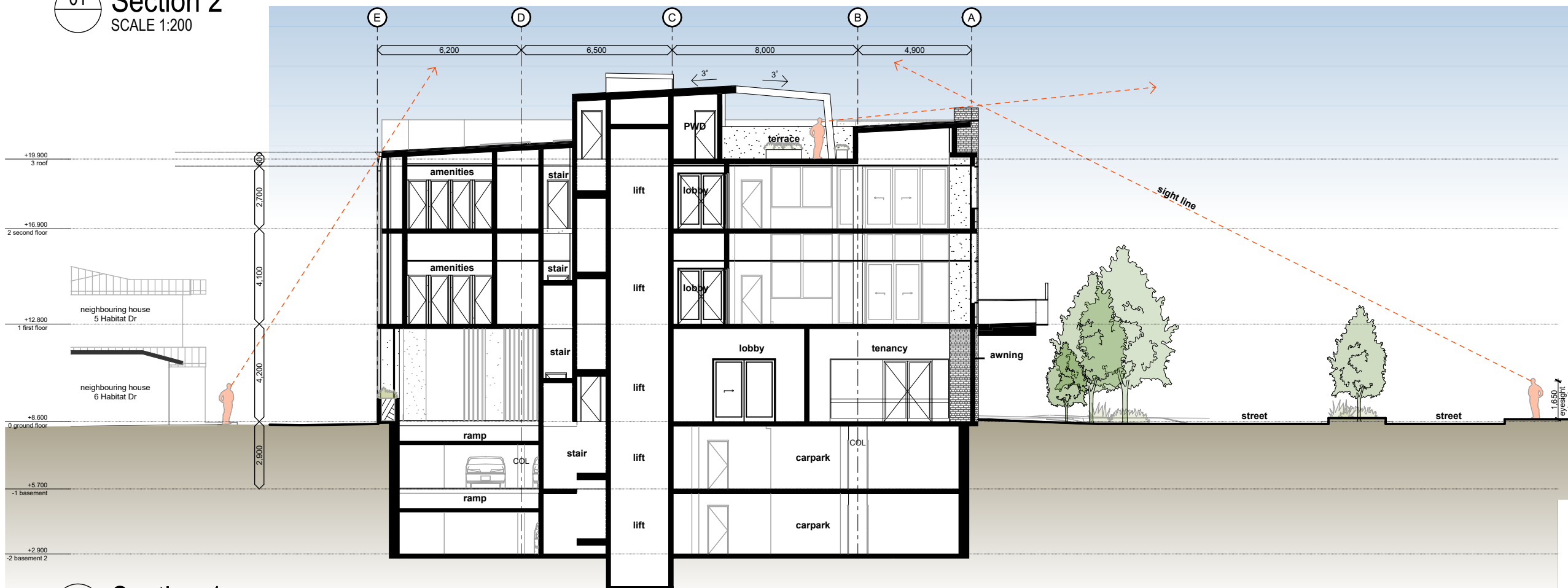
02 south elevation
SCALE 1:200



K	31/07/24	RFI response
J	05/03/24	issue for approval
I	27/02/24	issue for approval
H	23/02/24	issue for approval
G	22/02/24	coordination issue
issue	date	revision



01 Section 2
SCALE 1:200



02 Section 1
SCALE 1:200

J	31/07/24	RFI response
I	05/03/24	issue for approval
H	27/02/24	issue for approval
G	23/02/24	issue for approval
F	22/02/24	coordination issue
issue	date	revision



K	31/07/24	RFI response
J	05/03/24	issue for approval
I	27/02/24	issue for approval
H	23/02/24	issue for approval
G	22/02/24	coordination issue
issue	date	revision



K	31/07/24	RFI response
J	05/03/24	issue for approval
I	27/02/24	issue for approval
H	23/02/24	issue for approval
G	22/02/24	coordination issue
issue	date	revision



K	31/07/24	RFI response
J	05/03/24	issue for approval
I	27/02/24	issue for approval
H	23/02/24	issue for approval
G	22/02/24	coordination issue
issue	date	revision



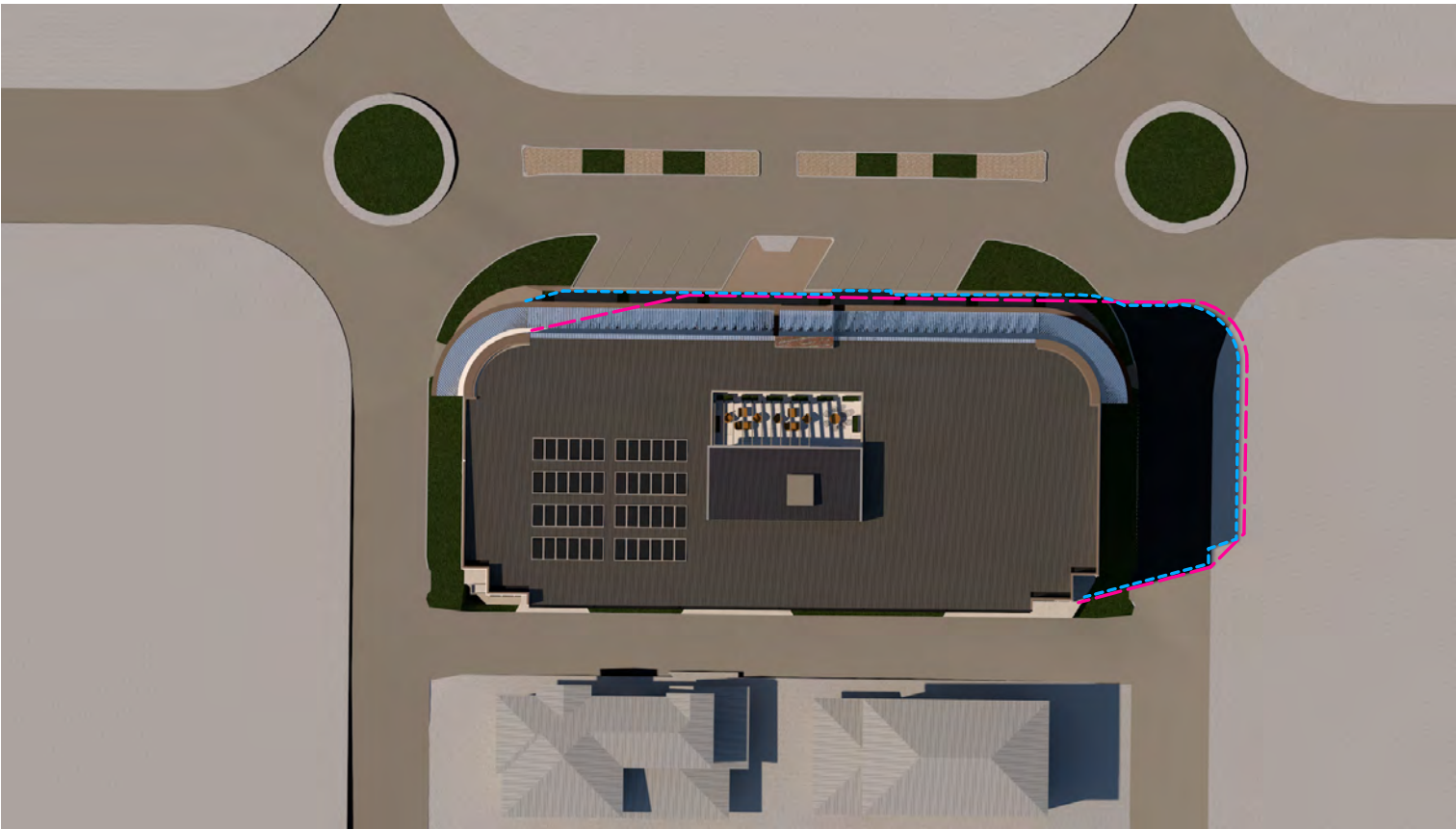
G	31/07/24	RFI response
F	05/03/24	issue for approval
E	27/02/24	issue for approval
D	23/02/24	issue for approval
C	22/02/24	coordination issue
issue	date	revision



proposed development 21 december 9am



proposed development 21 december 12pm

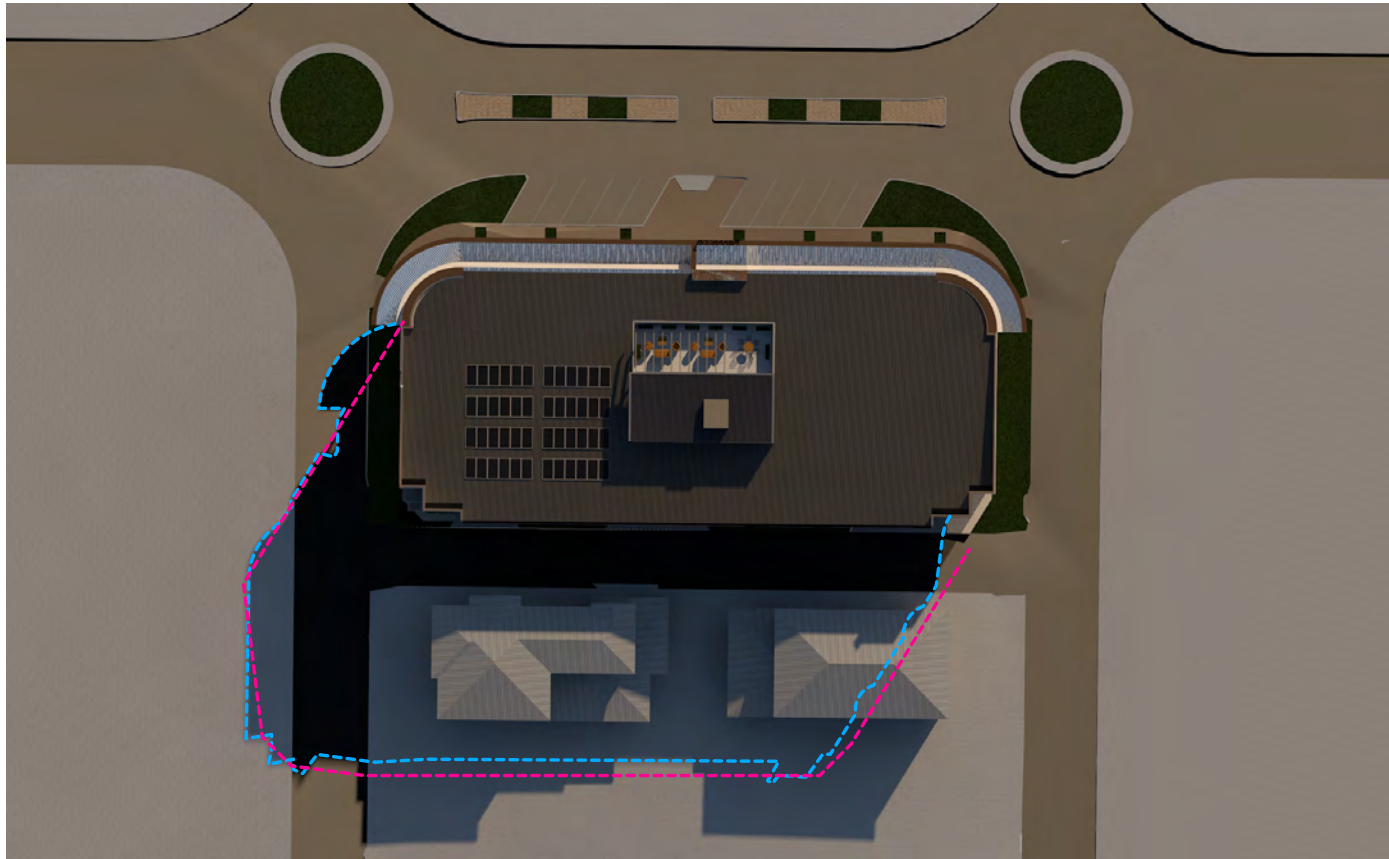


proposed development 21 december 3pm

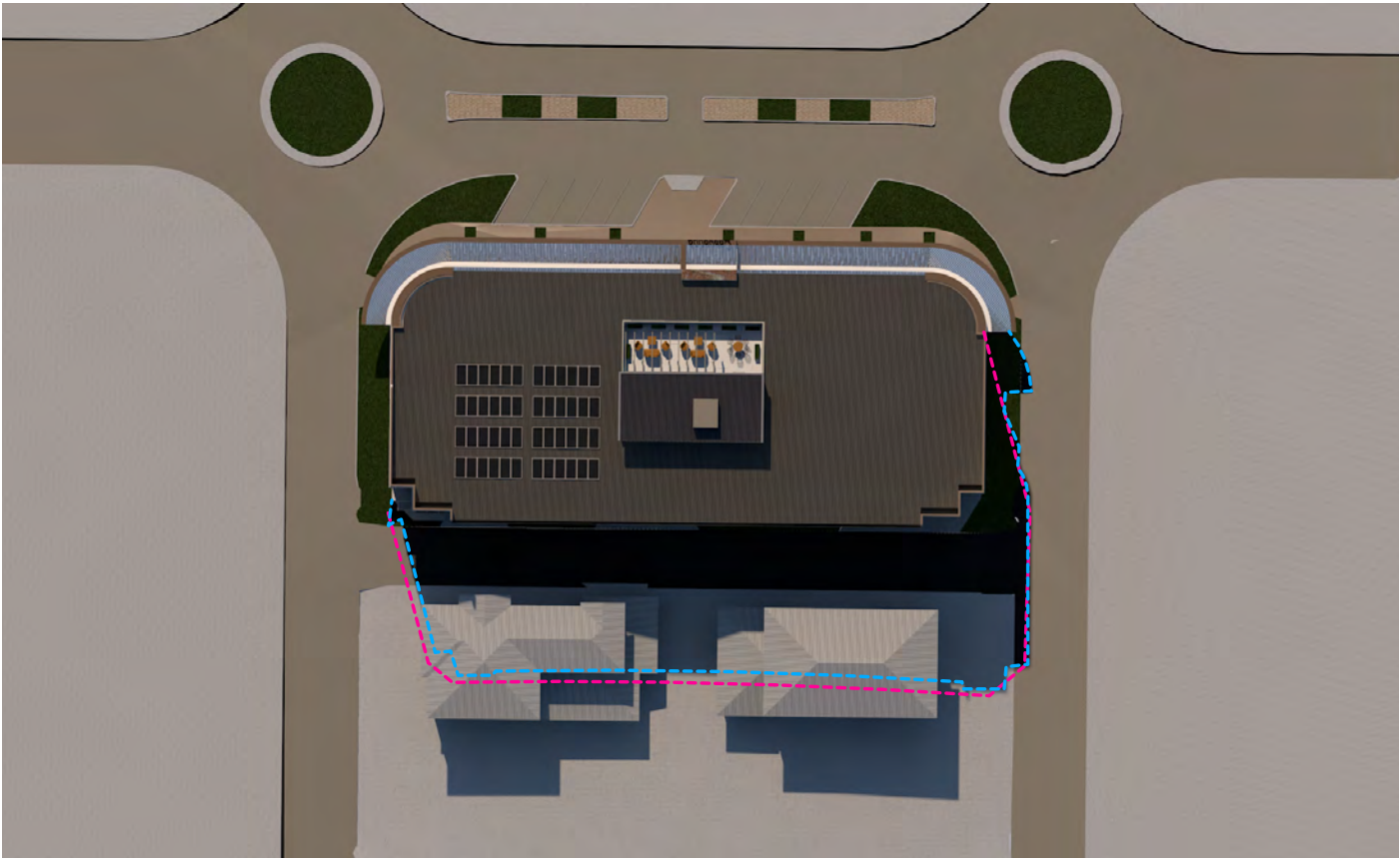
----- extent of shadow line for alternative development complaint 13.6m residential development shown thus

----- extent of shadow line for proposed development shown thus

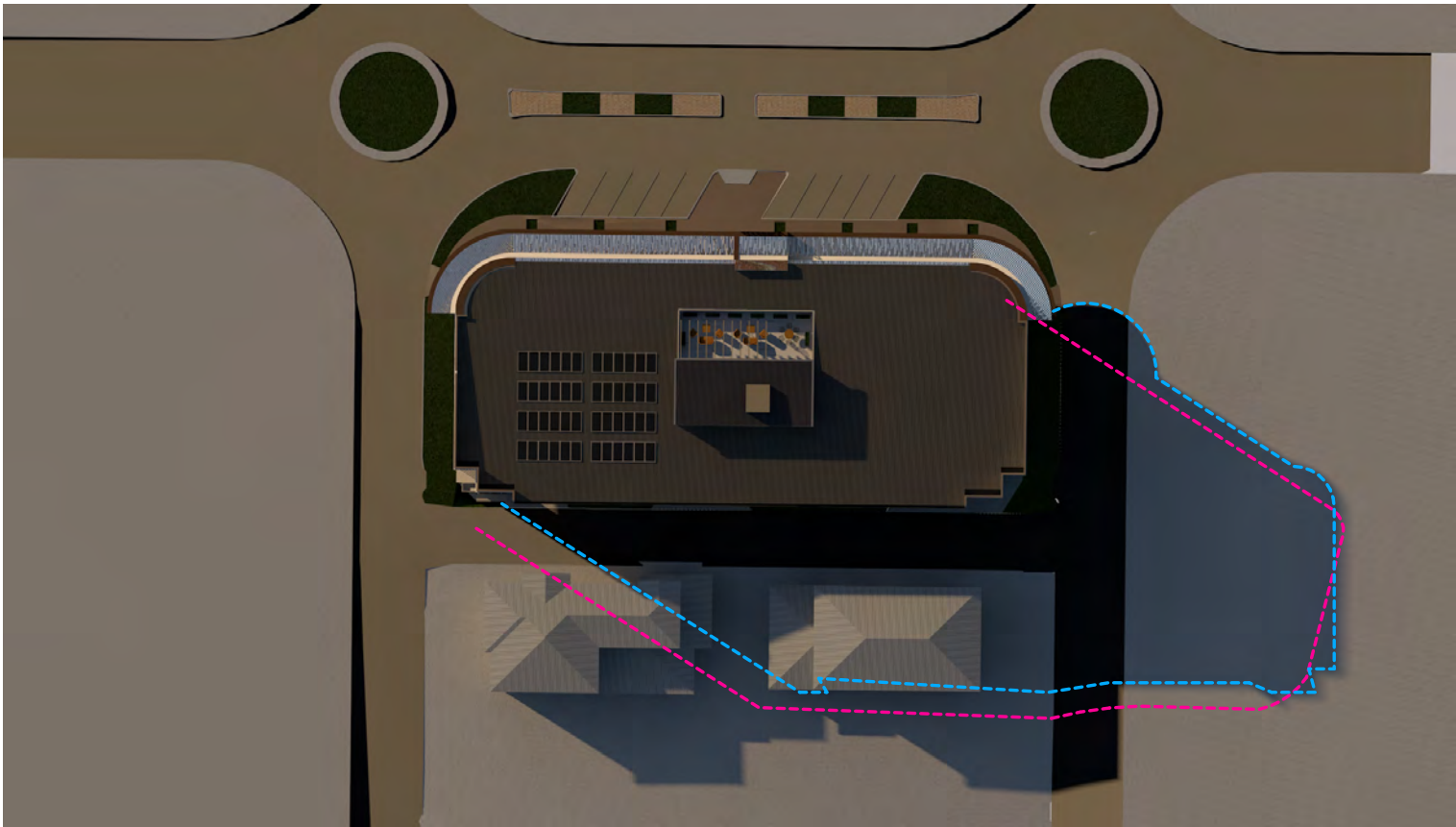
C	31/07/24	RFI response
B	05/03/24	issue for approval
A	27/02/24	issue for approval
issue	date	revision



proposed development 21 june 9am



proposed development 21 june 12pm



proposed development 21 june 3pm

----- extent of shadow line for alternative development complaint 13.6m residential development shown thus

----- extent of shadow line for proposed development shown thus

A	31/07/24	RFI response
issue	date	revision



A	31/07/24	RFI response
issue	date	revision