



# GLASS SPECIFICATIONS

- HAWKESBURY bifold doors
- Clear 'T' safety Glass to all bifold doors
- Bifolds doors all aluminium fabrication
- Powder coated frames to match existing building colour
- All construction will be in accordance with the current BCA



SydneyOlympicPark

Sydney Olympic Park Authority  
8 Australia Avenue Sydney Olympic Park NSW 2197

Issued under the Environmental, Planning and Assessment Act 1979

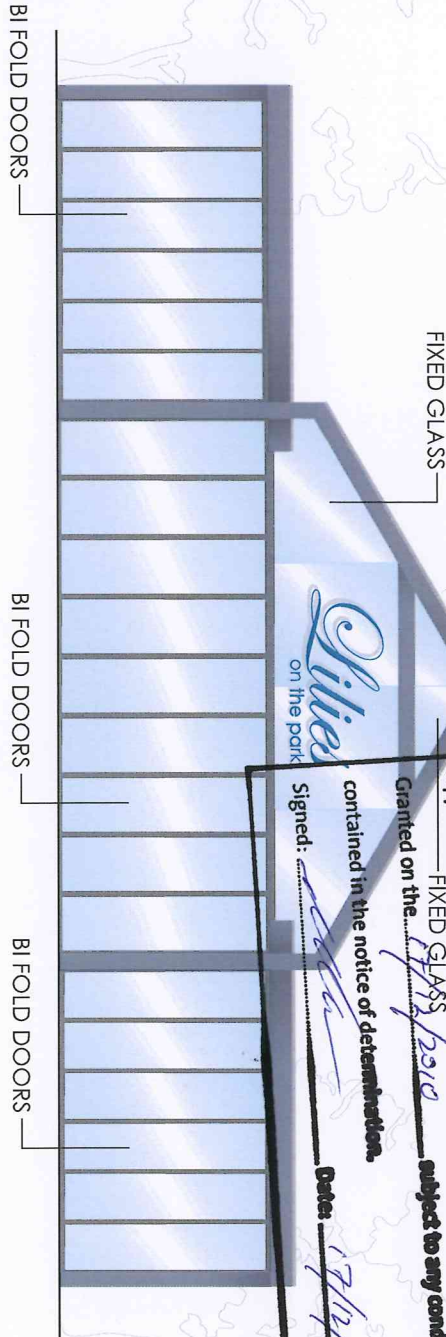
Approved Development Application No. 174-11-2010

Granted on the 17/12/2010 subject to any conditions

contained in the notice of determination.

Signed: [Signature] Date: 17/12/2010

182



Lilies on the park



JOB:	Lilies on the park	DESCRIPTION:	Lilies Glass Specifications	PAPER SIZE:	A3
LOCATION:	Bicentennial Park, Sydney olympic park	DRAWING:	WCC10-02-B	SCALE:	N.T.S
CLIENT:	Waterview Convention Centre	DRAWING NO:		DRAWN BY:	B.S

NSW  
Sydney Olympic Park Authority  
8 Australia Avenue Sydney Olympic Park NSW 1501

Issued under the Environmental, Planning and Assessment Act 1979

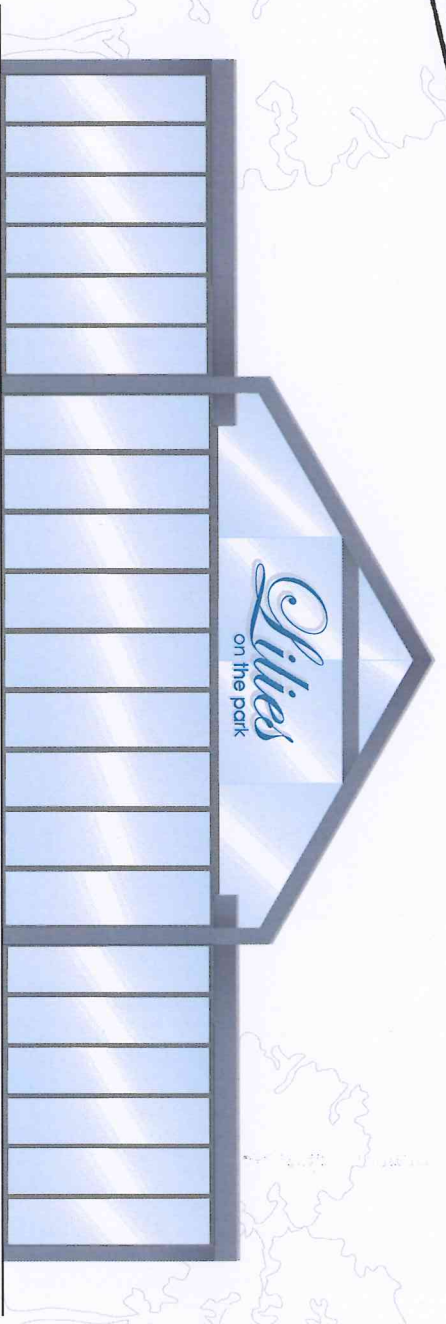
Approved Development Application No. 17/12/2500 subject to any conditions

Granted on the 17/12/2010 contained in the notice of determination.

Signed: [Signature] Date: 17/12/2010

Lilies on the park

- Laser cut MDF
- Sprayed 2pac polyurethane
- 'Lilies' text 40mm thick
- 'on the park' text 20mm thick
- Non Illuminated
- Direct stuck to outside of glass
- Block out sticker on reverse side of glass to cover fixing



WATERVIEW CONVENTION CENTRE		Lilies on the park	
CLIENT: Waterview Convention Centre		DESCRIPTION: Lilies New Signage	PAPER SIZE: A3
LOCATION: Bicentennial Park, Sydney olympic park		DRAWING: WCC10-02-B	SCALE: N.T.S
		DRAWING NO:	DRAWN BY: B.S