

PRODUCT OF SOPA CADD UNIT (02) 9714-7875



SYDNEY OLYMPIC PARK AUTHORITY
7 FIGTREE DRIVE SYDNEY OLYMPIC PARK NSW 2127
PH (02) 9714 7300 FAX (02) 9714 7818

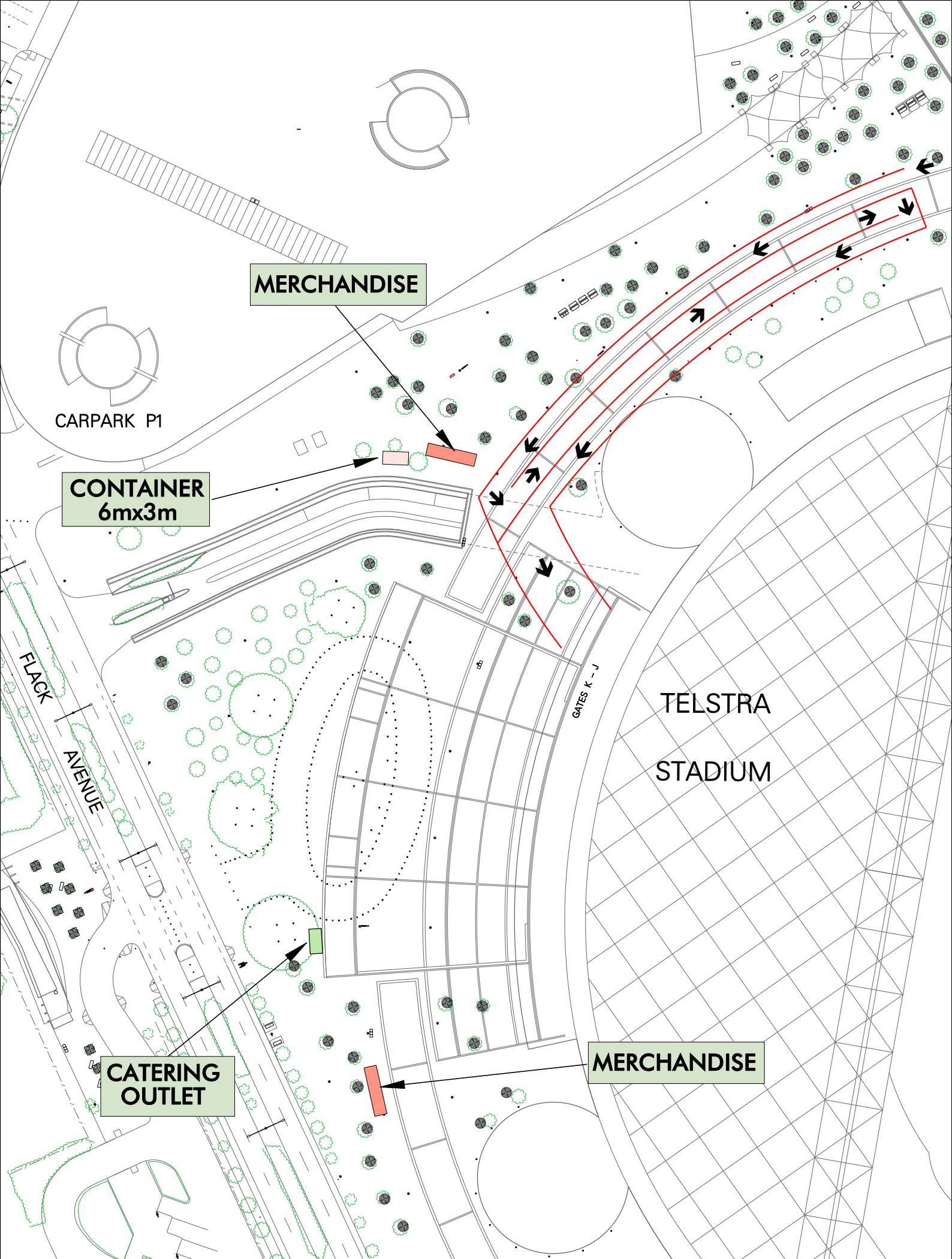
DISTRIBUTION CONTROL
THIS DRAWING REMAINS THE PROPERTY OF THE SYDNEY OLYMPIC PARK AUTHORITY. EXCEPT AS PROVIDED IN THE CONDITIONS OF ISSUE IT SHALL NOT BE COPIED IN WHOLE OR IN PART NOR RE-ISSUED IN ANY FORM TO ANY OTHER PARTY WITHOUT THE WRITTEN APPROVAL OF THE SYDNEY OLYMPIC PARK AUTHORITY.

SYDNEY OLYMPIC PARK AFL SET-UP

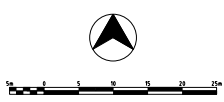


DRG. NO. : 001-N-G-0732 REV.B
SCALE: AS PER SCALE BAR

PLOT DATE: 16/04/2010



PRODUCT OF SOPA CADD UNIT (02) 9714-7875



SYDNEY OLYMPIC PARK AUTHORITY
7 FIGTREE DRIVE SYDNEY OLYMPIC PARK NSW 2127
PH (02) 9714 7300 FAX (02) 9714 7818

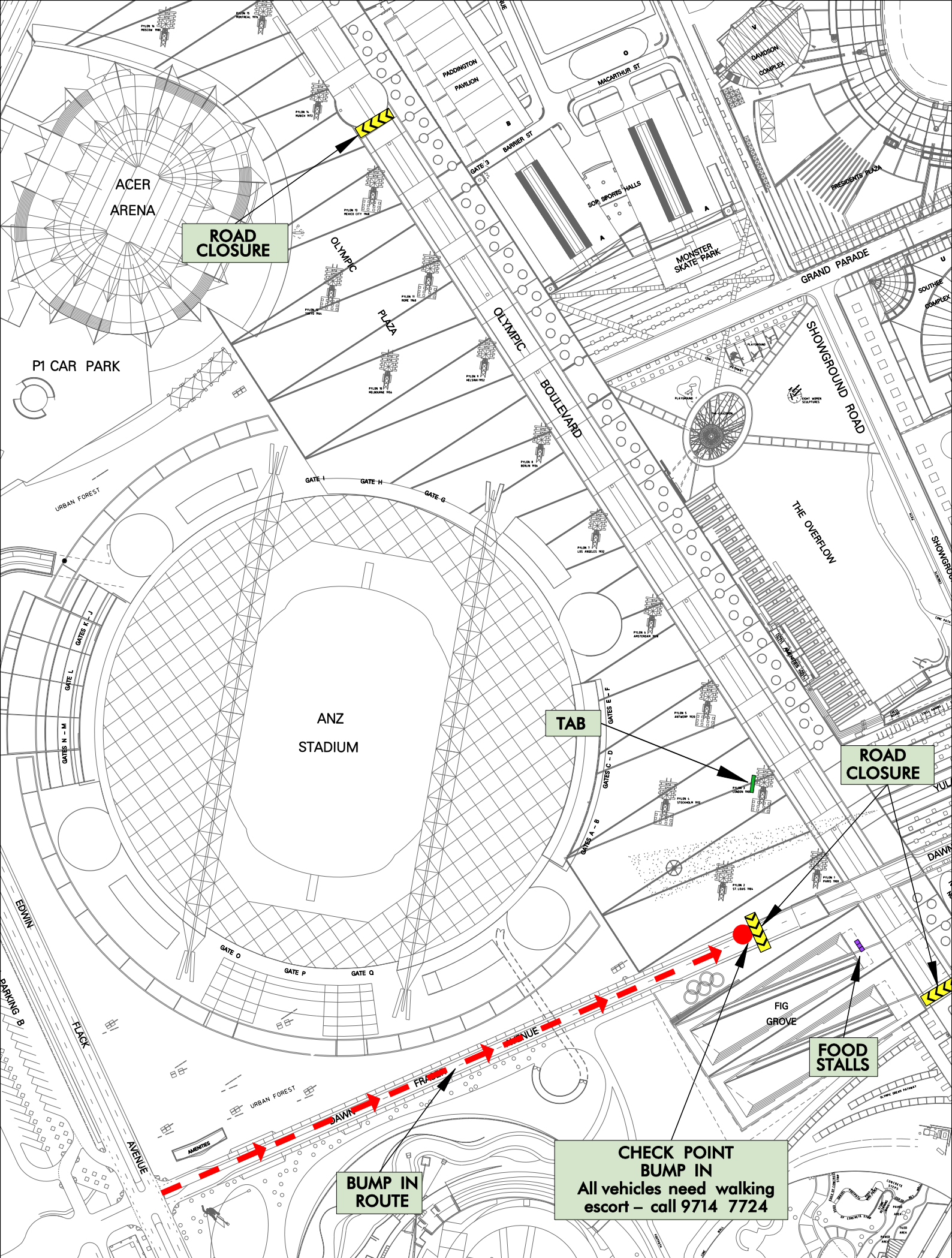
DISTRIBUTION CONTROL
THIS DRAWING REMAINS THE PROPERTY OF THE SYDNEY OLYMPIC PARK AUTHORITY EXCEPT AS PROVIDED IN THE CONDITIONS OF ISSUE. IT SHALL NOT BE COPIED IN WHOLE OR IN PART NOR RE-ISSUED IN ANY FORM TO ANY OTHER PARTY WITHOUT THE WRITTEN APPROVAL OF THE SYDNEY OLYMPIC PARK AUTHORITY.

SYDNEY OLYMPIC PARK
CONCERT - WEST



DRG. NO. : 001-N-G-0740 REV. A
SCALE:

PLOT DATE: 19/04/2010



PRODUCT OF SOPA CADD UNIT (02) 9714-7875



SYDNEY OLYMPIC PARK AUTHORITY
7 FIGTREE DRIVE SYDNEY OLYMPIC PARK NSW 2127
PH (02) 9714 7300 FAX (02) 9714 7818

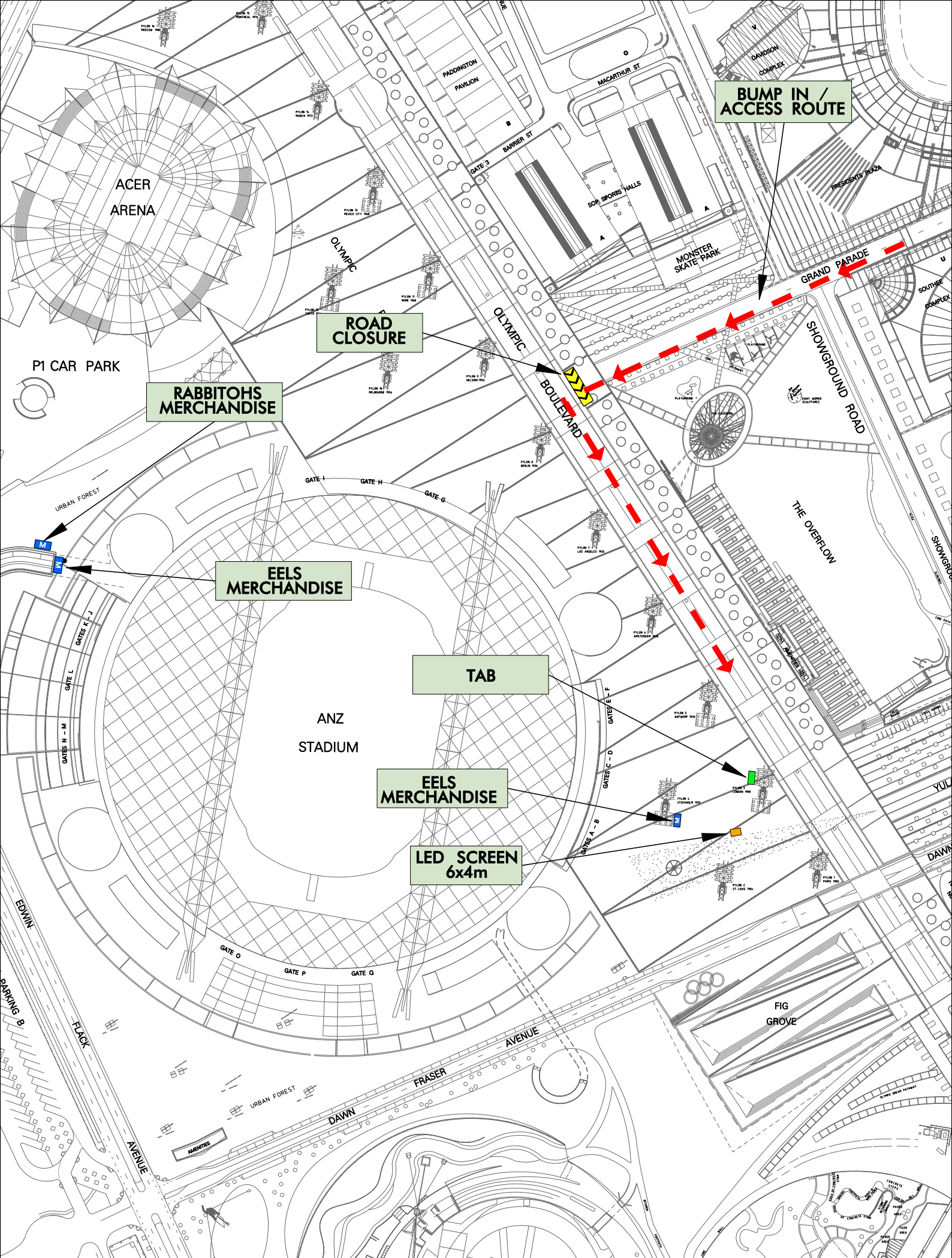
DISTRIBUTION CONTROL
THIS DRAWING REMAINS THE PROPERTY OF THE SYDNEY OLYMPIC PARK AUTHORITY EXCEPT AS PROVIDED IN THE CONDITIONS OF ISSUE. IT SHALL NOT BE COPIED IN WHOLE OR IN PART NOR RE-ISSUED IN ANY FORM TO ANY OTHER PARTY WITHOUT THE WRITTEN APPROVAL OF THE SYDNEY OLYMPIC PARK AUTHORITY.

SYDNEY OLYMPIC PARK
NRL
CLUB GAMES # 4



DRG. NO. : 001-N-G-0739 REV. A
SCALE: AS PER SCALE BAR

PLOT DATE: 19/04/2010



PRODUCT OF SOPA CADD UNIT (02) 9714-7875

SYDNEY OLYMPIC PARK AUTHORITY
7 FIGTREE DRIVE SYDNEY OLYMPIC PARK NSW 2127
PH (02) 9714 7300 FAX (02) 9714 7818

SYDNEY OLYMPIC PARK
NRL
CLUB GAMES # 3

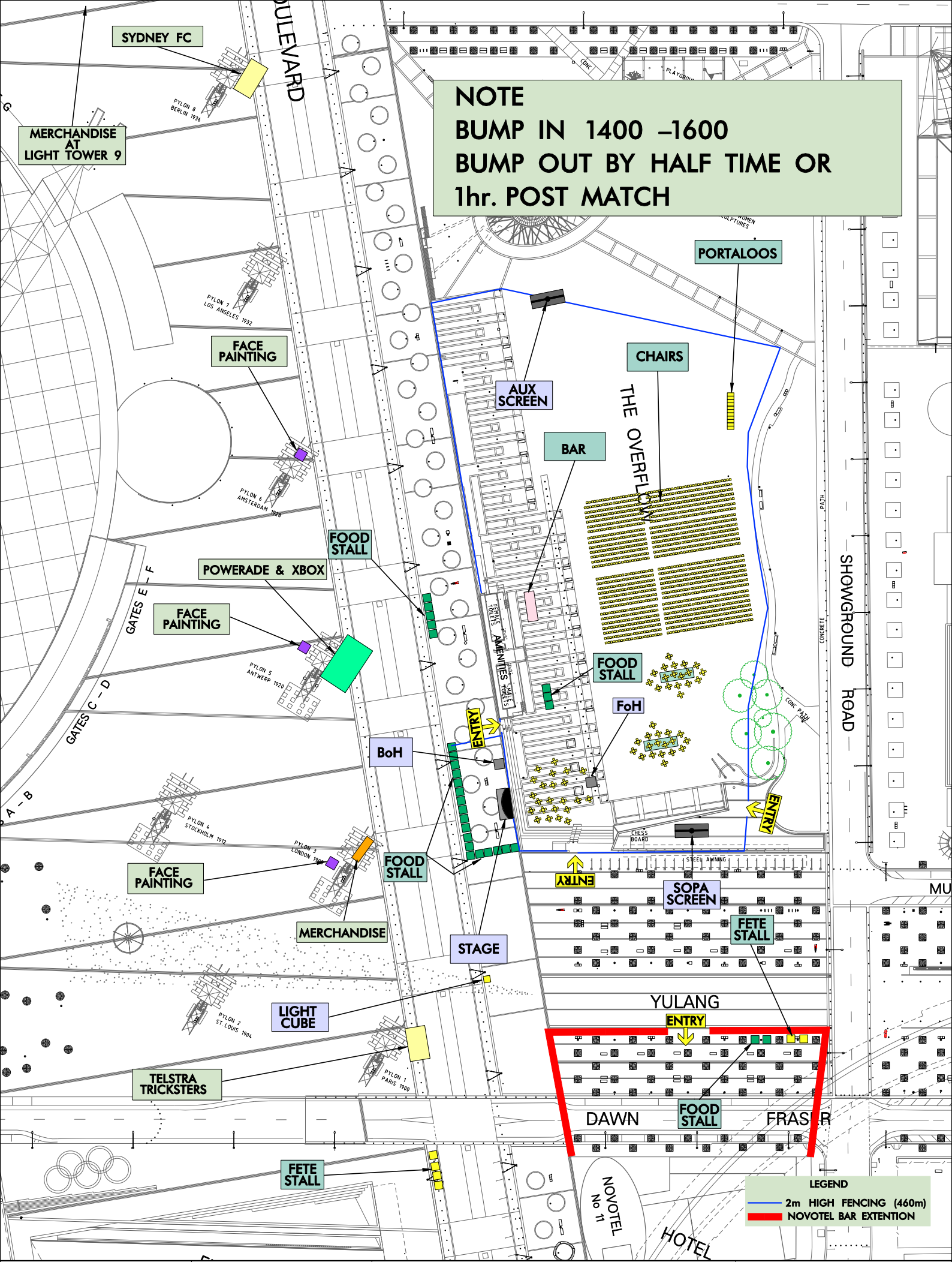


DRG. NO. : 001-N-G-0738 REV. A
SCALE: AS PER SCALE BAR

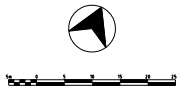
PLOT DATE: 19/04/2010



DISTRIBUTION CONTROL
THIS DRAWING REMAINS THE PROPERTY OF THE SYDNEY OLYMPIC PARK AUTHORITY EXCEPT AS PROVIDED IN THE CONDITIONS OF ISSUE. IT SHALL NOT BE COPIED IN WHOLE OR IN PART NOR RE-ISSUED IN ANY FORM TO ANY OTHER PARTY WITHOUT THE WRITTEN APPROVAL OF THE SYDNEY OLYMPIC PARK AUTHORITY.



PRODUCT OF SOPA CADD UNIT (02) 9714-7875



SYDNEY OLYMPIC PARK AUTHORITY
 7 FIGTREE DRIVE SYDNEY OLYMPIC PARK NSW 2127
 PH (02) 9714 7300 FAX (02) 9714 7818

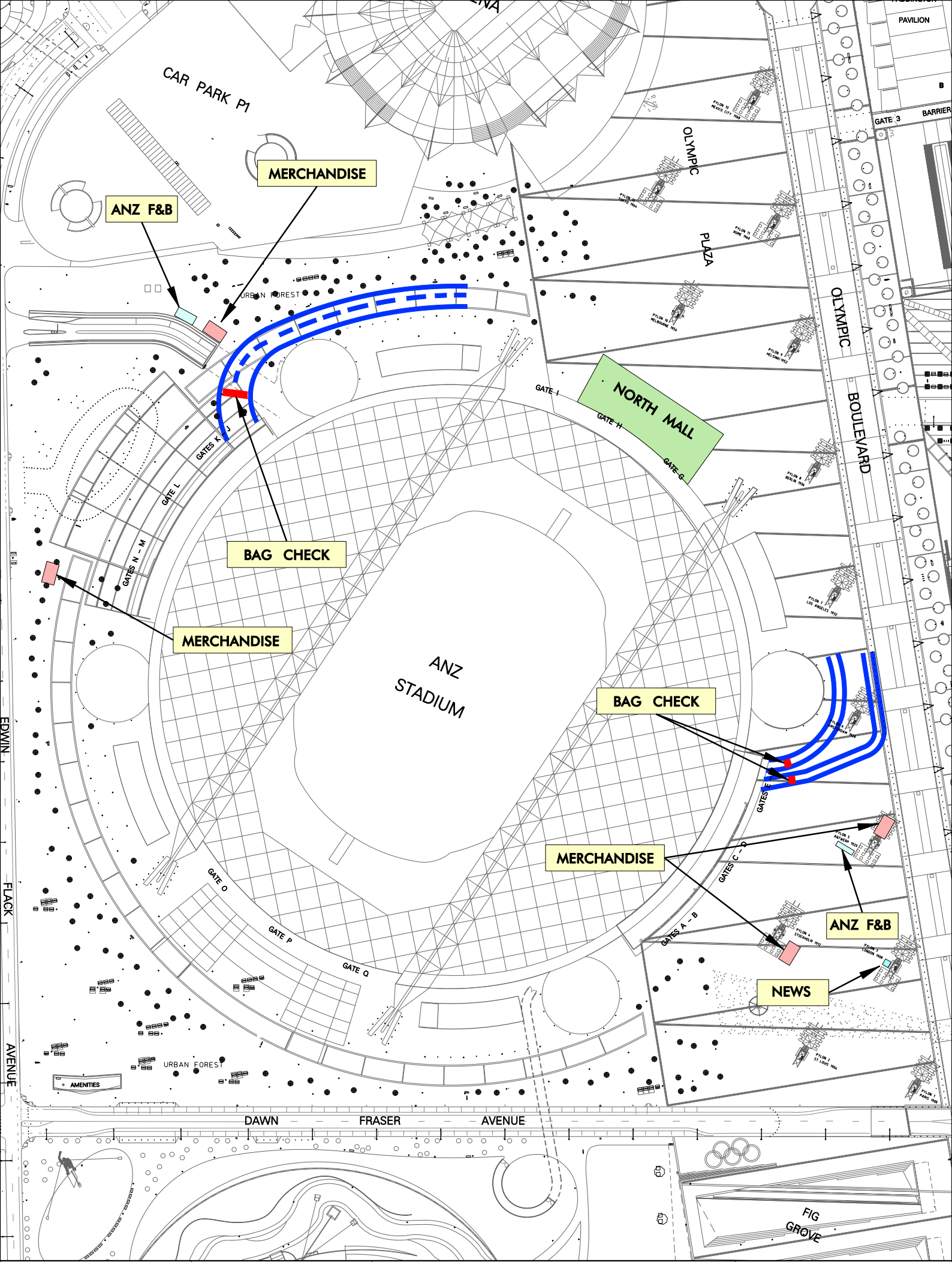
DISTRIBUTION CONTROL
 THIS DRAWING REMAINS THE PROPERTY OF THE SYDNEY OLYMPIC PARK AUTHORITY EXCEPT AS PROVIDED IN THE CONDITIONS OF ISSUE. IT SHALL NOT BE COPIED IN WHOLE OR IN PART NOR RE-ISSUED IN ANY FORM TO ANY OTHER PARTY WITHOUT THE WRITTEN APPROVAL OF THE SYDNEY OLYMPIC PARK AUTHORITY.

SYDNEY OLYMPIC PARK
FFA GAMES

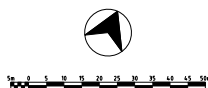


DRG. NO. : 001-N-G-0737 REV. A
SCALE : AS PER SCALE BAR

PLT DATE: 19/04/2010



PRODUCT OF SOPA CADD UNIT (02) 9714-7875



SYDNEY OLYMPIC PARK AUTHORITY

7 FIGTREE DRIVE SYDNEY OLYMPIC PARK NSW 2127
PH (02) 9714 7300 FAX (02) 9714 7818

DISTRIBUTION CONTROL

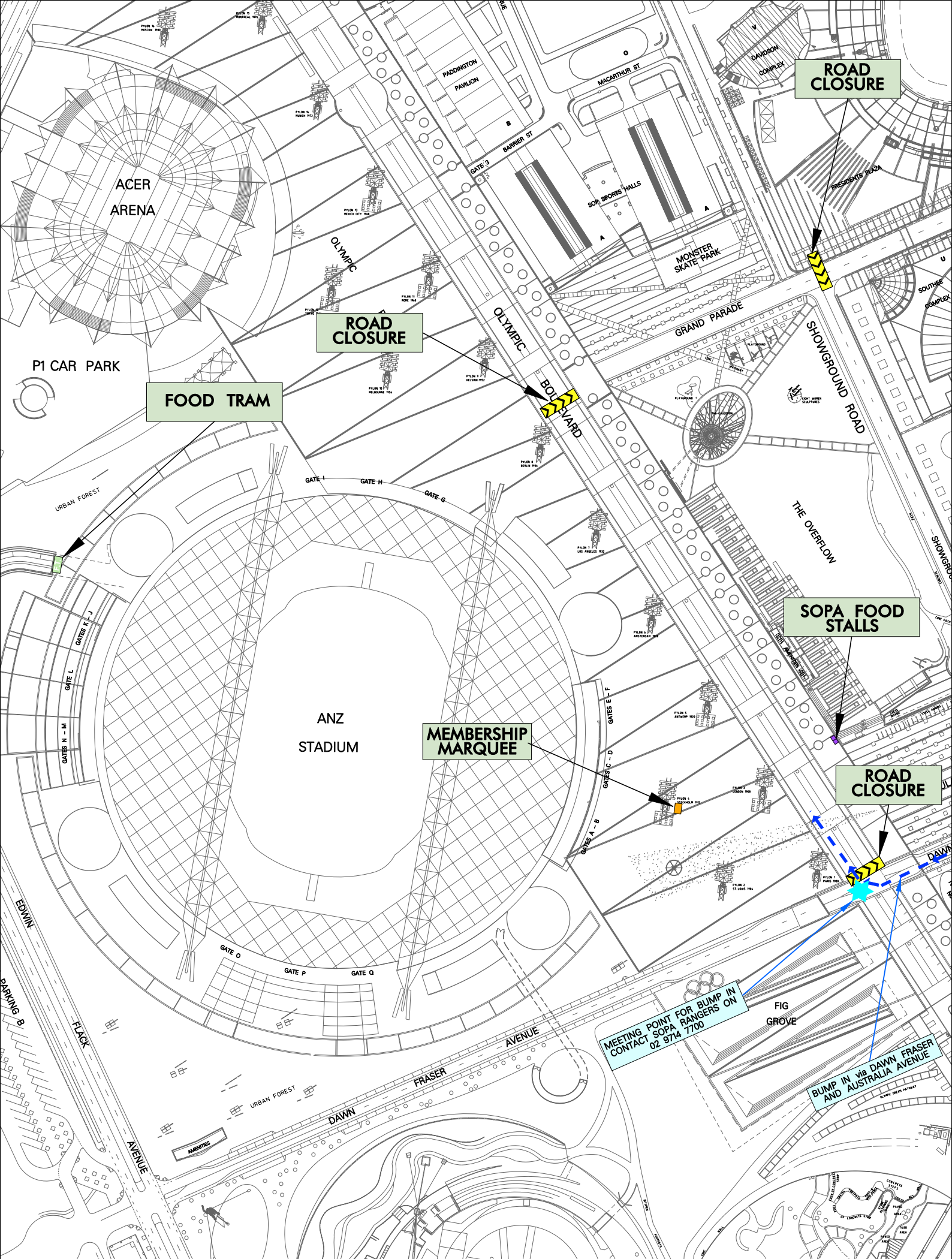
THIS DRAWING REMAINS THE PROPERTY OF THE SYDNEY OLYMPIC PARK AUTHORITY. EXCEPT AS PROVIDED IN THE CONDITIONS OF ISSUE, IT SHALL NOT BE COPIED IN WHOLE OR IN PART NOR RE-ISSUED IN ANY FORM TO ANY OTHER PARTY WITHOUT THE WRITTEN APPROVAL OF THE SYDNEY OLYMPIC PARK AUTHORITY.

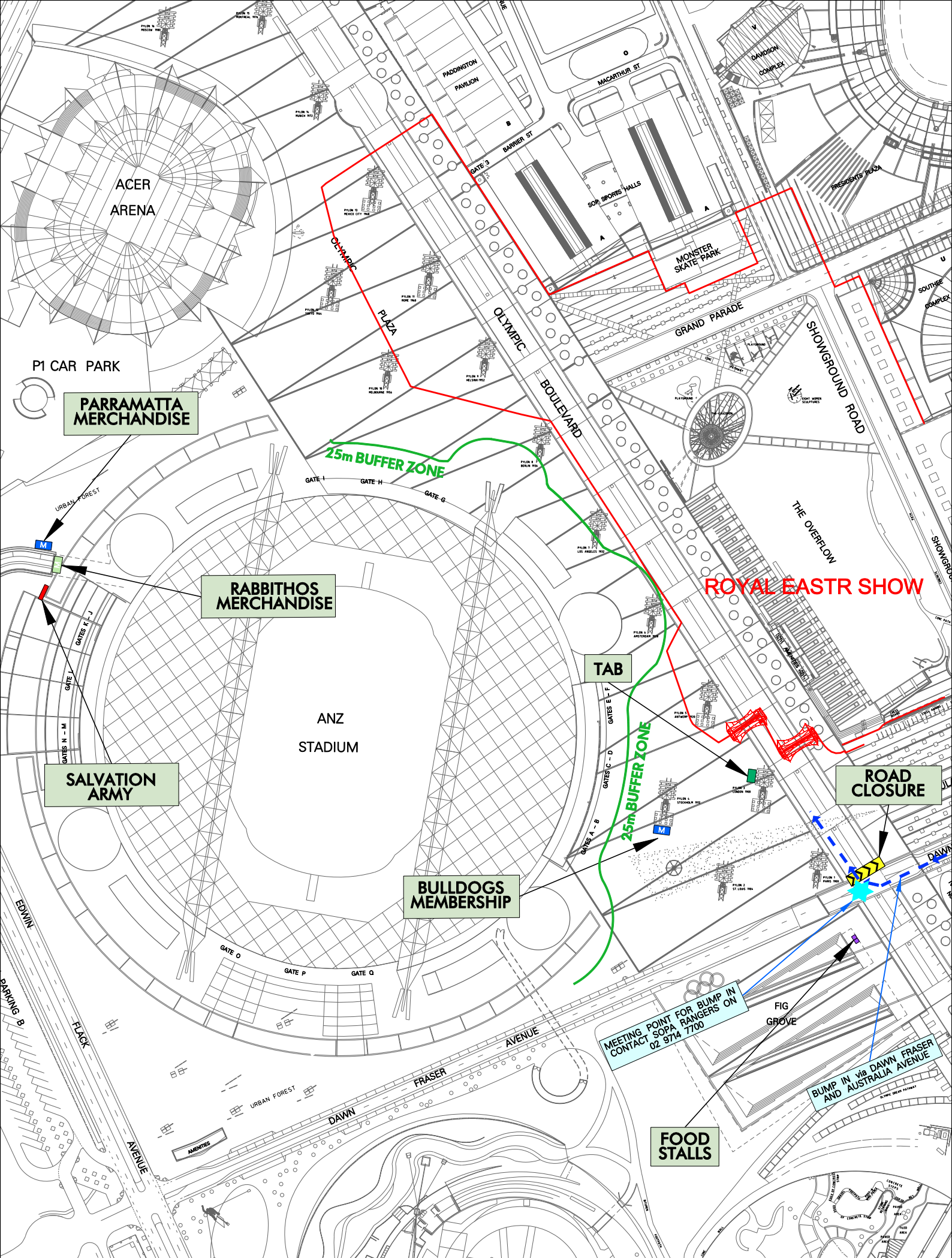
SYDNEY OLYMPIC PARK CONCERT # 1

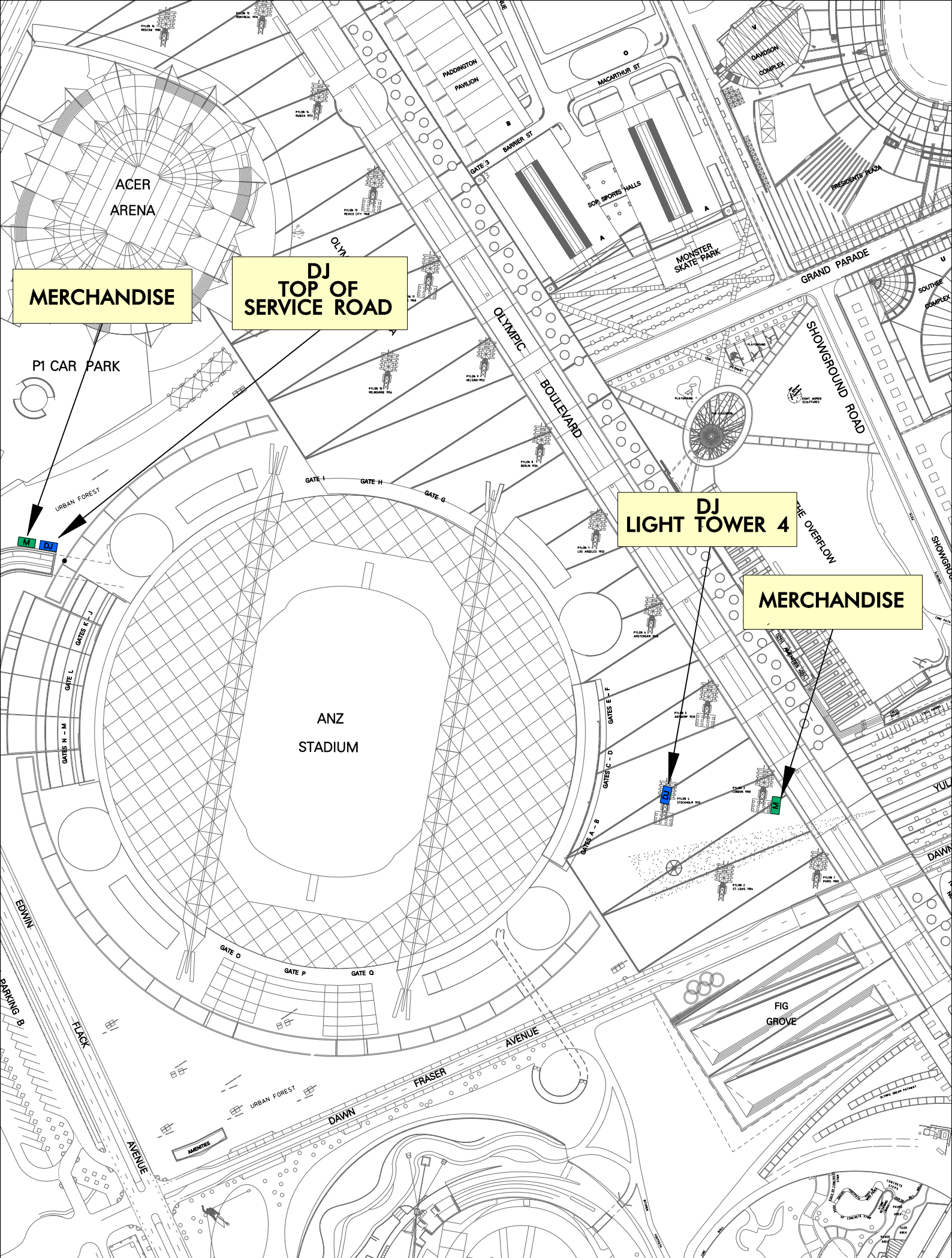


DRG. NO. : 001-N-G-0736 REV. a
SCALE: AS PER SCALE BAR

PLT DATE: 19/04/2010







MERCHANDISE

**DJ
TOP OF
SERVICE ROAD**

**DJ
LIGHT TOWER 4**

MERCHANDISE

**ANZ
STADIUM**

**SYDNEY OLYMPIC PARK
CRICKET SET-UP**

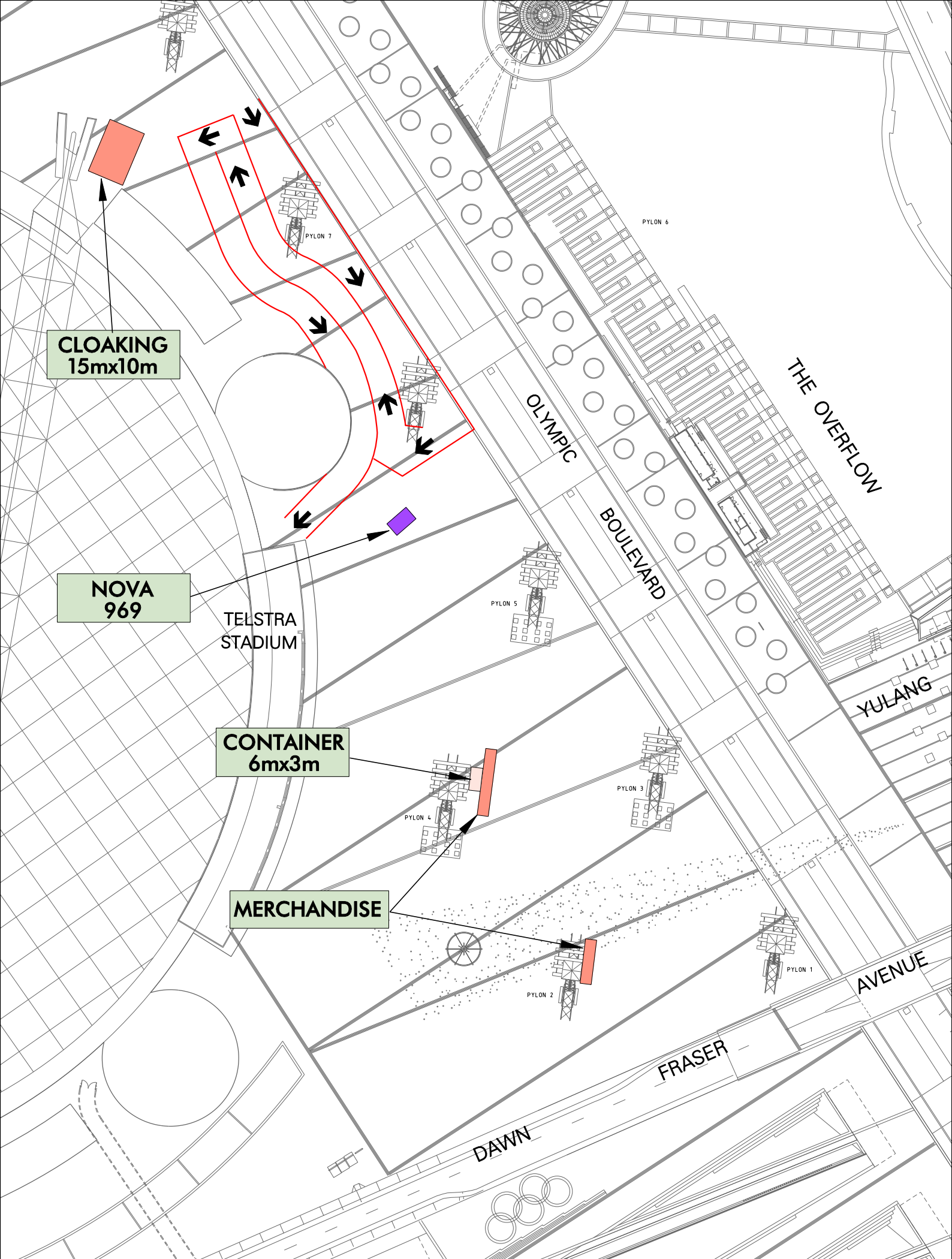


**DRG. NO. : 001-N-G-0733 REV. A
SCALE: AS PER SCALE BAR**

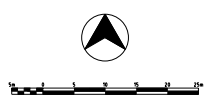
PLOT DATE: 16/04/2010

SYDNEY OLYMPIC PARK AUTHORITY
7 FIGTREE DRIVE SYDNEY OLYMPIC PARK NSW 2127
PH (02) 9714 7300 FAX (02) 9714 7818

DISTRIBUTION CONTROL
THIS DRAWING REMAINS THE PROPERTY OF THE SYDNEY OLYMPIC PARK AUTHORITY EXCEPT AS PROVIDED IN THE CONDITIONS OF ISSUE. IT SHALL NOT BE COPIED IN WHOLE OR IN PART NOR RE-ISSUED IN ANY FORM TO ANY OTHER PARTY WITHOUT THE WRITTEN APPROVAL OF THE SYDNEY OLYMPIC PARK AUTHORITY.



PRODUCT OF SOPA CADD UNIT (02) 9714-7875



SYDNEY OLYMPIC PARK AUTHORITY
7 FIGTREE DRIVE SYDNEY OLYMPIC PARK NSW 2127
PH (02) 9714 7300 FAX (02) 9714 7818

DISTRIBUTION CONTROL
THIS DRAWING REMAINS THE PROPERTY OF THE SYDNEY OLYMPIC PARK AUTHORITY EXCEPT AS PROVIDED IN THE CONDITIONS OF ISSUE. IT SHALL NOT BE COPIED IN WHOLE OR IN PART NOR RE-ISSUED IN ANY FORM TO ANY OTHER PARTY WITHOUT THE WRITTEN APPROVAL OF THE SYDNEY OLYMPIC PARK AUTHORITY.

SYDNEY OLYMPIC PARK CONCERT - EAST



DRG. NO. : 001-N-G-0741 REV. A
SCALE: AS PER SCALE BAR

PLOT DATE: 19/04/2010