

LANDSCAPE CONCEPT

Proposed Site YP Sydney Olympic Park

LANDSCAPE PROPOSAL

The landscape planting strategy looks to incorporate very hardy native and exoctic plantings that help capture carbon, pollutants and transpire. The addition of soil and foliage/flowers will give the space a greener output than it's current hardstand condition.



IMAGE: ATLAS ARCHITECTURE

NOT FOR CONSTRUCTION

**SITEDESIGN
+STUDIOS**

SITEDESIGN + STUDIOS

Studio – South Coast
0417 342 440
PO Box 3079, Austinmer, 2515
johnny@sdstudios.com.au
www.sdstudios.com.au

CLIENT

FDC Construction & Fit Out (NSW) Pty Ltd
22-24 Junction Street
Forest Lodge, NSW, 2037

SITE

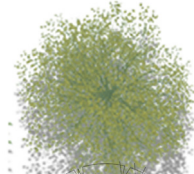
Proposed Site YP Sydney Olympic Park

COVER PAGE

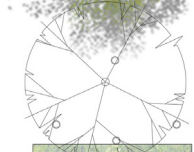
12/09/2017

REV B

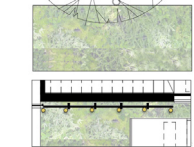
LEGEND



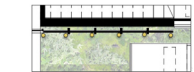
New feature tree - Ref Plant Schedule



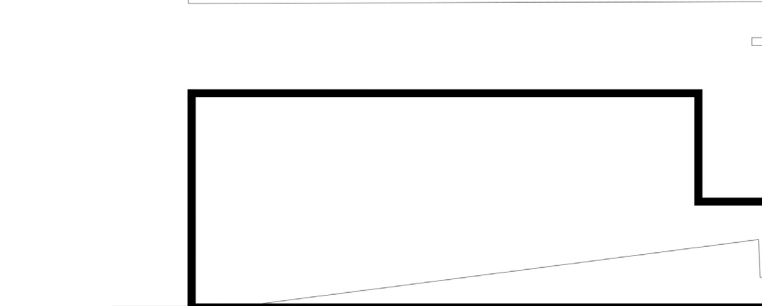
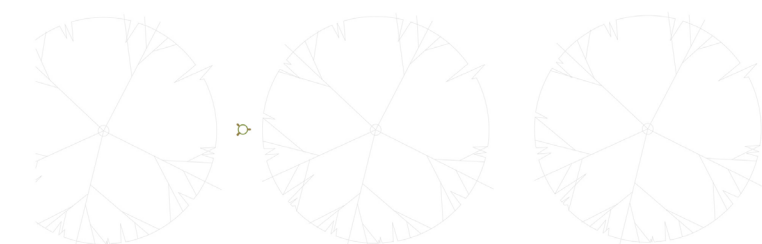
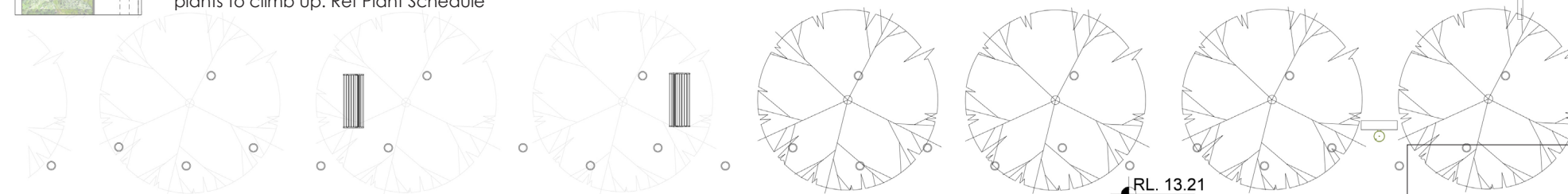
Existing trees to remain and be protected during construction



Mass planting, Ref Plant Schedule



4mm 316 Grade Stainless steel Wire for plants to climb up. Ref Plant Schedule



NOT FOR CONSTRUCTION

SITEDESIGN
+STUDIOS

SITEDESIGN + STUDIOS

Studio – South Coast
0417 342 440
PO Box 3079, Austinmer, 2515
johnny@sdstudios.com.au
www.sdstudios.com.au

CLIENT

FDC Construction & Fit Out (NSW) Pty Ltd
22-24 Junction Street
Forest Lodge, NSW, 2037



1:200@A3

SITE

Proposed Site YP Sydney Olympic Park
GROUND FLOOR LANDSCAPE PLAN

12/09/2017

REV B

Mix of MYO-PAR, CAS-COU, POA-ESK

Mix of MYO-PAR, CAS-COU, POA-ESK

Ulmus parvifolia 'Frosty'
feature tree. Tree planting to NATSPEC guidelines.

Plants to climb up fixed wire vertically. Species PAN-PAN, CLE-ARI

Mix of MYO-PAR, ZOY-TEN, ASP-AUS, BLE-SIL, SAN-TRI

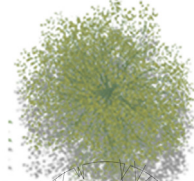
Mix of RHA-EXC, ASP-AUS, BLE-SIL, SAN-TRI, VIO-HED

Mix of MYO-PAR, ZOY-TEN, ASP-AUS, BLE-SIL, SAN-TRI

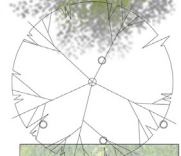
Plants to climb up fixed wire vertically. Species CIS-ANT

Planter boxes on existing stairs. Mix of RHA-EXC, SAN-TRI, VIO-HED

LEGEND



New feature tree - Ref Plant Schedule



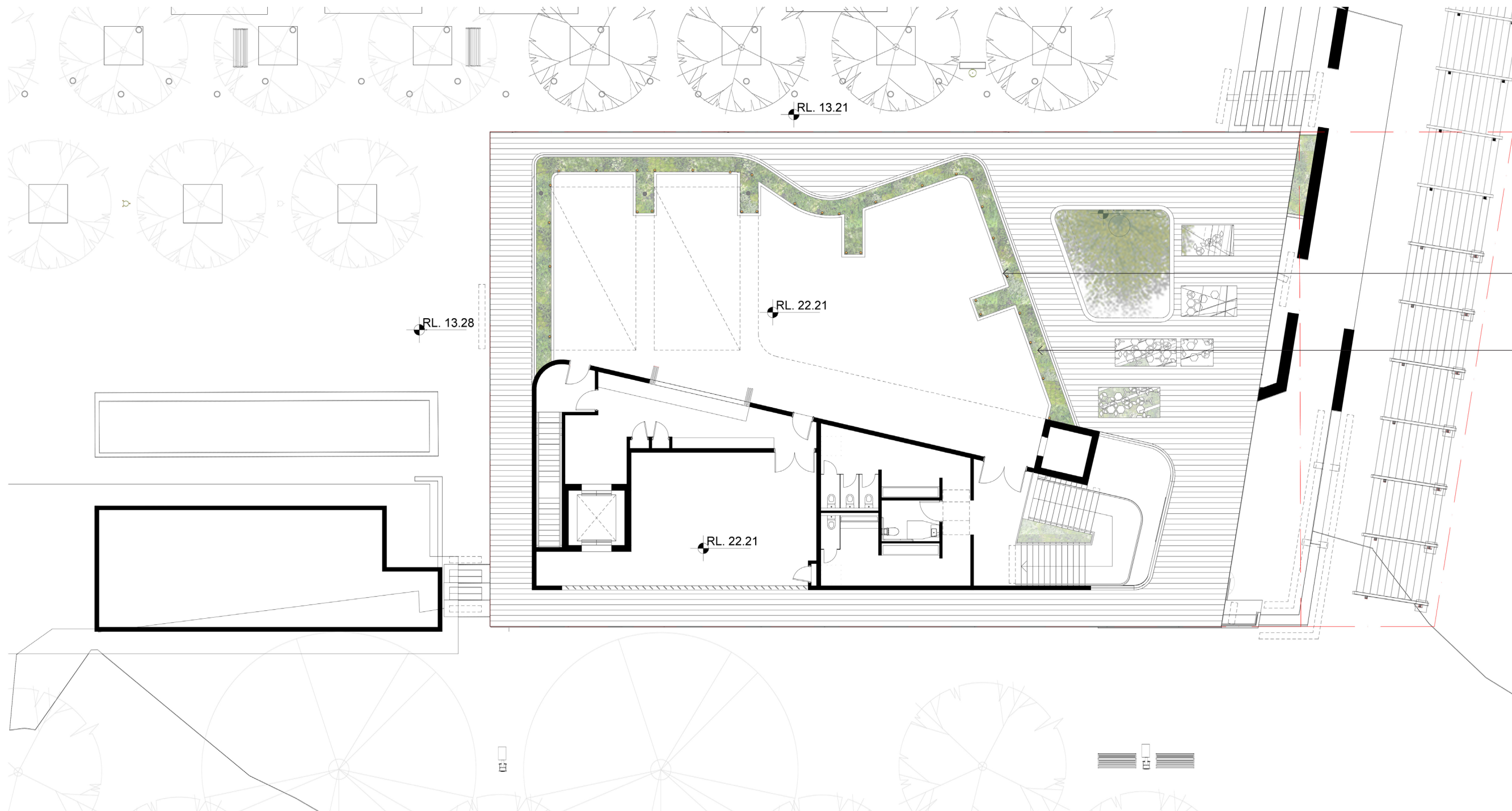
Existing trees to remain and be protected during construction



Mass planting. Ref Plant Schedule



Plants to spill over wall. Ref Plant Schedule



Spilling plants to edge and lush flowing grasses to be mass plated in 750mm high planter bed.

Mass Planting.
Mix of PEN-ALO, POA-ESK,
MYO-PAR, KEN-RUB

NOT FOR CONSTRUCTION

**SITEDESIGN
+STUDIOS**

SITEDESIGN + STUDIOS

Studio – South Coast
0417 342 440
PO Box 3079, Austinmer, 2515
johnny@sdstudios.com.au
www.sdstudios.com.au

CLIENT

FDC Construction & Fit Out (NSW) Pty Ltd
22-24 Junction Street
Forest Lodge, NSW, 2037



1:200@A3

SITE

Proposed Site YP Sydney Olympic Park

ROOFTOP LANDSCAPE PLAN

12/09/2017

REV B

INDICATIVE PLANT SCHEDULE

CODE	BOTANICAL NAME	COMMON NAME	mature height (metre)	mature width (metre)	Pot Sizes	densities (p/m²)
TREES & LARGER SHRUBS						
ACE-CAM	<i>Acer negundo</i> 'Sensation'	Box Elder	7m	6m	400L	AS SHOWN
SHRUBS						
RHA-EXC	<i>Rhapis excelsa</i>	Lady Palm	2.0m	0.8m	200mm	2
GROUNDCOVERS / GRASSES / SHRUBS						
KEN-RUN	<i>Kennedia rubicunda</i>	Dusky coral pea	0.3m	1.5m	140mm	AS SHOWN
PEN-ALO	<i>Pennisetum alopecuroides</i> 'Nafray'		0.6m	0.6m	140mm	4
MYO-PAR	<i>Myoporum parvifolium</i>	Creeping boobialla	0.2m	1.0m	140mm	AS SHOWN
POA-ESK	<i>Poa labillardieri</i> 'Eskdale'	Eskdale Poa	0.6m	0.5m	140mm	4
SAN-TRI	<i>Sansevieria trifasciata</i>	Mother in Laws tongue	0.6m	0.6m	200mm	4
VIO-HED	<i>Viola hederacea</i>	Native Violet	0.1m	0.5m	140mm	4
ZOY-TEN	<i>Zoysia tenuifolia</i>	Zoysia	0.2m	0.2m	140mm	11
CLIMBERS						
BLE - SIL	<i>Pandorea pandorana</i>	Wonga Wonga Vine	0.6m	0.6m	200mm	AS SHOWN
CIS-ANT	<i>Cissus antarctica</i>	Kangaroo Vine	1.5m	1.5m	140mm	AS SHOWN
CLE-ARI	<i>Clematis aristata</i>	Goat's Beard	0.6m	0.6m	200mm	AS SHOWN
FERNS						
ASP-AUS	<i>Asplenium australasicum</i>	Birds Nest Fern	0.6m	0.6m	200mm	AS SHOWN
BLE - SIL	<i>Blechnum</i> 'silver lady'	Hard Fern	0.6m	0.6m	200mm	AS SHOWN



Acer negundo 'Sensation'



Rhapis excelsa



Casuarina glauca 'Cousin It'



Kennedia rubicunda



Myoporum parvifolium



Pennisetum alopecuroides'Nafray'



Poa labillardieri 'Eskdale'



Sansevieria trifasciata



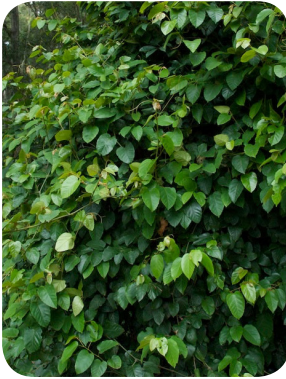
Viola hederacea



Zoysia tenuifolia



Pandorea pandorana



Cissus antarctica



Clematis aristata



Asplenium australasicum



Blechnum 'silver lady'

MAINTENANCE PROGRAM

MONTH	MOWING EDGING BLOWING	FERTILISING (SEASOL)	CHECK IRRIGATION	HAND WEED REMOVAL	PRUNING	WEED SPRAYING	WATERING/ IRRIGATION	PLANT REPLACEMENT IF REQUIRED
DEC	W	M	M	W	F	M	D	W
JAN	W	M	M	W	F	M	D	W
FEB	W	M	M	W	F	M	D	W
MAR	F	M	M	F	M	M	D	W
APR	F	N/A	M	F	M	M	D	W
MAY	F	N/A	M	M	M	M	D	W
JUNE	M	N/A	M	M	N/A	N/A	2ND D	W
JULY	M	N/A	M	M	N/A	N/A	2ND D	W
AUG	M	N/A	M	M	N/A	N/A	2ND D	W
SEP	M	M	M	M	N/A	N/A	2ND D	W
OCT	F	F	M	F	M	M	D	W
NOV	F	F	M	F	M	M	D	W
PLANTING ESTABLISHMENT PERIOD - 12 MONTHS LANDSCAPE MATERIAL ESTABLISHMENT - 12 MONTHS KEY D-DAILY, W-WEEKLY, F-FORTNIGHT, M-MONTHLY, 2ND DAY.								

GENERAL NOTES

1. All surface and sub-surface drainage requirements are to be to Engineers details.
2. All dimensions should be checked on-site prior to commencing construction.
3. Contractors shall verify the location of all site features prior to commencing works.
4. Soil testing has not been undertaken as part of the preparation of this design; Contractors shall determine the need for soil testing prior to any planting works.
5. Contractors are to contact **DIAL BEFORE YOU DIG ON 1100** prior to any commencing of works.
6. Vehicular pavement, pool and built structure details will be to engineer's detail.
7. This plan is to be read in conjunction with the architectural and engineering drawings

LANDSCAPE SPECIFICATION

1. GENERAL

- 1.1 The Contractor shall familiarise themselves with the site prior to tender.
- 1.2 The Contractor will be held responsible for any damage to utility services, pipes, building structures, paving surfaces, fencing, footways, kerbs, roads and existing plant material.
- 1.3 The site is to be left in a clean and tidy condition at the completion of works to the satisfaction of the Superintendent.
- 1.4 No work involving an extra shall be undertaken unless approval is first obtained from the Superintendent.
- 1.5 No substitute of material shall be made unless approval is given by the Superintendent.
- 1.6 The Contractor shall continuously maintain all areas of the Contract during progress of the works specified.

2. SITE PREPARATION

- 2.1 All garden beds are are to be free of stones larger than 100mm diameter, cement, rubbish and any other foreign matter that could hinder plant growth.
3. MASS PLANTED AREAS
- 3.1 Once clear Grass and debris, sub-grade should be cultivated to a minimum depth of 300mm incorporating 'Dynamic Lifter' or equivalent at the manufacturers recommended rates.
- 3.2 Weeds shall be controlled by hand removal techniques.

4. PLANTING

- 4.1 All plant material is to be hardened off, disease and insect free and true to species, type and variety. Plants are to be well grown but not root bound and shall comply with Natspec guidelines.
- 4.2 All plants are to be removed from their containers prior to planting with as little disturbance to the root system as possible.
- 4.3 Planting shall not be carried out in dry soil or extreme weather conditions.
- 4.4 Plants should be planted at the same depth as the plants were in the containers and allow for a shallow saucer of soil to be formed around the plant to aid the penetration of water.
- 4.5 All plant material should be watered thoroughly immediately after planting.
- 4.6 The Contractor shall be responsible for the failure of plants during construction, except for acts of vandalism.
- 4.7 Labels shall be removed entirely from the plants.
- 4.8 Tree to be planted as per NATSPEC within an urban space

5. STAKING

- 5.1 Ties should be firmly attached to the stakes, in a way to avoid damage to the stem while allowing a small degreeof movement.

6. IRRIGATION

- 6.1 Irrigation to be subsurface dripline LDPE pipe
- 6.2 All water for irrigation to be non potable water.
- 6.3 Irrigation Design to specialist detail

7. MULCH

- 7.1 Mulch for all mass planted beds shall be 'Forest Fines' mulch as supplied by A.N.L

8. SOIL MIXES

- 8.1 Soil mix for mass planting to be 'Planter Box Mix' as supplied by A.N.L.

NOT FOR CONSTRUCTION



SITEDESIGN + STUDIOS

Studio – South Coast
0417 342 440
PO Box 3079, Austinmer, 2515
johnny@sdstudios.com.au
www.sdstudios.com.au

CLIENT
FDC Construction & Fit Out (NSW) Pty Ltd
22-24 Junction Street
Forest Lodge, NSW,2037

SITE
Proposed Site YP Sydney Olympic Park
PLANTING DETAILS AND SPECIFICATION

12/09/2017

REV B