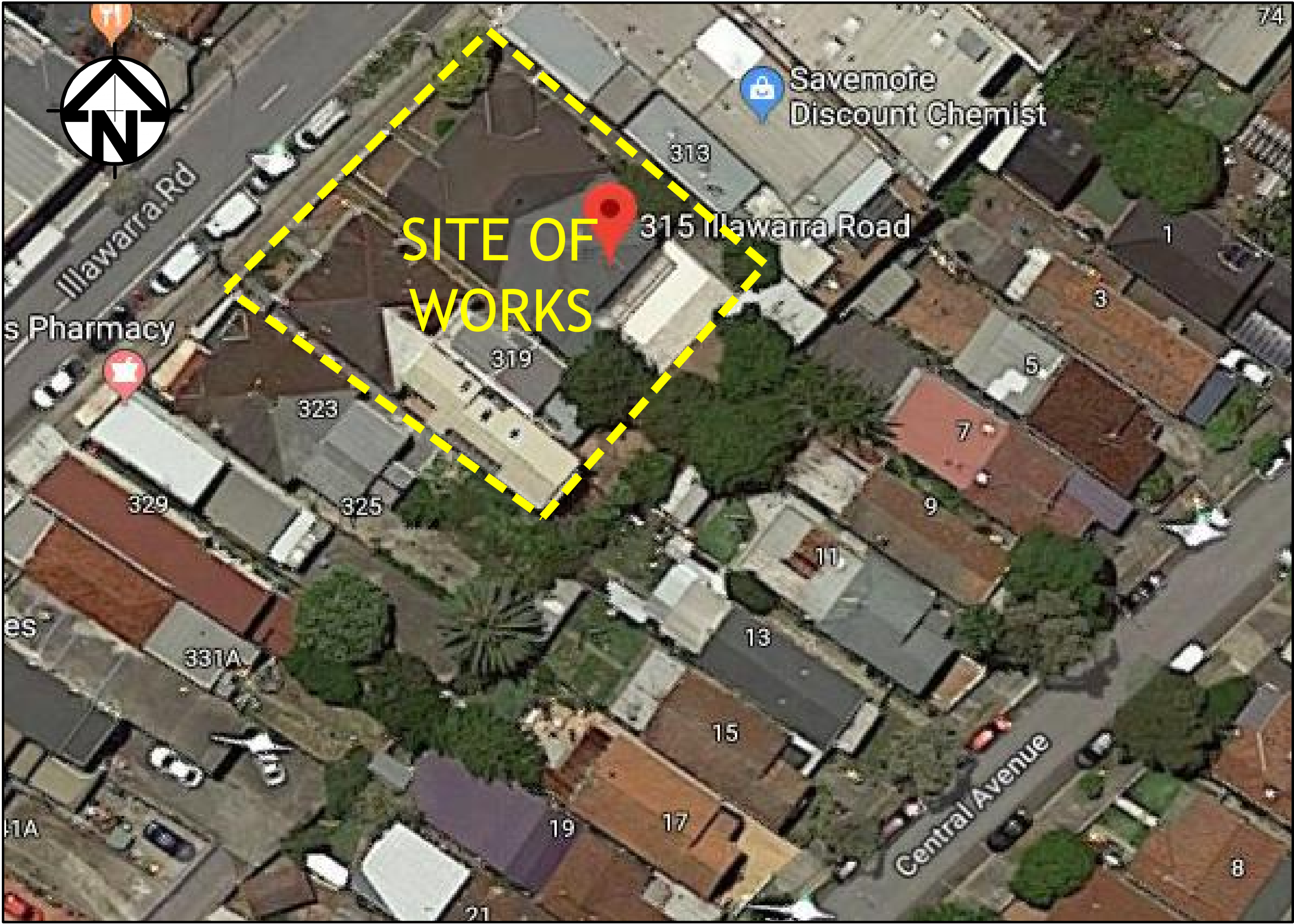




PROPOSED MIXED-USE DEVELOPMENT 315-321 ILLAWARRA ROAD, MARRICKVILLE STORMWATER CONCEPT DESIGN



LOCALITY PLAN
NOT TO SCALE
COPYRIGHT OF GOOGLE MAP, VERSION 3

DRAWING REGISTER			
SHEET No.	No.	TITLE	REV
1	SW100	COVER SHEET	B
2	SW200	STORMWATER CONCEPT DESIGN - BASEMENT 02 PLAN	B
3	SW201	STORMWATER CONCEPT DESIGN - BASEMENT 01 PLAN	B
4	SW202	STORMWATER CONCEPT DESIGN - GROUND FLOOR PLAN	B
5	SW203	STORMWATER CONCEPT DESIGN - ROOF PLAN	B
6	SW300	STORMWATER CONCEPT DESIGN - DETAILS SHEET - SHEET 1 OF 2	B
7	SW301	STORMWATER CONCEPT DESIGN - DETAILS SHEET - SHEET 2 OF 2	B
8	SW400	EROSION AND SEDIMENT CONTROL - PLAN AND DETAILS	B
9	SW500	STORMWATER CONCEPT DESIGN - MUSIC CATCHMENT PLAN	B



PREPARED BY:
SGC Consulting Engineers
Suite 5.03, Level 5
156 Pacific Highway
St Leonards, NSW 2065
T: +61 2 8883 4239
Email: office@sgce.com.au
Web: www.sgce.com.au

ARCHITECT:

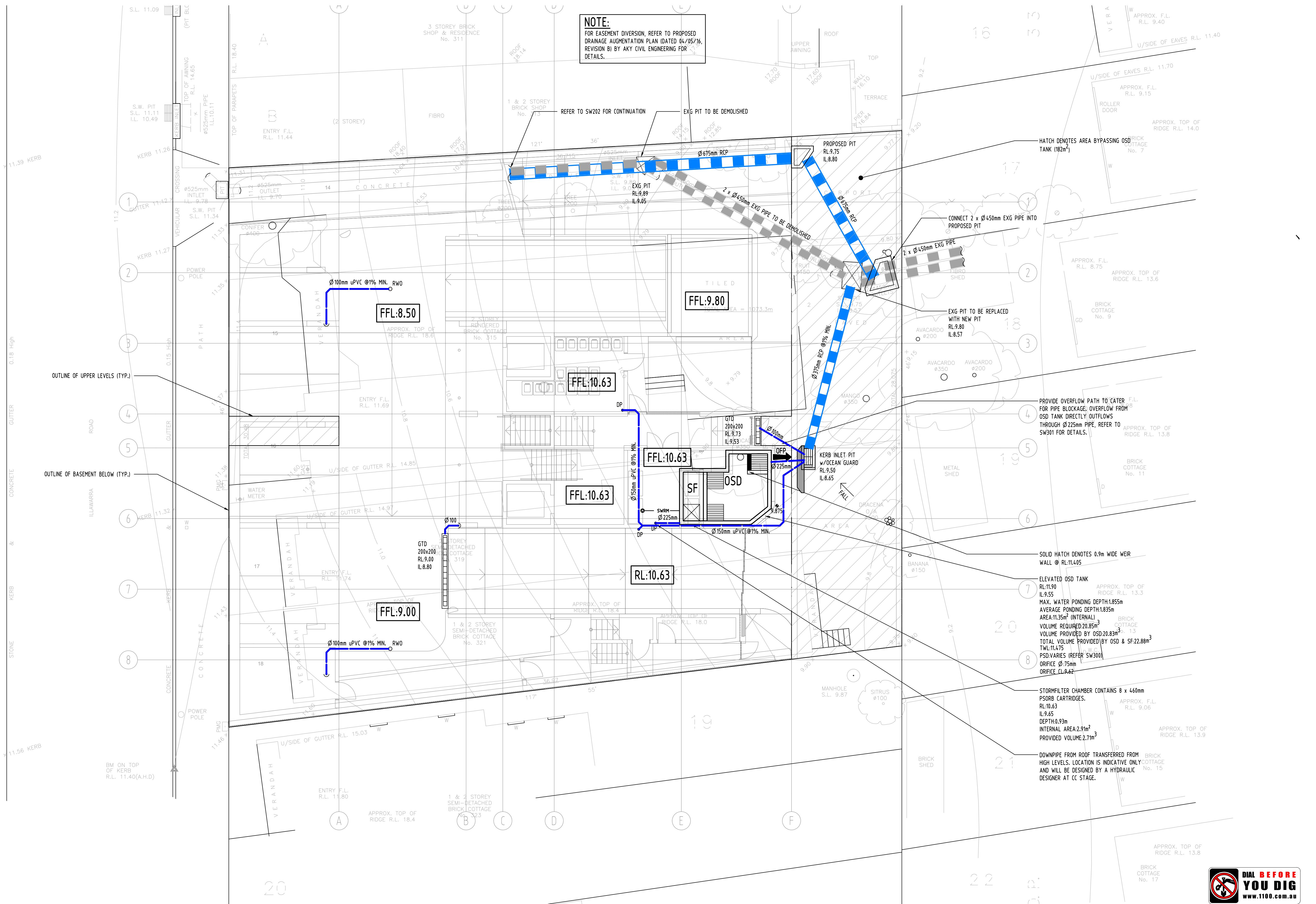


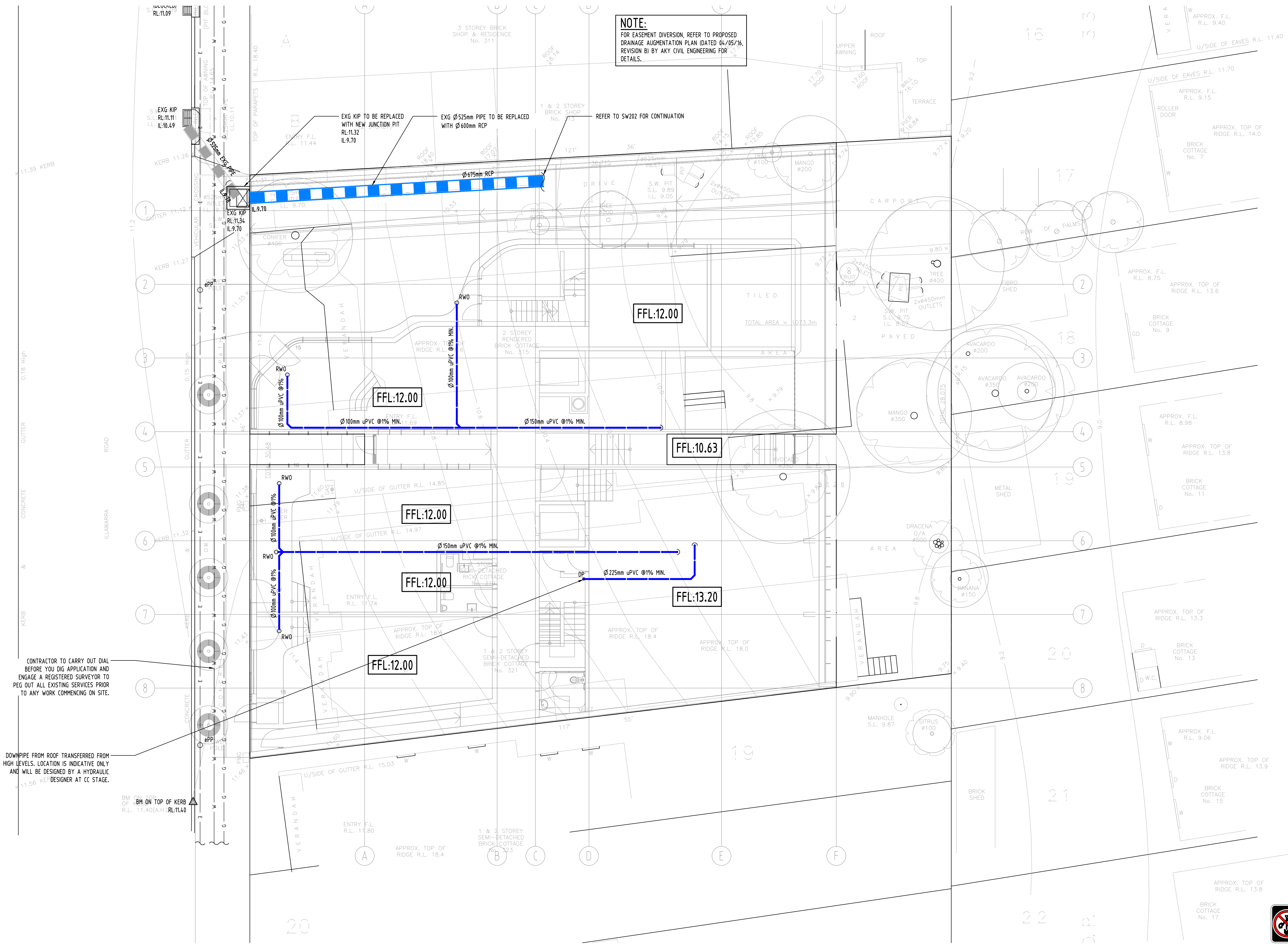
CLIENT :

VINH & SAU



Drawing Status	FOR APPROVAL		
NOT TO BE USED FOR CONSTRUCTION PURPOSES			
Drawing Title	STORMWATER CONCEPT DESIGN BASEMENT 02 PLAN		
Project No	Drawing No	Revision No	
20190095	SW200	B	





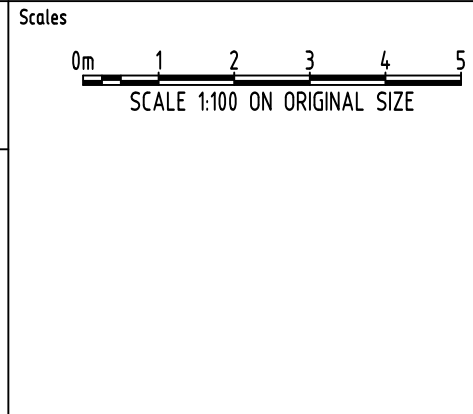
Reference Coordination Drawing				
Discipline	Drawing Title and Number	Date	Rev.	
ARCH				
ARCH				
STRUCT				
MECH				
ELEC				
HYD				
FIRE				
LANDS				
CIVIL				
SURVEY				

Issuer internal sequence and revision history				
Issue	Last revision title	by	Date	Status
1	PRELIMINARY	FZ	15.07.2019	1
2	ISSUE FOR DA	FZ	10.10.2019	2
3	ISSUE FOR DA	ZW	10.06.2020	2
4	ISSUE FOR DA			
5	CONSTRUCTION			
6	OTHER			

ENGINEERS AUSTRALIA
Chartered Professional Engineer
MEMBER

QUALITY CONTROL			
DRAWN	ZW	DATE	10.06.20
CHECKED	SH	DATE	10.06.20
DESIGNED	ZW	DATE	10.06.20
VERIFIED	SH	DATE	10.06.20
APPROVED	SH	DATE	10.06.20

WARNING: THE DESIGNS, DRAWINGS, SPECIFICATIONS AND THE COPYRIGHT HEREIN REMAIN THE SOLE INTELLECTUAL PROPERTY OF SGC CONSULTANTS PTY LTD AND MUST NOT BE USED, COPIED, ALTERED OR REPRODUCED WHOLLY OR IN PART IN ANY FORM WITHOUT THE WRITTEN CONSENT OF SGC CONSULTANTS PTY LTD



CLIENT
VINH & SAU

ARCHITECT
BENSON
McCORMACK
ARCHITECTURE



Suite 5.03, Level 5,
156 PACIFIC HIGHWAY
ST LEONARDS, NSW 2065
T: +61 2 8883 4239
Email: office@sgce.com.au
Web: www.sgce.com.au

A.B.N. 21 118 222 530

PROJECT
PROPOSED
MIXED-USE DEVELOPMENT
315-321 ILLAWARRA ROAD, MARRICKVILLE

Grid	Datum	Sheet	Scale (at original size)
-	A.H.D.	4 of 9	1:100 @ A1

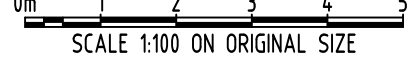
Drawing Status		
FOR APPROVAL NOT TO BE USED FOR CONSTRUCTION PURPOSES		
Drawing Title		
STORMWATER CONCEPT DESIGN GROUND FLOOR PLAN		
Project No	Drawing No	Revision No
20190095	SW202	B



Reference Coordination Drawing			
Discipline	Drawing Title and Number	Date	Rev.
ARCH			
ARCH			
STRUCT			
MECH			
ELEC			
HYD			
FIRE			
LANDS			
CIVIL			
SURVEY			


 ENGINEERS AUSTRALIA Chartered Professional Engineer MEMBER	QUALITY CONTROL			
	DRAWN	ZW	DATE	10.06.20
	CHECKED	SH	DATE	10.06.20
	DESIGNED	ZW	DATE	10.06.20
	VERIFIED	SH	DATE	10.06.20
	APPROVED	SH	DATE	10.06.20

DIMENSIONS NOT SHOWN TO BE CHECKED ON SITE. DO NOT SCALE OF THIS DRAWING. POSTING OF AUTHORITIES MARKS AND/OR EXISTING SERVICES ARE TO BE CHECKED PRIOR TO COMMENCEMENT OF WORK. REPORT ANY DISCREPANCIES TO THE CONSULTING ENGINEER FOR DESIGN/CLARIFICATION BEFORE PROCEEDING WITH THE WORK. THIS DRAWING IS TO BE READ IN CONJUNCTION WITH THE SPECIFICATIONS AND OTHER CONSULTANTS' DRAWINGS.	WARNING: THE DESIGNS, DRAWINGS, SPECIFICATIONS AND THE COPYRIGHT HEREIN REMAIN THE SOLE INTELLECTUAL PROPERTY OF S&G CONSULTANTS PTY LTD AND MUST NOT BE USED, COPIED, ALTERED OR REPRODUCED WHOLLY OR IN PART IN ANY FORM WITHOUT THE WRITTEN CONSENT OF S&G CONSULTANTS PTY LTD			

Scales				
				
SCALE 1:100 ON ORIGINAL SIZE				

CLIENT				
VINH & SAU				

ARCHITECT				
				

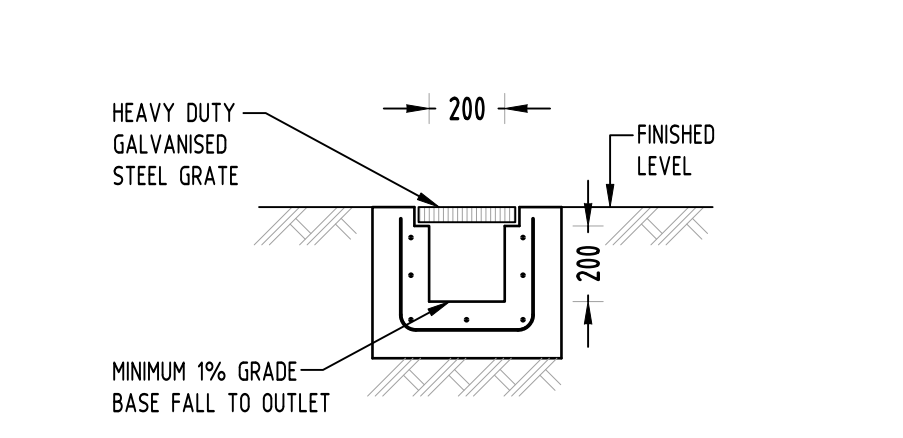
ARCHITECT				
				

				
Suite 5.03, Level 5, 156 PACIFIC HIGHWAY ST LEONARDS, NSW 2065 T: +61 2 8883 4239 Email: office@sgce.com.au Web: www.sgce.com.au				
A.B.N. 21 118 222 530				

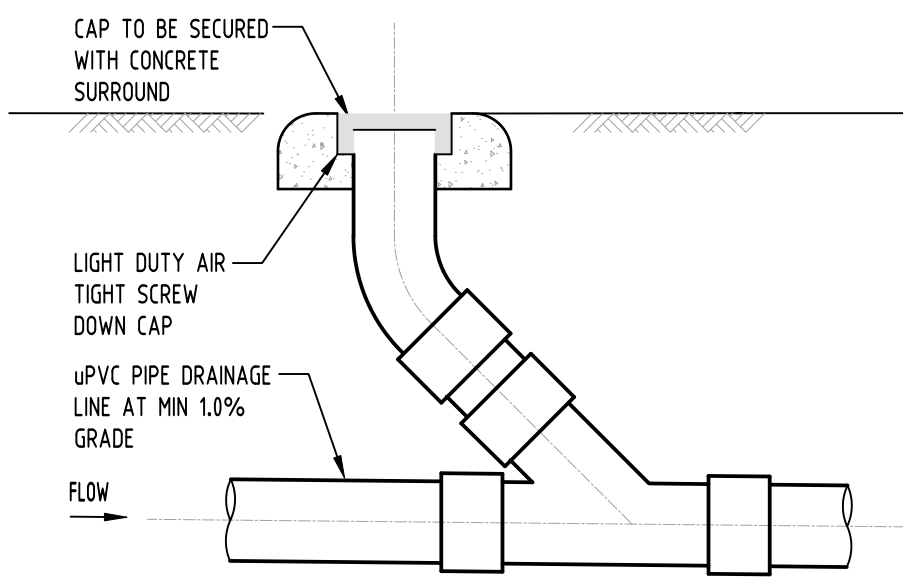
PROJECT				
PROPOSED MIXED-USE DEVELOPMENT				
315-321 ILLAWARRA ROAD, MARRICKVILLE				
Grid	Datum	Sheet	Scale (at original size)	
-	A.H.D.	5 of 9	1:100 @ A1	

Drawing Status			FOR APPROVAL		
			NOT TO BE USED FOR CONSTRUCTION PURPOSES		
Drawing Title			STORMWATER CONCEPT DESIGN ROOF PLAN		
Project No	Drawing No	Revision No			
20190095	SW203	B			

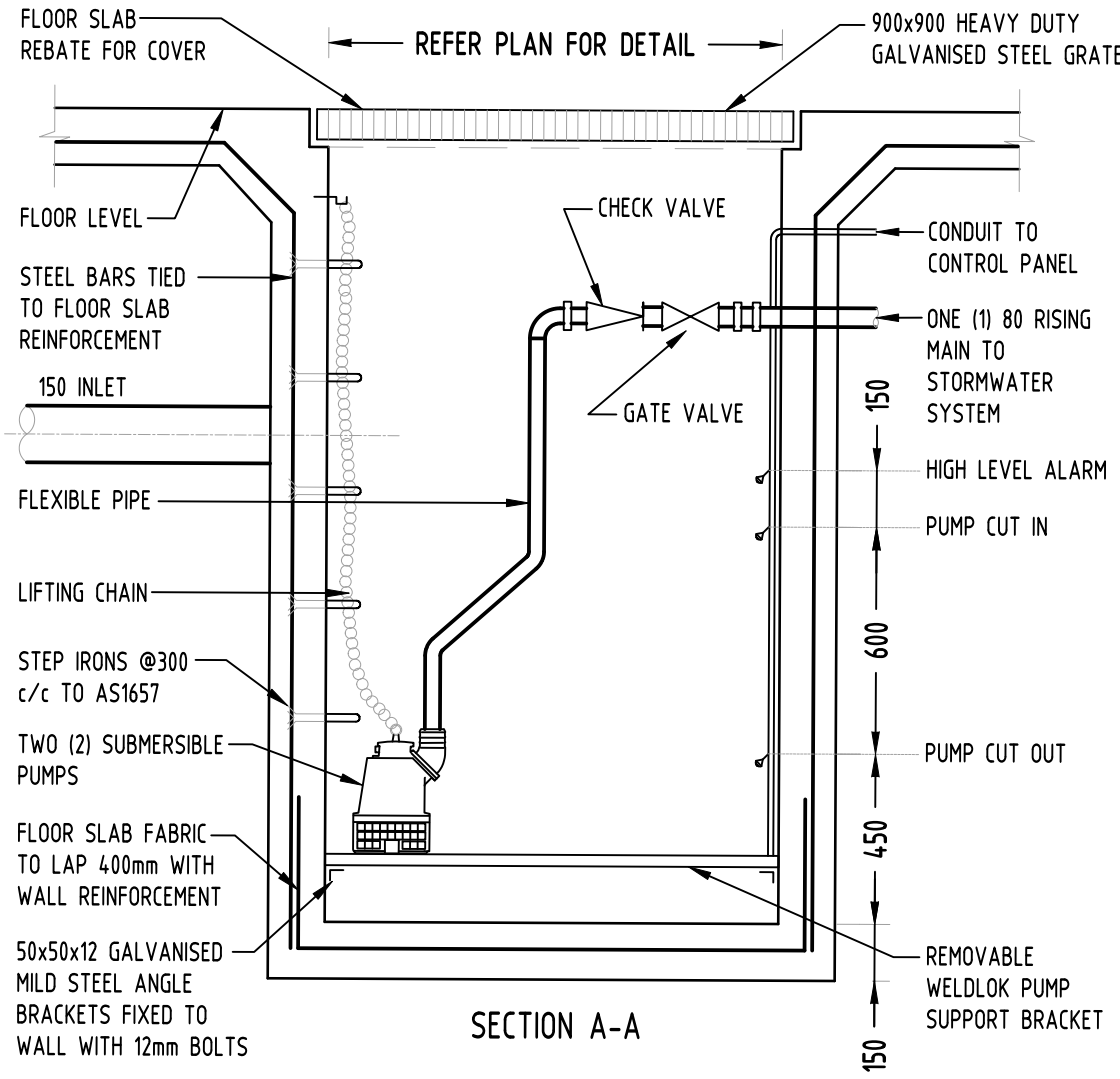




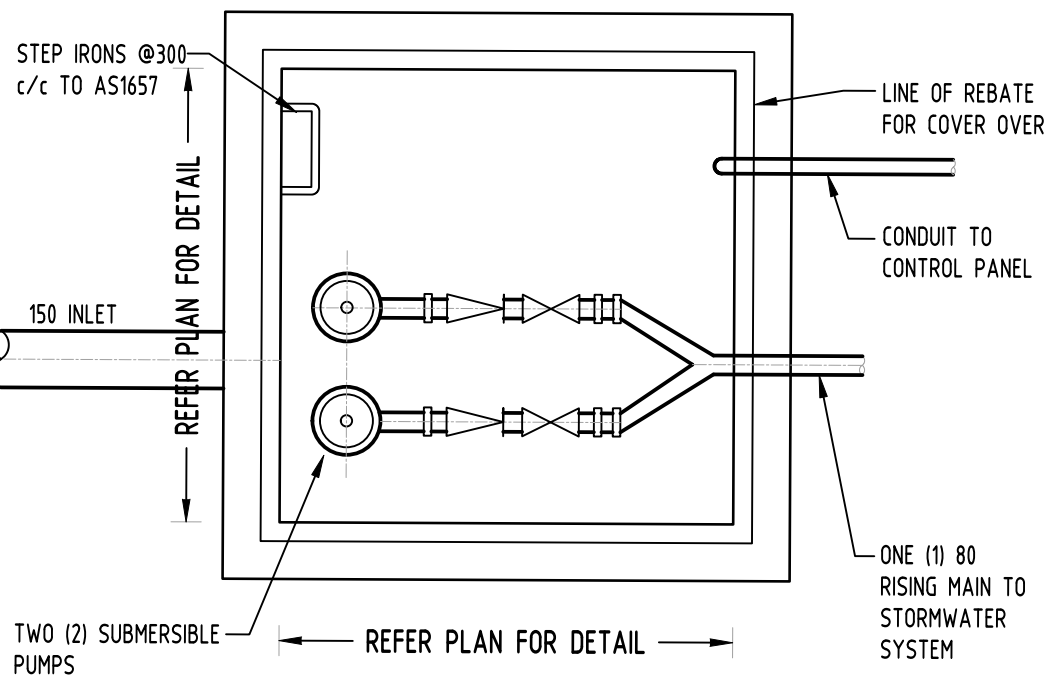
1
-
DETAIL
GRADED TRENCH DRAIN
NOT TO SCALE



2
-
DETAIL
CLEANING EYE
NOT TO SCALE

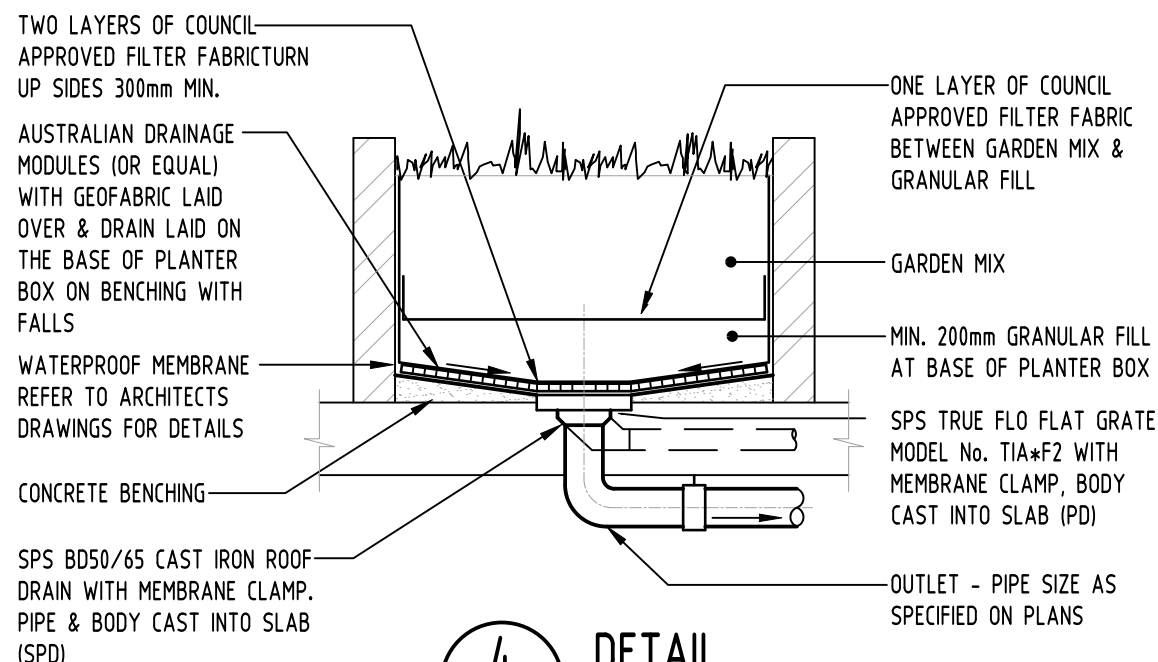


SECTION A-A

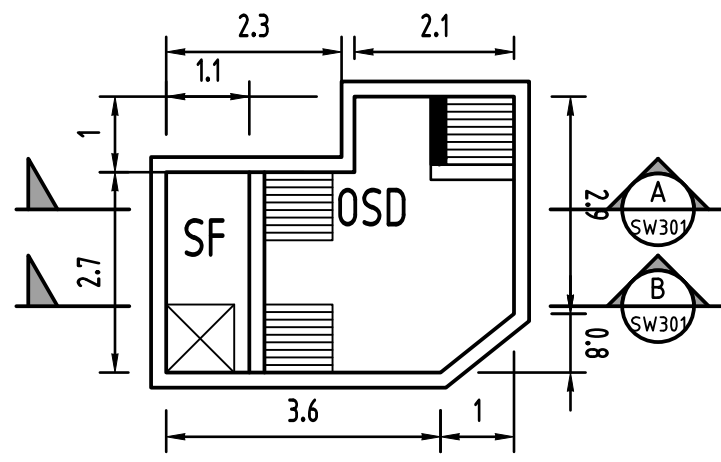


PLAN VIEW (WITHOUT COVER)

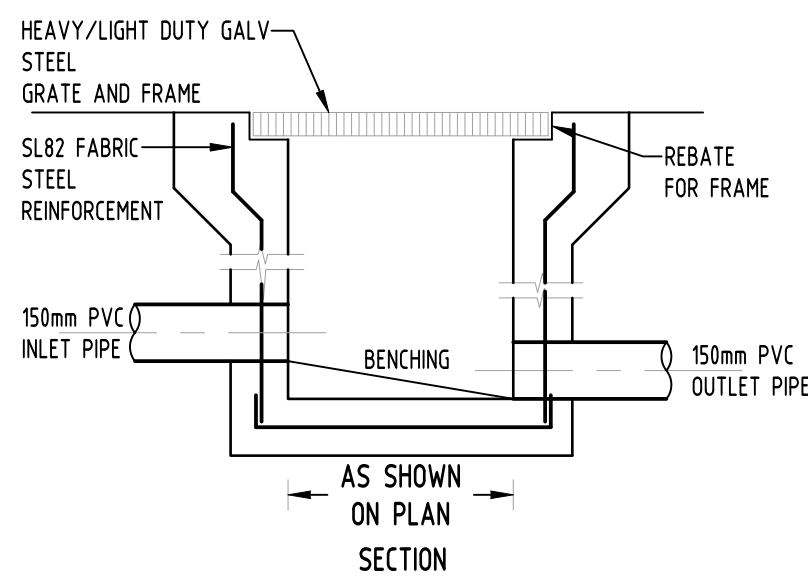
3
-
DETAIL
SUBSOIL PUMP OUT PIT
NOT TO SCALE



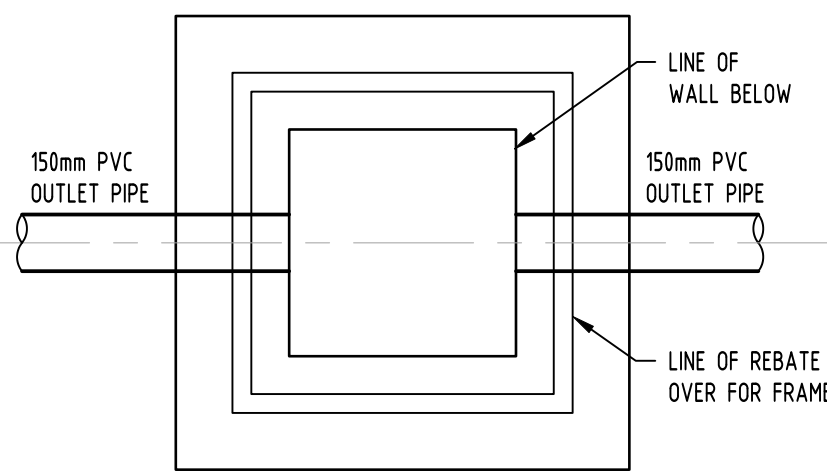
4
-
DETAIL
PLANTER DRAIN
NOT TO SCALE



OSD PLAN VIEW
SCALE 1:100

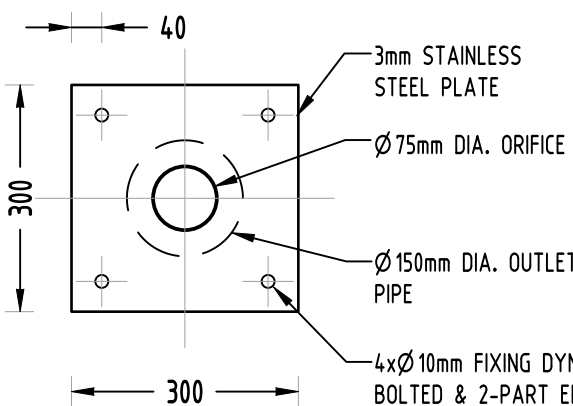


AS SHOWN ON PLAN SECTION

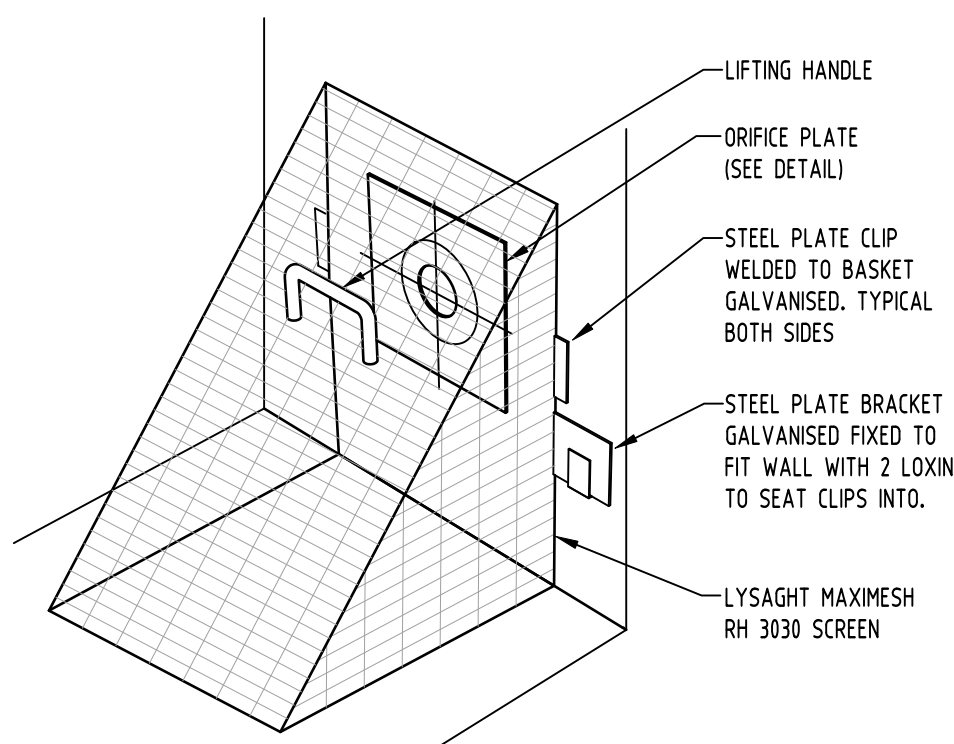


PLAN WITHOUT GRATE

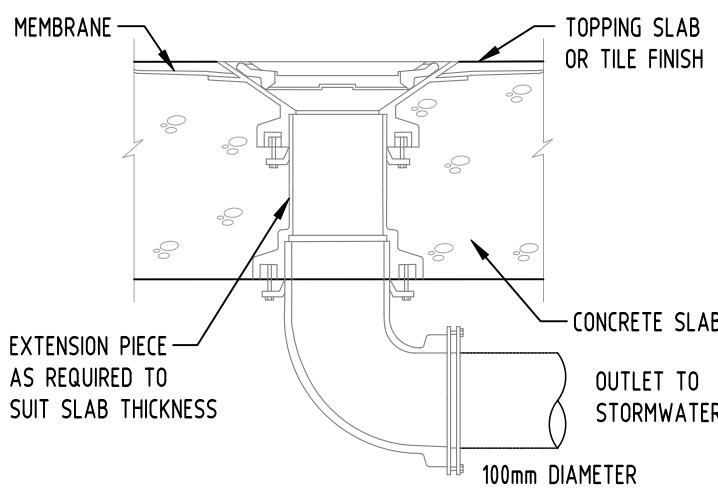
6
-
DETAIL
STORMWATER PIT
NOT TO SCALE



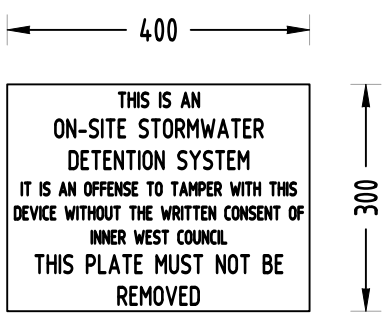
7
-
DETAIL
ORIFICE PLATE
NOT TO SCALE



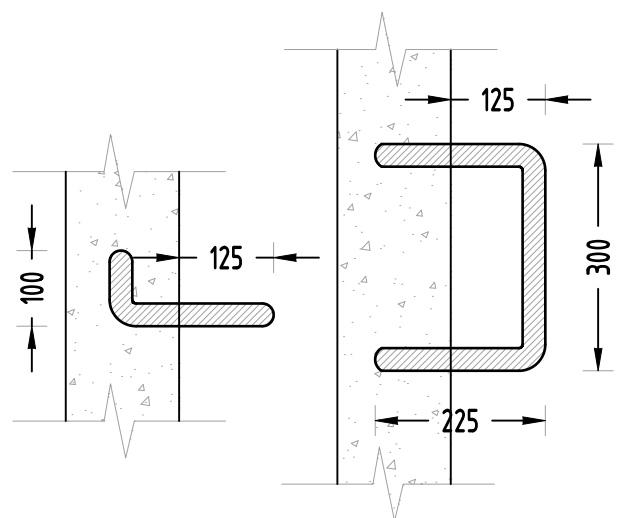
8
-
DETAIL
TRASH SCREEN
NOT TO SCALE



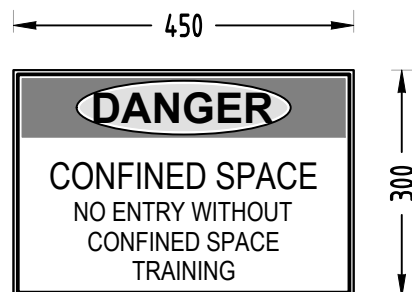
9
-
DETAIL
RAINWATER OUTLET
NOT TO SCALE



10
-
DETAIL
OSD SIGN
NOT TO SCALE



11
-
DETAIL
STEP IRONS
NOT TO SCALE



12
-
DETAIL
CONFINED SPACE SIGN
NOT TO SCALE

DESIGN NOTES:
SITE IS LOCATED IN INNER WEST COUNCIL LGA.

THE DESIGN COMPLIES WITH MARRICKVILLE COUNCIL'S DEVELOPMENT CONTROL PLAN (DCP) & PRE-DEVELOPMENT APPLICATION ADVICE WITH COUNCIL (REF. POA201700210).


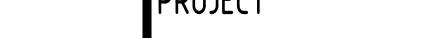
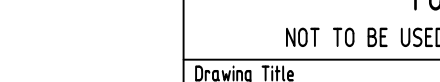
TOTAL SITE AREA: 1073m²
AREA BYPASSING OSD SYSTEM: 193m² (17.99%)

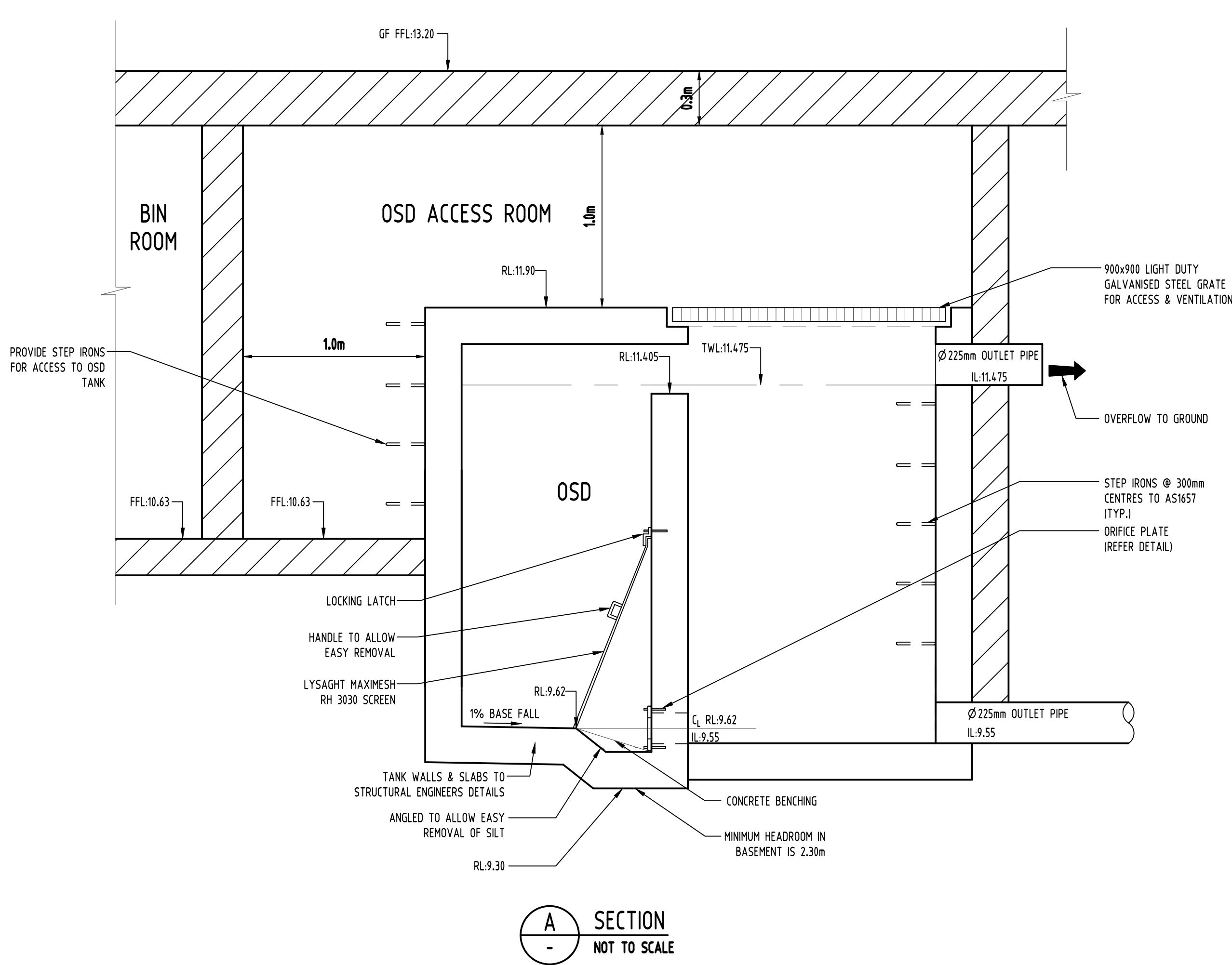
OSD IS REQUIRED AS PER PRE DA MEETING. IT IS SIZED UP BY USING "DRAINS" SOFTWARE TO LIMIT PSD TO THE EQUIVALENT FULLY PREVIOUS DISCHARGES FOR THE SITE AREA. REFER TO CALCULATION TABLE FOR DETAILS.

THE SITE IS FLOOD AFFECTED AS PER PRE DA MEETING. FLOOR LEVELS HAVE BEEN RAISED UP AND CREST HAVE BEEN PROPOSED ON DRIVEWAY AS SHOWN IN ARCHITECTURAL PLANS.

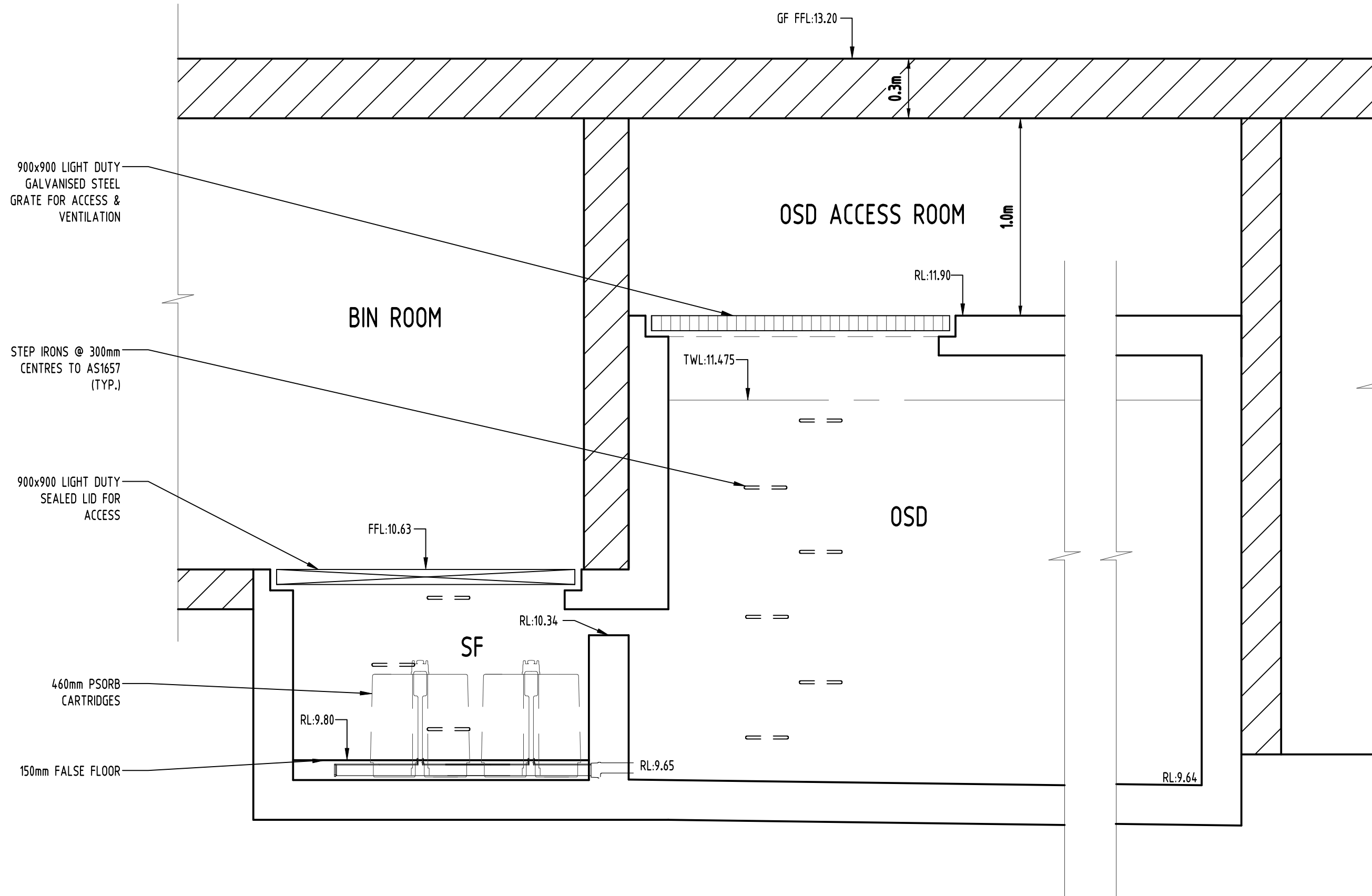
WSUD IS REQUIRED. FOLLOWING TARGETS SHOULD BE MET AS PER COUNCIL'S DCP:
TSS:85%
TP:60%
TN:45%
GP:90%

- LEGEND:**
- STORMWATER LINE
 - SSD SUBSOIL DRAINAGE LINE
 - SWRM STORMWATER RISING MAIN LINE
 - W AUTHORITY WATER LINE
 - G AUTHORITY GAS LINE
 - E AUTHORITY ELECTRICITY LINE
 - DP DOWNPIPE
 - RWO RAINWATER OUTLET
 - PD PLANTER DRAINS

Reference Coordination Drawing					QUALITY CONTROL				WARNING: THE DESIGNS, DRAWINGS, SPECIFICATIONS AND THE COPYRIGHT HEREIN REMAIN THE SOLE INTELLECTUAL PROPERTY OF S&G CONSULTANTS PTY LTD AND MUST NOT BE USED, COPIED, ALTERED OR REPRODUCED WHOLLY OR IN PART IN ANY FORM WITHOUT THE WRITTEN CONSENT OF S&G CONSULTANTS PTY LTD	Scales	CLIENT VINH & SAU			Suite 5.03, Level 5, 156 PACIFIC HIGHWAY ST LEONARDS, NSW 2065 T: +61 2 8883 4239 Email: office@sgce.com.au Web: www.sgce.com.au	PROJECT PROPOSED MIXED-USE DEVELOPMENT 315-321 ILLAWARRA ROAD, MARRICKVILLE	Drawing Status			FOR APPROVAL				
Discipline					Drawing Title and Number											NOT TO BE USED FOR CONSTRUCTION PURPOSES							
ARCH																Drawing Title							
ARCH																STORMWATER CONCEPT DESIGN							
STRUCT												DETAILS SHEET											
MECH								DRAWN				ZW		DATE		10.06.20		SHEET 1 OF 2					
ELEC								CHECKED				SH		DATE		10.06.20							
HYD								DESIGNED				ZW		DATE		10.06.20							
LANDS								VERIFIED				SH		DATE		10.06.20							
CIVIL								APPROVED				SH		DATE		10.06.20							
SURVEY																							
Issue				Last revision title				Issue				Last revision title				Issue				Last revision title			
1-preliminary				2-development application				3-construction certificate				4-tender				5-construction				6-other			
7-approval				8-approval				9-approval				10-approval				11-approval				12-approval			
13-approval				14-approval				15-approval				16-approval				17-approval				18-approval			
19-approval				20-approval				21-approval				22-approval				23-approval				24-approval			
25-approval				26-approval				27-approval				28-approval				29-approval				30-approval			
31-approval				32-approval				33-approval				34-approval				35-approval				36-approval			
37-approval				38-approval				39-approval				40-approval				41-approval				42-approval			
43-approval				44-approval				45-approval				46-approval				47-approval				48-approval			
49-approval				50-approval				51-approval				52-approval				53-approval				54-approval			
55-approval				56-approval				57-approval				58-approval				59-approval				60-approval			
61-approval				62-approval				63-approval				64-approval				65-approval				66-approval			
67-approval				68-approval				69-approval				70-approval				71-approval				72-approval			
73-approval				74-approval				75-approval				76-approval				77-approval				78-approval			
79-approval				80-approval				81-approval				82-approval				83-approval				84-approval			
85-approval				86-approval				87-approval				88-approval				89-approval				90-approval			
91-approval				92-approval				93-approval				94-approval				95-approval				96-approval			
97-approval				98-approval				99-approval				100-approval				101-approval				102-approval			
103-approval				104-approval				105-approval				106-approval				107-approval				108-approval			
109-approval				110-approval				111-approval				112-approval				113-approval				114-approval			
115-approval				116-approval				117-approval				118-approval				119-approval				120-approval			
121-approval				122-approval				123-approval				124-approval				125-approval				126-approval			
127-approval				128-approval				129-approval				130-approval				131-approval				132-approval			
133-approval				134-approval				135-approval				136-approval				137-approval				138-approval			
139-approval				140-approval				141-approval				142-approval				143-approval				144-approval			
145-approval				146-approval				147-approval				148-approval				149-approval				150-approval			
151-approval				152-approval				153-approval				154-approval				155-approval				156-approval			
157-approval				158-approval				159-approval				160-approval				161-approval				162-approval			
163-approval				164-approval				165-approval				166-approval				167-approval				168-approval			
169-approval				170-approval				171-approval				172-approval				173-approval				174-approval			
175-approval				176-approval				177-approval				178-approval				179-approval				180-approval			
181-approval				182-approval				183-approval				184-approval				185-approval				186-approval			
187-approval				188-approval				189-approval				190-approval				191-approval				192-approval			
193-approval				194-approval				195-approval				196-approval				197-approval				198-approval			
199-approval				200-approval				201-approval				202-approval				203-approval				204-approval			
205-approval				206-approval				207-approval				208-approval				209-approval				210-approval			
211-approval				212-approval				213-approval				214-approval				215-approval				216-approval			
217-approval				218-approval				219-approval				220-approval				221-approval				222-approval			
223-approval				224-approval				225-approval				226-approval				227-approval				228-approval			
229-approval				230-approval				231-approval				232-approval				233-approval				234-approval			
235-approval				236-approval				237-approval				238-approval				239-approval				240-approval			
241-approval				242-approval				243-approval				244-approval				245-approval				246-approval			
247-approval				248-approval				249-approval				250-approval				251-approval				252-approval			
253-approval				254-approval				255-approval				256-approval				257-approval				258-approval			
259-approval				260-approval				261-approval				262-approval				263-approval				264-approval			
265-approval				266-approval				267-approval				268-approval				269-approval				270-approval			
271-approval				272-approval				273-approval				274-approval				275-approval				276-approval			
277-approval				278-approval				279-approval				280-approval				281-approval				282-approval			
283-approval				284-approval				285-approval				286-approval				287-approval				288-approval			
289-approval				290-approval				291-approval				292-approval				293-approval				294-approval			
295-approval				296-approval				297-approval				298-approval				299-approval				300-approval			
301-approval				302-approval				303-approval				304-approval				305-approval				306-approval			
307-approval				308-approval				309-approval				310-approval				311-approval				312-approval			
313-approval				314-approval				315-approval				316-approval				317-approval				318-approval			
319-approval				320-approval				321-approval				322-approval				323-approval				324-approval			
325-approval				326-approval				327-approval				328-approval				329-approval				330-approval			
331-approval				332-approval				333-approval				334-approval				335-approval				336-approval			
337-approval				338-approval				339-approval				340-approval				341-approval				342-approval			
343-approval				344-approval				345-approval				346-approval				347-approval				348-approval			
349-approval				350-approval				351-approval				352-approval				353-approval				354-approval			
355-approval				356-approval				357-approval				358-approval				359-approval				360-approval			
361-approval				362-approval				363-approval				364-approval				365-approval				366-approval			
367-approval				368-approval				369-approval				370-approval				371-approval				372-approval			
373-approval				374-approval				375-approval				376-approval				377-approval				378-approval			
379-approval				380-approval				381-approval				382-approval				383-approval				384-approval			
385-approval				386-approval				387-approval				388-approval				389-approval				390-approval			
391-approval				392-approval				393-approval				394-approval				395-approval				396-approval			
397-approval				398-approval				399-approval				400-approval				401-approval				402-approval			
403-approval				404-approval				405-approval				406-approval				407-approval				408-approval			
409-approval				410-approval				411-approval				412-approval				413-approval				414-approval			
415-approval				416-approval				417-approval				418-approval				419-approval				420-approval			
421-approval				422-approval				423-approval				424-approval				425-approval				426-approval			
427-approval				428-approval				429-approval				430-approval				431-approval				432-approval			
433-approval				434-approval				435-approval				436-approval				437-approval				438-approval			
439-approval				440-approval				441-approval				442-approval				443-approval				444-approval			
445-approval				446-approval				447-approval				448-approval				449-approval				450-approval			
451-approval				452-approval				453-approval				454-approval				455-approval				456-approval			
457-approval				458-approval				459-approval				460-approval				461-approval				462-approval			
463-approval				464-approval				465-approval				466-approval				467-approval				468-approval			
469-approval				470-approval				471-approval				472-approval				473-approval				474-approval			
475-approval				476-approval				477-approval				478-approval				479-approval				480-approval			
481-approval				482-approval				483-approval				484-approval				485-approval				486-approval			
487-approval				488-approval				489-approval				490-approval				491-approval				492-approval			
493-approval				494-approval				495-approval				496-approval				497-approval				498-approval			
499-approval				500-approval				501-approval				502-approval				503-approval				504-approval			
505-approval				506-approval				507-approval				508-approval				509-approval				510-approval			
511-approval				512-approval				513-approval				514-approval				515-approval				516-approval			
517-approval				518-approval				519-approval				520-approval				521-approval				522-approval			
523-approval				524-approval				525-approval				526-approval				527-approval				528-approval			
529-approval				530-approval				531-approval				532-approval				533-approval				534-approval			
535-approval				536-approval				537-approval				538-approval				539-approval				540-approval			
541-approval				542-approval				543-approval				544-approval				545-approval				546-approval			
547-approval				548-approval				549-approval				550-approval				551-approval				552-approval			
553-approval				554-approval				555-approval				556-approval				557-approval				558-approval			
559-approval				560-approval				561-approval				562-approval				563-approval				564-approval			
565-approval				566-approval				567-approval				568-approval				569-approval				570-approval			
571-approval				572-approval				573-approval				574-approval				575-approval				576-approval			
577-approval				578-approval				579-approval				580-approval				581-approval				582-approval			
583-approval				584-approval				585-approval				586-approval				587-approval				588-approval			
589-approval				590-approval				591-approval				592-approval				593-approval				594-approval			
595-approval				596-approval				597-approval				598-approval				599-approval				600-approval			
601-approval				602-approval				603-approval				604-approval				605-approval				606-approval			
607-approval				608-approval				609-approval				610-approval				611-approval				612-approval			
613-approval				614-approval				615-approval				616-approval				617-approval				618-approval			
619-approval				620-approval				621-approval				622-approval				623-approval				624-approval			
625-approval				626-approval				627-approval				628-approval				629-approval				630-approval			
631-approval				632-approval				633-approval				634-approval				635-approval				636-approval			
637-approval				638-approval				639-approval				640-approval				641-approval				642-approval			
643-approval				644-approval				645-approval				646-approval				647-approval				648-approval			
649-approval				650-approval				651-approval				652-approval				653-approval				654-approval			
655-approval				656-approval				657-approval				658-approval				659-approval				660-approval			
661-approval				662-approval				663-approval				664-approval				665-approval				666-approval			
667-approval				668-approval				669-approval				670-approval				671-approval				672-approval			
673-approval				674-approval				675-approval				676-approval				677-approval				678-approval			
679-approval				680-approval				681-approval				682-approval				683-approval				684-approval			
685-approval				686-approval				687-approval				688-approval				689-approval				690-approval			
691-approval				692-approval				693-approval				694-approval				695-approval				696-approval			
697-approval				698-approval				699-approval				700-approval				701-approval				702-approval			
703-approval				704-approval				705-approval				706-approval				707-approval				708-approval			
709-approval				710-approval				711-approval				712-approval				713-approval				714-approval			
715-approval				716-approval				717-approval				718-approval				719-approval				720-approval			
721-approval				722-approval				723-approval				724-approval				725-approval				726-approval			
727-approval				728-approval				729-approval				730-approval				731-approval				732-approval			
733-approval				734-approval				735-approval				736-approval				737-approval				738-approval			
739-approval				740-approval				741-approval				742-approval				743-approval				744-approval			
745-approval				746-approval				747-approval				748-approval				749-approval				750-approval			
751-approval				752-approval				753-approval				754-approval				755-approval				756-approval			
757-approval				758-approval				759-approval				760-approval				761-approval				762-approval			
763-approval				764-approval				765-approval				766-approval				767-approval				768-approval			
769-approval				770-approval				771-approval				772-approval				773-approval				774-approval			
775-approval				776-approval				777-approval				778-approval				779-approval				780-approval			
781-approval				782-approval				783-approval				784-approval				785-approval				786-approval			
787-approval				788-approval				789-approval				790-approval				791-approval				792-approval			
793-approval				794-approval				795-approval				796-approval				797-approval				798-approval			
799-approval				800-approval				801-approval				802-approval				803-approval				804-approval			
805-approval				806-approval				807-approval				808-approval				809-approval				810-approval			
811-approval				812-approval				813-approval				814-approval				815-approval				816-approval			
817-approval				818-approval				819-approval				820-approval				821-approval				822-approval			
823-approval				824-approval				825-approval				826-approval				827-approval				828-approval			
829-approval				830-approval				831-approval				832-approval				833-approval				834-approval			
835-approval				836-approval				837-approval				838-approval											




A SECTION
-
NOT TO SCALE



B SECTION
-
NOT TO SCALE

POST-DEVELOPMENT OSD CALCULATIONS TABLE:

LOT AREA (m2)	PRE-DEV IMPERVIOUS (%)	POST-DEV IMPERVIOUS (%)	STORM (YR)	PRE-DEV FLOW (m3/s)	POST-DEV FLOW (m3/s)	PIPE OUTFLOW (m3/s)	WEIR OUTFLOW (m3/s)	BYPASSING PSD (m3/s)	TOTAL PSD (m3/s)	OSD VOLUME (m3)
1073	0	82.01	2	0.014	0.027	0.010	N/A	0.001	0.011	20.85
			5	0.025	0.035	0.012	N/A	0.003	0.015	
			100	0.051	0.058	0.016	0.022	0.007	0.045	

Reference Coordination Drawing					ENGINEERS AUSTRALIA Chartered Professional Engineer MEMBER
Discipline	Drawing Title and Number	Date	Rev.		
ARCH					
ARCH					
STRUCT					
MECH					
ELEC					
HYD					
FIRE					
LANDS					
CIVIL					
SURVEY					

Issue internal sequence and revision history			
1-preliminary	2-development application	3-construction certificate	4-tender
5-construction	6-other		

Issue	Last revision title	by	Date	Status
B	ISSUE FOR DA	ZW	10.06.2020	2
A	ISSUE FOR DA	FZ	10.10.2019	2
P1	PRELIMINARY	FZ	15.07.2019	1

Issue	Last revision title	by	Date	Status
B	ISSUE FOR DA	ZW	10.06.2020	2
A	ISSUE FOR DA	FZ	10.10.2019	2
P1	PRELIMINARY	FZ	15.07.2019	1

DIMENSIONS NOT SHOWN TO BE CHECKED ON SITE. DO NOT SCALE OF THIS DRAWING. POSTING OF AUTHORITIES NAME AND/OR EXISTING SERVICES ARE TO BE CHECKED PRIOR TO COMMENCEMENT OF WORK. REPORT ANY DISCREPANCIES TO THE CONSULTING ENGINEER FOR DESIGN/CLARIFICATION BEFORE PROCEEDING WITH THE WORK. THIS DRAWING IS TO BE READ IN CONJUNCTION WITH THE SPECIFICATIONS AND OTHER CONSULTANTS' DRAWINGS.

QUALITY CONTROL			
DRAWN	ZW	DATE	10.06.20
CHECKED	SH	DATE	10.06.20
DESIGNED	ZW	DATE	10.06.20
VERIFIED	SH	DATE	10.06.20
APPROVED	SH	DATE	10.06.20

WARNING: THE DESIGNS, DRAWINGS, SPECIFICATIONS AND THE COPYRIGHT HEREIN REMAIN THE SOLE INTELLECTUAL PROPERTY OF S&G CONSULTANTS PTY LTD AND MUST NOT BE USED, COPIED, ALTERED OR REPRODUCED WHOLLY OR IN PART IN ANY FORM WITHOUT THE WRITTEN CONSENT OF S&G CONSULTANTS PTY LTD

Scales

CLIENT
VINH & SAU

ARCHITECT
BENSON
McCORMACK
ARCHITECTURE

SGC
Engineering Value

Suite 5.03, Level 5,
156 PACIFIC HIGHWAY
ST LEONARDS, NSW 2065
T: +61 2 8883 4239
Email: office@sgce.com.au
Web: www.sgce.com.au

A.B.N. 21 118 222 530

PROJECT
PROPOSED
MIXED-USE DEVELOPMENT
315-321 ILLAWARRA ROAD, MARRICKVILLE

Grid	Datum	Sheet	Scale (at original size)
-	A.H.D.	7 of 9	AS SHOWN

Drawing Status	FOR APPROVAL NOT TO BE USED FOR CONSTRUCTION PURPOSES		
Drawing Title	STORMWATER CONCEPT DESIGN DETAILS SHEET SHEET 2 OF 2		
Project No	Drawing No	Revision No	
20190095	SW301	B	

Reference Coordination Drawing			
Discipline	Drawing Title and Number	Date	Rev.
ARCH			
ARCH			
STRUCT			
MECH			
ELEC			
HYD			
FIRE			
LANDS			
CIVIL			
SURVEY			

Issue internal sequence and revision history			
1-preliminary	2-development application	3-construction certificate	6-other
4-tender	5-construction		

8	ISSUE FOR DA	ZW	10.06.2020	2
A	ISSUE FOR DA	FZ	10.10.2019	2
P1	PRELIMINARY	FZ	15.07.2019	1
Issue Last revision title		by	Date	Status

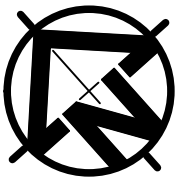


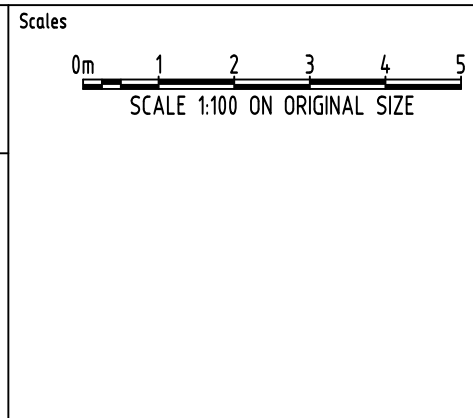
ENGINEERS AUSTRALIA
Chartered Professional Engineer
MEMBER

DIMENSIONS NOT SHOWN TO BE CHECKED ON SITE. DO NOT SCALE THIS DRAWING. POSTING OF AUTHORITIES MARK AND/OR EXISTING SERVICES ARE TO BE CHECKED PRIOR TO COMMENCEMENT OF WORK. REPORT ANY DISCREPANCIES TO THE CONSULTING ENGINEER FOR DESIGN/CLARIFICATION BEFORE PROCEEDING WITH THE WORK. THIS DRAWING IS TO BE READ IN CONJUNCTION WITH THE SPECIFICATIONS AND OTHER CONSULTANTS' DRAWINGS.


QUALITY CONTROL			
DRAWN	ZW	DATE	10.06.20
CHECKED	SH	DATE	10.06.20
DESIGNED	ZW	DATE	10.06.20
VERIFIED	SH	DATE	10.06.20
APPROVED	SH	DATE	10.06.20

WARNING: THE DESIGNS, DRAWINGS, SPECIFICATIONS AND THE COPYRIGHT HEREIN REMAIN THE SOLE INTELLECTUAL PROPERTY OF S&G CONSULTANTS PTY LTD AND MUST NOT BE USED, COPIED, ALTERED OR REPRODUCED WHOLLY OR IN PART IN ANY FORM WITHOUT THE WRITTEN CONSENT OF S&G CONSULTANTS PTY LTD





CLIENT
VINH & SAU



ARCHITECT
P + 61 2 8818 0478
F + 61 2 8818 0479
STUDIO 308/309/310/311/312/313/314/315/316/317/318/319/320/321/322/323/324/325/326/327/328/329/330/331/332/333/334/335/336/337/338/339/340/341/342/343/344/345/346/347/348/349/350/351/352/353/354/355/356/357/358/359/360/361/362/363/364/365/366/367/368/369/370/371/372/373/374/375/376/377/378/379/380/381/382/383/384/385/386/387/388/389/390/391/392/393/394/395/396/397/398/399/400/401/402/403/404/405/406/407/408/409/410/411/412/413/414/415/416/417/418/419/420/421/422/423/424/425/426/427/428/429/430/431/432/433/434/435/436/437/438/439/440/441/442/443/444/445/446/447/448/449/450/451/452/453/454/455/456/457/458/459/460/461/462/463/464/465/466/467/468/469/470/471/472/473/474/475/476/477/478/479/480/481/482/483/484/485/486/487/488/489/490/491/492/493/494/495/496/497/498/499/500/501/502/503/504/505/506/507/508/509/510/511/512/513/514/515/516/517/518/519/520/521/522/523/524/525/526/527/528/529/530/531/532/533/534/535/536/537/538/539/540/541/542/543/544/545/546/547/548/549/550/551/552/553/554/555/556/557/558/559/560/561/562/563/564/565/566/567/568/569/570/571/572/573/574/575/576/577/578/579/580/581/582/583/584/585/586/587/588/589/590/591/592/593/594/595/596/597/598/599/600/601/602/603/604/605/606/607/608/609/610/611/612/613/614/615/616/617/618/619/620/621/622/623/624/625/626/627/628/629/630/631/632/633/634/635/636/637/638/639/640/641/642/643/644/645/646/647/648/649/650/651/652/653/654/655/656/657/658/659/660/661/662/663/664/665/666/667/668/669/670/671/672/673/674/675/676/677/678/679/680/681/682/683/684/685/686/687/688/689/690/691/692/693/694/695/696/697/698/699/700/701/702/703/704/705/706/707/708/709/710/711/712/713/714/715/716/717/718/719/720/721/722/723/724/725/726/727/728/729/730/731/732/733/734/735/736/737/738/739/740/741/742/743/744/745/746/747/748/749/750/751/752/753/754/755/756/757/758/759/760/761/762/763/764/765/766/767/768/769/770/771/772/773/774/775/776/777/778/779/780/781/782/783/784/785/786/787/788/789/790/791/792/793/794/795/796/797/798/799/800/801/802/803/804/805/806/807/808/809/810/811/812/813/814/815/816/817/818/819/820/821/822/823/824/825/826/827/828/829/830/831/832/833/834/835/836/837/838/839/840/841/842/843/844/845/846/847/848/849/850/851/852/853/854/855/856/857/858/859/860/861/862/863/864/865/866/867/868/869/870/871/872/873/874/875/876/877/878/879/880/881/882/883/884/885/886/887/888/889/890/891/892/893/894/895/896/897/898/899/900/901/902/903/904/905/906/907/908/909/910/911/912/913/914/915/916/917/918/919/920/921/922/923/924/925/926/927/928/929/930/931/932/933/934/935/936/937/938/939/940/941/942/943/944/945/946/947/948/949/950/951/952/953/954/955/956/957/958/959/960/961/962/963/964/965/966/967/968/969/970/971/972/973/974/975/976/977/978/979/980/981/982/983/984/985/986/987/988/989/990/991/992/993/994/995/996/997/998/999/1000/1001/1002/1003/1004/1005/1006/1007/1008/1009/1010/1011/1012/1013/1014/1015/1016/1017/1018/1019/1020/1021/1022/1023/1024/1025/1026/1027/1028/1029/1030/1031/1032/1033/1034/1035/1036/1037/1038/1039/1040/1041/1042/1043/1044/1045/1046/1047/1048/1049/1050/1051/1052/1053/1054/1055/1056/1057/1058/1059/1060/1061/1062/1063/1064/1065/1066/1067/1068/1069/1070/1071/1072/1073/1074/1075/1076/1077/1078/1079/1080/1081/1082/1083/1084/1085/1086/1087/1088/1089/1090/1091/1092/1093/1094/1095/1096/1097/1098/1099/1100/1101/1102/1103/1104/1105/1106/1107/1108/1109/1110/1111/1112/1113/1114/1115/1116/1117/1118/1119/1120/1121/1122/1123/1124/1125/1126/1127/1128/1129/1130/1131/1132/1133/1134/1135/1136/1137/1138/1139/1140/1141/1142/1143/1144/1145/1146/1147/1148/1149/1150/1151/1152/1153/1154/1155/1156/1157/1158/1159/1160/1161/1162/1163/1164/1165/1166/1167/1168/1169/1170/1171/1172/1173/1174/1175/1176/1177/1178/1179/1180/1181/1182/1183/1184/1185/1186/1187/1188/1189/1190/1191/1192/1193/1194/1195/1196/1197/1198/1199/1200/1201/1202/1203/1204/1205/1206/1207/1208/1209/1210/1211/1212/1213/1214/1215/1216/1217/1218/1219/1220/1221/1222/1223/1224/1225/1226/1227/1228/1229/1230/1231/1232/1233/1234/1235/1236/1237/1238/1239/1240/1241/1242/1243/1244/1245/1246/1247/1248/1249/1250/1251/1252/1253/1254/1255/1256/1257/1258/1259/1260/1261/1262/1263/1264/1265/1266/1267/1268/1269/1270/1271/1272/1273/1274/1275/1276/1277/1278/1279/1280/1281/1282/1283/1284/1285/1286/1287/1288/1289/1290/1291/1292/1293/1294/1295/1296/1297/1298/1299/1300/1301/1302/1303/1304/1305/1306/1307/1308/1309/1310/1311/1312/1313/1314/1315/1316/1317/1318/1319/1320/1321/1322/1323/1324/1325/1326/1327/1328/1329/1330/1331/1332/1333/1334/1335/1336/1337/1338/1339/1340/1341/1342/1343/1344/1345/1346/1347/1348/1349/1350/1351/1352/1353/1354/1355/1356/1357/1358/1359/1360/1361/1362/1363/1364/1365/1366/1367/1368/1369/1370/1371/1372/1373/1374/1375/1376/1377/1378/1379/1380/1381/1382/1383/1384/1385/1386/1387/1388/1389/1390/1391/1392/1393/1394/1395/1396/1397/1398/1399/1400/1401/1402/1403/1404/1405/1406/1407/1408/1409/1410/1411/1412/1413/1414/1415/1416/1417/1418/1419/1420/1421/1422/1423/1424/1425/1426/1427/1428/1429/1430/1431/1432/1433/1434/1435/1436/1437/1438/1439/1440/1441/1442/1443/1444/1445/1446/1447/1448/1449/1450/1451/1452/1453/1454/1455/1456/1457/1458/1459/1460/1461/1462/1463/1464/1465/1466/1467/1468/1469/1470/1471/1472/1473/1474/1475/1476/1477/1478/1479/1480/1481/1482/1483/1484/1485/1486/1487/1488/1489/1490/1491/1492/1493/1494/1495/1496/1497/1498/1499/1500/1501/1502/1503/1504/1505/1506/1507/1508/1509/1510/1511/1512/1513/1514/1515/1516/1517/1518/1519/1520/1521/1522/1523/1524/1525/1526/1527/1528/1529/1530/1531/1532/1533/1534/1535/1536/1537/1538/1539/1540/1541/1542/1543/1544/1545/1546/1547/1548/1549/1550/1551/1552/1553/1554/1555/1556/1557/1558/1559/1560/1561/1562/1563/1564/1565/1566/1567/1568/1569/1570/1571/1572/1573/1574/1575/1576/1577/1578/1579/1580/1581/1582/1583/1584/1585/1586/1587/1588/1589/1590/1591/1592/1593/1594/1595/1596/1597/1598/1599/1600/1601/1602/1603/1604/1605/1606/1607/1608/1609/1610/1611/1612/1613/1614/1615/1616/1617/1618/1619/1620/1621/1622/1623/1624/1625/1626/1627/1628/1629/1630/1631/1632/1633/1634/1635/1636/1637/1638/1639/1640/1641/1642/1643/1644/1645/1646/1647/1648/1649/1650/1651/1652/1653/1654/1655/1656/1657/1658/1659/1660/1661/1662/1663/1664/1665/1666/1667/1668/1669/1670/1671/1672/1673/1674/1675/1676/1677/1678/1679/1680/1681/1682/1683/1684/1685/1686/1687/1688/1689/1690/1691/1692/1693/1694/1695/1696/1697/1698/1699/1700/1701/1702/1703/1704/1705/1706/1707/1708/1709/1710/1711/1712/1713/1714/1715/1716/1717/1718/1719/1720/1721/1722/1723/1724/1725/1726/1727/1728/1729/1730/1731/1732/1733/1734/1735/1736/1737/1738/1739/1740/1741/1742/1743/1744/1745/1746/1747/1748/1749/1750/1751/1752/1753/1754/1755/1756/1757/1758/1759/1760/1761/1762/1763/1764/1765/1766/1767/1768/1769/1770/1771/1772/1773/1774/1775/1776/1777/1778/1779/1780/1781/1782/1783/1784/1785/1786/1787/1788/1789/1790/1791/1792/1793/1794/1795/1796/1797/1798/1799/1800/1801/1802/1803/1804/1805/1806/1807/1808/1809/1810/1811/1812/1813/1814/1815/1816/1817/1818/1819/1820/1821/1822/1823/1824/1825/1826/1827/1828/1829/1830/1831/1832/1833/1834/1835/1836/1837/1838/1839/1840/1841/1842/1843/1844/1845/1846/1847/1848/1849/1850/1851/1852/1853/1854/1855/1856/1857/1858/1859/1860/1861/1862/1863/1864/1865/1866/1867/1868/1869/1870/1871/1872/1873/1874/1875/1876/1877/1878/1879/1880/1881/1882/1883/1884/1885/1886/1887/1888/1889/1890/1891/1892/1893/1894/1895/1896/1897/1898/1899/1900/1901/1902/1903/1904/1905/1906/1907/1908/1909/1910/1911/1912/1913/1914/1915/1916/1917/1918/1919/1920/1921/1922/1923/1924/1925/1926/1927/1928/1929/1930/1931/1932/1933/1934/1935/1936/1937/1938/1939/1940/1941/1942/1943/1944/1945/1946/1947/1948/1949/1950/1951/1952/1953/1954/1955/1956/1957/1958/1959/1960/1961/1962/1963/1964/1965/1966/1967/1968/1969/1970/1971/1972/1973/1974/1975/1976/1977/1978/1979/1980/1981/1982/1983/1984/1985/1986/1987/1988/1989/1990/1991/1992/1993/1994/1995/1996/1997/1998/1999/2000/2001/2002/2003/2004/2005/2006/2007/2008/2009/2010/2011/2012/2013/2014/2015/2016/2017/2018/2019/2020/2021/2022/2023/2024/2025/2026/2027/2028/2029/2030/2031/2032/2033/2034/2035/2036/2037/2038/2039/2040/2041/2042/2043/2044/2045/2046/2047/2048/2049/2050/2051/2052/2053/2054/2055/2056/2057/2058/2059/2060/2061/2062/2063/2064/2065/2066/2067/2068/2069/2070/2071/2072/2073/2074/2075/2076/2077/2078/2079/2080/2081/2082/2083/2084/2085/2086/2087/2088/2089/2090/2091/2092/2093/2094/2095/2096/2097/2098/2099/2100/2101/2102/2103/2104/2105/2106/2107/2108/2109/2110/2111/2112/2113/2114/2115/2116/2117/2118/2119/2120/2121/2122/2123/2124/2125/2126/2127/2128/2129/2130/2131/2132/2133/2134/2135/2136/2137/2138/2139/2140/2141/2142/2143/2144/2145/2146/2147/2148/2149/2150/2151/2152/2153/2154/2155/2156/2157/2158/2159/2160/2161/2162/2163/2164/2165/2166/2167/2168/2169/2170/2171/2172/2173/2174/2175/2176/2177/2178/2179/2180/2181/2182/2183/2184/2185/2186/2187/2188/2189/2190/2191/2192/2193/2194/2195/2196/2197/2198/2199/2200/2201/2202/2203/2204/2205/2206/2207/2208/2209/2210/2211/2212/2213/2214/2215/2216/2217/2218/2219/2220/2221/2222/2223/2224/2225/2226/2227/2228/2229/2230/2231/2232/2233/2234/2235/2236/2237/2238/2239/2240/2241/2242/2243/2244/2245/2246/2247/2248/2249/2250/2251/2252/2253/2254/2255/2256/2257/2258/2259/2260/2261/2262/2263/2264/2265/2266/2267/2268/2269/2270/2271/2272/2273/2274/2275/2276/2277/2278/2279/2280/2281/2282/2283/2284/2285/2286/2287/2288/2289/2290/2291/2292/2293/2294/2295/2296/2297/2298/2299/2300/2301/2302/2303/2304/2305/2306/2307/2308/2309/2310/2311/2312/2313/2314/2315/2316/2317/2318/2319/2320/2321/2322/2323/2324/2325/2326/2327/2328/2329/2330/2331/2332/2333/2334/2335/2336/2337/2338/2339/2340/2341/2342/2343/2344/2345/2346/2347/2348/2349/2350/2351/2352/2353/2354/2355/2356/2357/2358/2359/2360/2361/2362/2363/2364/2365/2366/2367/2368/2369/2370/2371/2372/2373/2374/2375/2376/2377/2378/2379/2380/2381/2382/2383/2384/2385/2386/2387/2388/2389/2390/2391/2392/2393/2394/2395/2396/2397/2398/2399/2400/2401/2402/2403/2404/2405/2406/2407/2408/2409/2410/2411/2412/2413/2414/2415/2416/2417/2418/2419/2420/2421/2422/2423/2424/2425/2426/2427/2428/2429/2430/2431/2432/2433/2434/2435/2436/2437/2438/2439/2440/2441/2442/2443/2444/2445/2446/2447/2448/2449/2450/2451/2452/2453/2454/2455/2456/2457/2458/2459/2460/2461/2462/2463/2464/2465/2466/2467/2468/2469/2470/2471/2472/2473/2474/2475/2476/2477/2478/2479/2480/2481/2482/2483/2484/2485/2486/2487/2488/2489/2490/2491/2492/2493/2494/2495/2496/2497/2498/2499/2500/2501/2502/2503/2504/2505/2506/2507/2508/2509/2510/2511/2512/2513/2514/2515/2516/2517/2518/2519/2520/2521/2522/2523/2524/2525/2526/2527/2528/2529/2530/2531/2532/2533/2534/2535/2536/2537/2538/2539/2540/2541/2542/2543/2544/2545/2546/2547/2548/2549/2550/2551/2552/2553/2554/2555/2556/2557/2558/2559/2560/2561/2562/2563/2564/2565/2566/2567/2568/2569/2570/2571/2572/2573/2574/2575/2576/2577/2578/2579/2580/2581/2582/2583/2584/2585/2586/2587/2588/2589/2590/2591/2592/2593/2594/2595/2596/2597/2598/2599/2600/2601/2602/2603/