



Check all dimensions and site conditions prior to commencement of any work, the purchase or ordering of any materials, fittings, plant, services or equipment and the preparation of shop drawings and or the fabrication of any components.

Do not scale drawings - refer to figured dimensions only. Any discrepancies shall immediately be referred to the architect for clarification.

All drawings may not be reproduced or distributed without prior permission from the architect.

KEY

- ROOFTOP LANDSCAPED AREA
- LANDSCAPED AREA L03 (COURTYARD)
- LANDSCAPED AREA GROUND (DEEP SOIL ZONE)
- PAVING
- SWIMMING POOL
- PROPOSED TREES

4	06.11.23	DPE RFIs	CC	
3	12.07.23	For Pre-Lodgement	HC	
2	06.07.23	For Information	HC	
1	02.06.23	For Information	HC	
Rev	Date	Description	Initial	Checked

Bannisters
147 Soldiers Point Road

Landscape Plan

Status	MOD 4		
Scale	As indicated	@ A1	
Drawn	Author	Checked	Checker
Project No.	S12726		
Plot Date	8/11/2023 10:43:47 AM		
BIM			

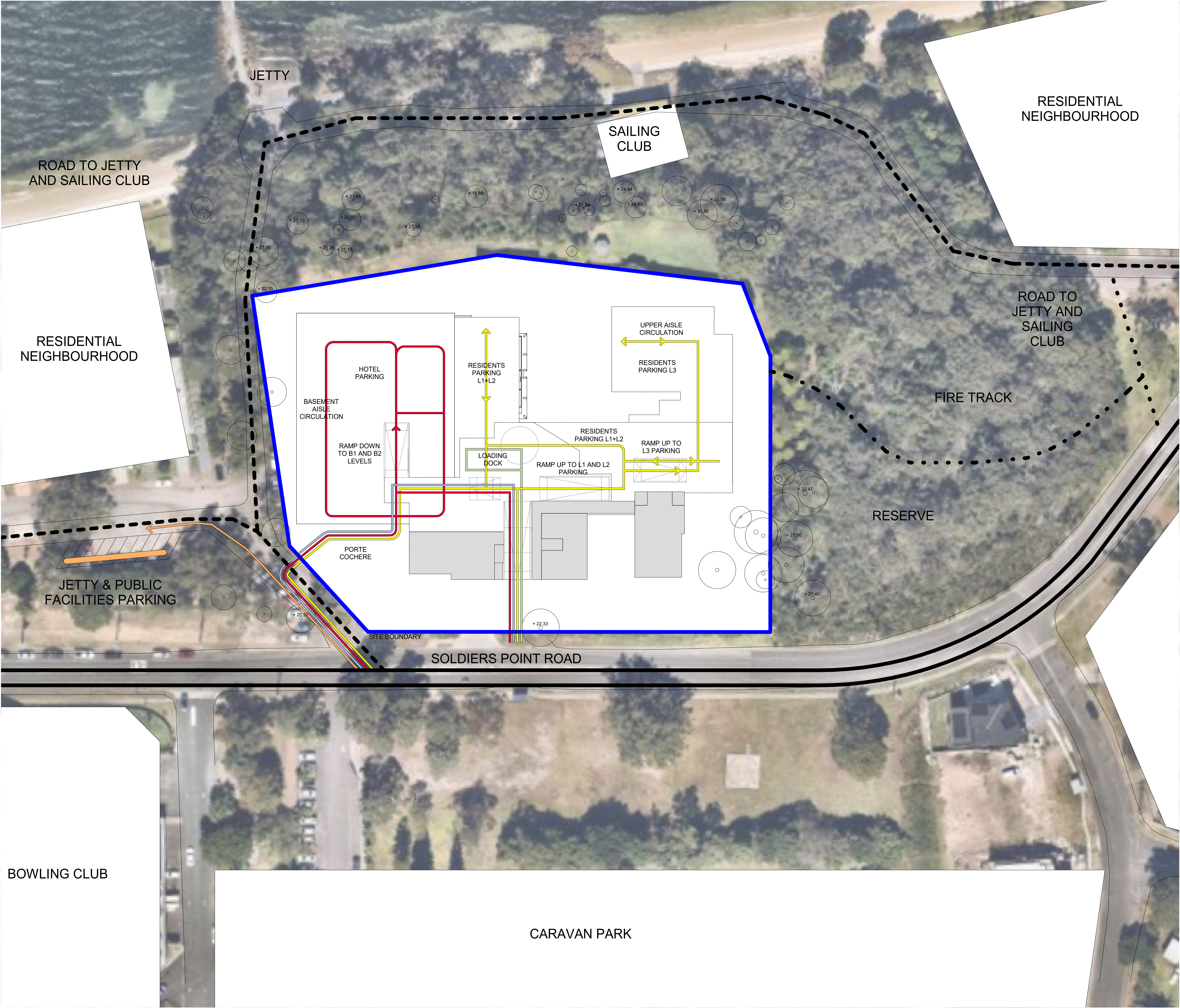
Drawing no.	Revision
P01.100	4

Melbourne 1 Nicholson Street
Melbourne VIC 3000 Australia
T 03 8664 6200 F 03 8664 6300
email mel@batesmart.com.au
http://www.batesmart.com.au

Sydney 43 Brisbane Street
Surry Hills NSW 2010 Australia
T 02 8354 5100 F 02 8354 5199
email syd@batesmart.com.au
http://www.batesmart.com.au

Bates Smart Architects Pty Ltd ABN 68 094 740 986
NSW Nominated Responsible Architects: Kellie Payne Reg. 6454 / Philip Vivian Reg. 6696 /
Guy Lake Reg. 7119 / Simon Swaney Reg. 7305 / Matt Allen Reg. 8498

BATESSMART



4	06.11.23	DPE RFIs	CC	
3	12.07.23	For Pre- Lodgement	HC	
2	06.07.23	For Information	HC	
1	02.06.23	For Information	HC	
Rev	Date	Description	Initial	Checked

Bannisters 147 Soldiers Point Road

Movement Diagram - Vehicular

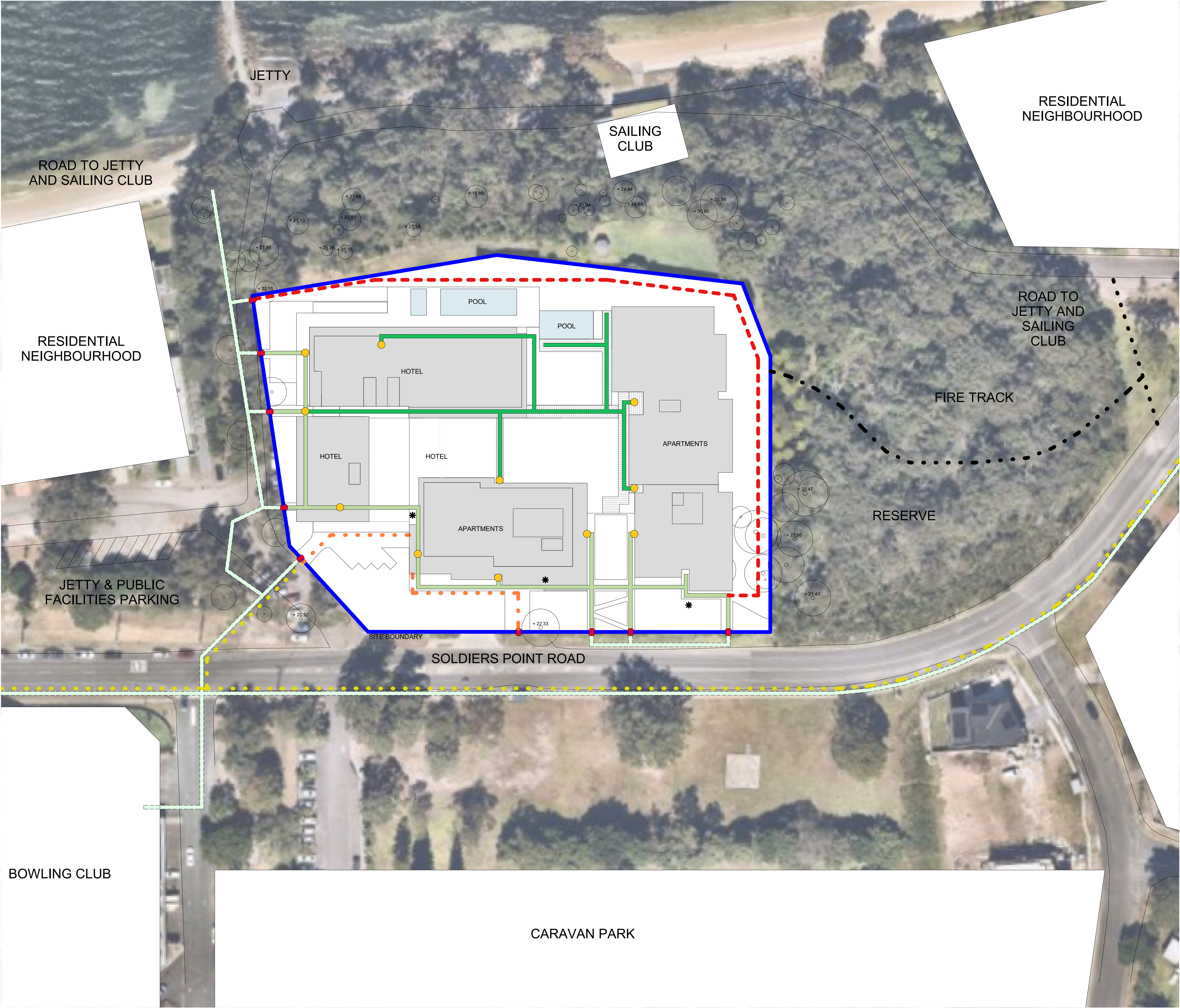
Status	MOD 4		
Scale	1 : 500	@ A1	
Drawn	Author	Checked	Checker
Project No.	S12726		
Plot Date	8/11/2023 10:02:33 AM		
BIM			

Drawing no.	Revision
P01.200	4

Melbourne 1 Nicholson Street
Melbourne VIC 3000 Australia
T 03 8664 6200 F 03 8664 6300
email mel@batesmart.com.au
http://www.batesmart.com.au

Sydney 43 Brisbane Street
Surry Hills NSW 2010 Australia
T 02 8354 5100 F 02 8354 5199
email syd@batesmart.com.au
http://www.batesmart.com.au

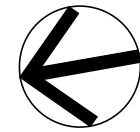
Bates Smart Architects Pty Ltd ABN 68 094 740 986
NSW Nominated Responsible Architects: Kellie Payne Reg. 6454 / Philip Vivian Reg. 6696 /
Guy Lake Reg. 7119 / Simon Swaney Reg. 7305 / Matt Allen Reg. 8498



4	06.11.23	DPE RFIs	CC	
3	12.07.23	For Pre-Lodgement	HC	
2	06.07.23	For Information	HC	
1	02.06.23	For Information	HC	
Rev	Date	Description	Initial	Checked

Bannisters
147 Soldiers Point Road

Movement Diagram - Pedestrian and Cycle



Status	MOD 4		
Scale	1 : 500	@ A1	
Drawn	Author	Checked	Checker
Project No.	S12726		
Plot Date	8/12/2023 3:18:37 PM		
BIM			

Drawing no.	Revision
P01.300	4
Melbourne 1 Nicholson Street Melbourne VIC 3000 Australia T 03 8664 6200 F 03 8664 6300 email mel@batesmart.com.au http://www.batesmart.com.au	Sydney 43 Brisbane Street Surry Hills NSW 2010 Australia T 02 8354 5100 F 02 8354 5199 email syd@batesmart.com.au http://www.batesmart.com.au

Bates Smart Architects Pty Ltd ABN 68 094 740 986
NSW Nominated Responsible Architects: Kellie Payne Reg. 6454 / Philip Vivian Reg. 6696 / Guy Lake Reg. 7119 / Simon Swaney Reg. 7305 / Matt Allen Reg. 8498

BATESSMART

Check all dimensions and site conditions prior to commencement of any work, the purchase or ordering of any materials, fittings, plant, services or equipment and the preparation of shop drawings and or the fabrication of any components.

Do not scale drawings - refer to figured dimensions only. Any discrepancies shall immediately be referred to the architect for clarification.

All drawings may not be reproduced or distributed without prior permission from the architect.

KEY

LOBBIES & AMENITIES

BOH

LIFTS & STAIRS

CARPARKING & SERVICES

COVERED TERRACE

HOTEL

HOTEL BALCONIES

RESIDENTIAL APARTMENTS

APARTMENT BALCONIES

POOLS

DECKING & FOOTPATH

PARKING DESIGNATED FOR USE BY PATRONS OF THE PUBLIC ELEMENTS

MOD 2 CONCEPT APPROVAL (OUTLINE OF BUILDING AT PLAN CUT LEVEL)

MOD 2 CONCEPT APPROVAL (OUTLINE OF BUILDING BELOW)

UNEXCAVATED AREA

4	06.11.23	DPE RFIs	CC	
3	12.07.23	For Pre-Lodgement	HC	
2	06.07.23	For Information	HC	
1	02.06.23	For Information	HC	
Rev	Date	Description	Initial	Checked

Bannisters
147 Soldiers Point Road

Basement Plan 01

Status	MOD 4		
Scale	As indicated	@ A1	
Drawn	Author	Checked	Checker
Project No.	S12726		
Plot Date	8/11/2023 10:03:09 AM		
BIM			

Drawing no.	Revision
P03.B01	4

Melbourne 1 Nicholson Street
Melbourne VIC 3000 Australia
T 03 8664 6200 F 03 8664 6300
email mel@batesmart.com.au
http://www.batesmart.com.au

Sydney 43 Brisbane Street
Surry Hills NSW 2010 Australia
T 02 8354 5100 F 02 8354 5199
email syd@batesmart.com.au
http://www.batesmart.com.au

Bates Smart Architects Pty Ltd ABN 68 094 740 986
NSW Nominated Responsible Architects: Kellie Payne Reg. 6454 / Philip Vivian Reg. 6696 /
Guy Lake Reg. 7119 / Simon Swaney Reg. 7305 / Matt Allen Reg. 8498

BATESSMART

Check all dimensions and site conditions prior to commencement of any work, the purchase or ordering of any materials, fittings, plant, services or equipment and the preparation of shop drawings and or the fabrication of any components.

Do not scale drawings - refer to figured dimensions only. Any discrepancies shall immediately be referred to the architect for clarification.

All drawings may not be reproduced or distributed without prior permission from the architect.

KEY



LOBBIES & AMENITIES



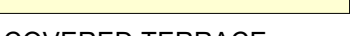
BOH



LIFTS & STAIRS



CARPARKING & SERVICES



COVERED TERRACE



HOTEL



HOTEL BALCONIES



RESIDENTIAL APARTMENTS



APARTMENT BALCONIES



POOLS



DECKING & FOOTPATH



PARKING DESIGNATED FOR USE BY PATRONS OF THE PUBLIC ELEMENTS

MOD 2 CONCEPT APPROVAL (OUTLINE OF BUILDING AT PLAN CUT LEVEL)

MOD 2 CONCEPT APPROVAL (OUTLINE OF BUILDING BELOW)



UNEXCAVATED AREA

4	06.11.23	DPE RFIs	CC	
3	12.07.23	For Pre-Lodgement	HC	
2	06.07.23	For Information	HC	
1	02.06.23	For Information	HC	
Rev	Date	Description	Initial	Checked

Bannisters
147 Soldiers Point Road

Basement Plan 02

Status	MOD 4		
Scale	As indicated	@ A1	
Drawn	Author	Checked	Checker
Project No.	S12726		
Plot Date	8/11/2023 10:03:12 AM		

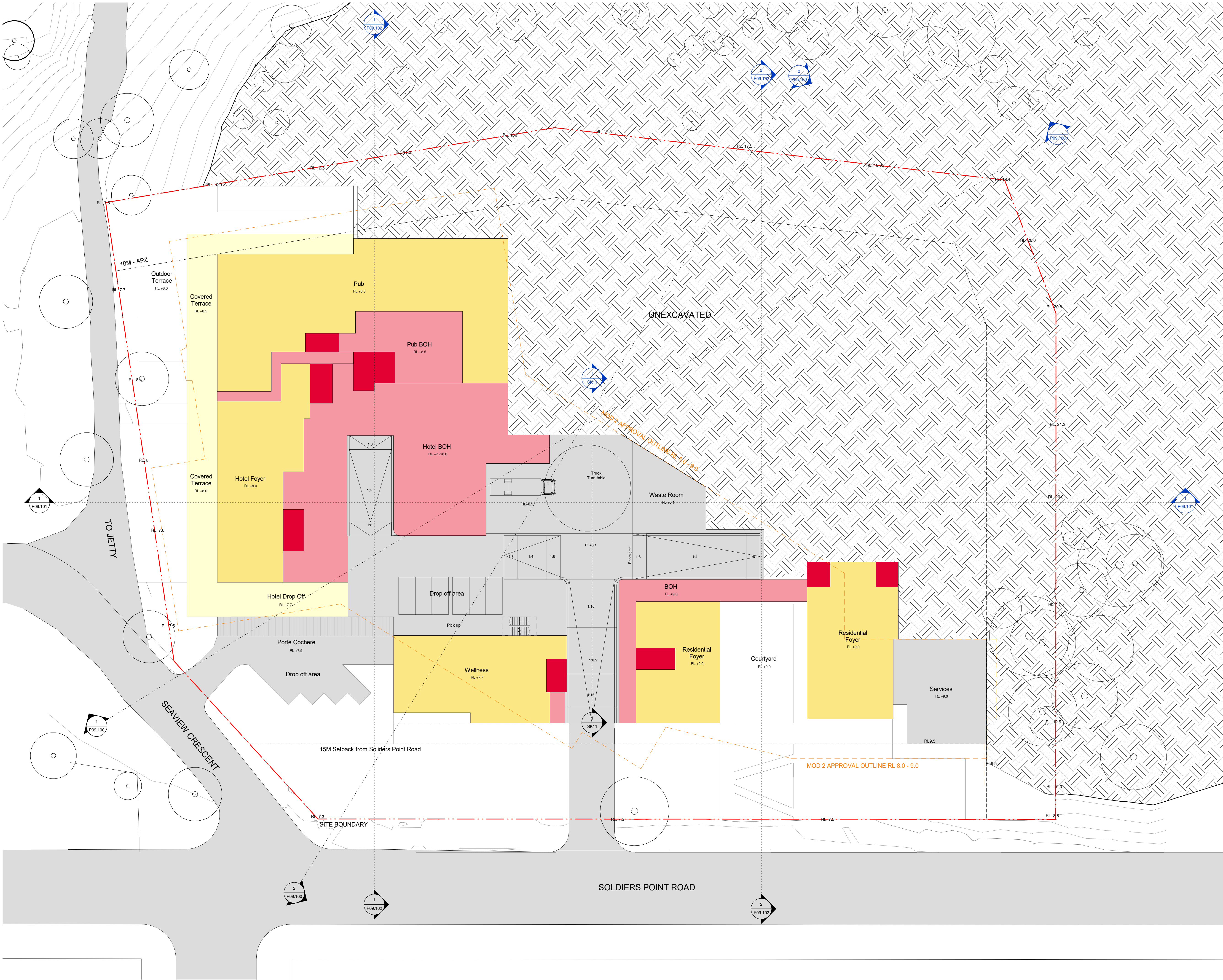
BIM	
Drawing no.	Revision
P03.B02	4

Melbourne 1 Nicholson Street
Melbourne VIC 3000 Australia
T 03 8664 6200 F 03 8664 6300
email mel@batesmart.com.au
http://www.batesmart.com.au

Sydney 43 Brisbane Street
Surry Hills NSW 2010 Australia
T 02 8354 5100 F 02 8354 5199
email syd@batesmart.com.au
http://www.batesmart.com.au

Bates Smart Architects Pty Ltd ABN 68 094 740 986
NSW Nominated Responsible Architects: Kellie Payne Reg. 6454 / Philip Vivian Reg. 6696 /
Guy Lake Reg. 7119 / Simon Swaney Reg. 7305 / Matt Allen Reg. 8498

BATESSMART™



Check all dimensions and site conditions prior to commencement of any work, the purchase or ordering of any materials, fittings, plant, services or equipment and the preparation of shop drawings and or the fabrication of any components.

Do not scale drawings - refer to figured dimensions only. Any discrepancies shall immediately be referred to the architect for clarification.

All drawings may not be reproduced or distributed without prior permission from the architect.

KEY

LOBBIES & AMENITIES

BOH

LIFTS & STAIRS

CARPARKING & SERVICES

COVERED TERRACE

HOTEL

HOTEL BALCONIES

RESIDENTIAL APARTMENTS

APARTMENT BALCONIES

POOLS

DECKING & FOOTPATH

PARKING DESIGNATED FOR USE BY PATRONS OF THE PUBLIC ELEMENTS

MOD 2 CONCEPT APPROVAL (OUTLINE OF BUILDING AT PLAN CUT LEVEL)

MOD 2 CONCEPT APPROVAL (OUTLINE OF BUILDING BELOW)

UNEXCAVATED AREA

UNEXCAVATED AREA

4	06.11.23	DPE RFLs	CC	
3	12.07.23	For Pre-Lodgement	HC	
2	06.07.23	For Information	HC	
1	02.06.23	For Information	HC	
Rev	Date	Description	Initial	Checked

Bannisters 147 Soldiers Point Road

Ground Level Plan

Status	MOD 4		
Scale	As indicated	@ A1	
Drawn	Author	Checked	Checker
Project No.	S12726		
Plot Date	8/11/2023 10:02:41 AM		
BIM			

Drawing no.	Revision
P03.000	4

Melbourne 1 Nicholson Street
Melbourne VIC 3000 Australia
T 03 8664 6200 F 03 8664 6300
email mel@batesmart.com.au
http://www.batesmart.com.au

Sydney 43 Brisbane Street
Surry Hills NSW 2010 Australia
T 02 8354 5100 F 02 8354 5199
email syd@batesmart.com.au
http://www.batesmart.com.au

Bates Smart Architects Pty Ltd ABN 68 094 740 986
NSW Nominated Responsible Architects: Kellie Payne Reg. 6454 / Philip Vivian Reg. 6696 /
Guy Lake Reg. 7119 / Simon Swaney Reg. 7305 / Matt Allen Reg. 8498

BATESSMART



Check all dimensions and site conditions prior to commencement of any work, the purchase or ordering of any materials, fittings, plant, services or equipment and the preparation of shop drawings and or the fabrication of any components.

Do not scale drawings - refer to figured dimensions only. Any discrepancies shall immediately be referred to the architect for clarification.

All drawings may not be reproduced or distributed without prior permission from the architect.

KEY

- LOBBIES & AMENITIES
- BOH
- LIFTS & STAIRS
- CARPARKING & SERVICES
- COVERED TERRACE
- HOTEL
- HOTEL BALCONIES
- RESIDENTIAL APARTMENTS
- APARTMENT BALCONIES
- POOLS
- DECKING & FOOTPATH
- PARKING DESIGNATED FOR USE BY PATRONS OF THE PUBLIC ELEMENTS

MOD 2 CONCEPT APPROVAL (OUTLINE OF BUILDING AT PLAN CUT LEVEL)

MOD 2 CONCEPT APPROVAL (OUTLINE OF BUILDING BELOW)

UNEXCAVATED AREA

4	06.11.23	DPE RFIs	CC	
3	12.07.23	For Pre-Lodgement	HC	
2	06.07.23	For Information	HC	
1	02.06.23	For Information	HC	
Rev	Date	Description	Initial	Checked

Bannisters
147 Soldiers Point Road

Level 01 Plan

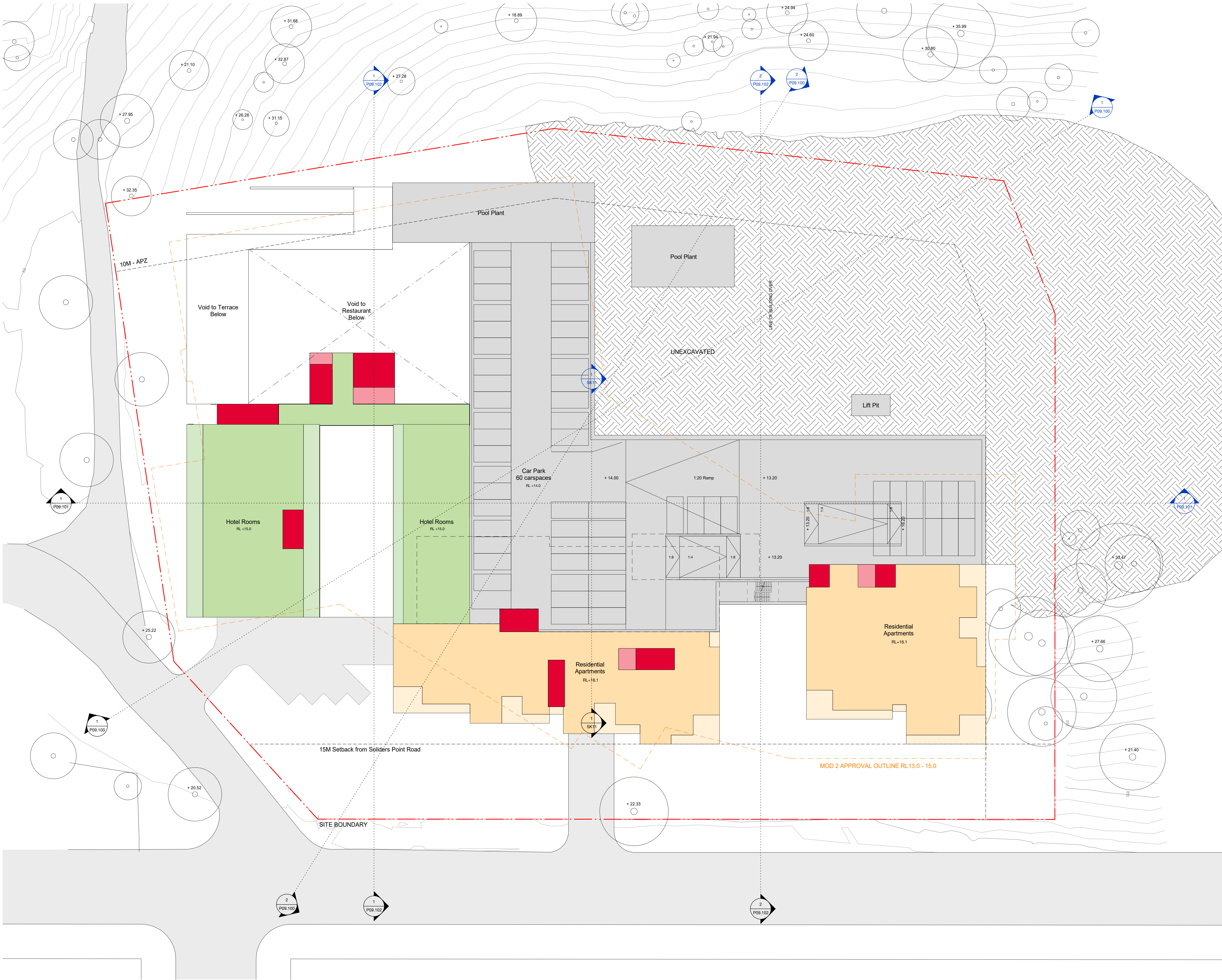
Status	MOD 4		
Scale	As indicated	@ A1	
Drawn	Author	Checked	Checker
Project No.	S12726		
Plot Date	8/11/2023 10:02:44 AM		
BIM			

Drawing no.	Revision
P03.001	4

Melbourne 1 Nicholson Street
Melbourne VIC 3000 Australia
T 03 8664 6200 F 03 8664 6300
email mel@batesmart.com.au
http://www.batesmart.com.au

Sydney 43 Brisbane Street
Surry Hills NSW 2010 Australia
T 02 8354 5100 F 02 8354 5199
email syd@batesmart.com.au
http://www.batesmart.com.au

Bates Smart Architects Pty Ltd ABN 68 094 740 986
NSW Nominated Responsible Architects: Kellie Payne Reg. 6454 / Philip Vivian Reg. 6696 /
Guy Lake Reg. 7119 / Simon Swaney Reg. 7305 / Matt Allen Reg. 8498



Check all dimensions and site conditions prior to commencement of any work, the purchase or ordering of any materials, fittings, plant, services or equipment and the preparation of shop drawings and or the fabrication of any components.

Do not scale drawings - refer to figured dimensions only. Any discrepancies shall immediately be referred to the architect for clarification.

All drawings may not be reproduced or distributed without prior permission from the architect.

KEY

- LOBBIES & AMENITIES
- BOH
- LIFTS & STAIRS
- CARPARKING & SERVICES
- COVERED TERRACE
- HOTEL
- HOTEL BALCONIES
- RESIDENTIAL APARTMENTS
- APARTMENT BALCONIES
- POOLS
- DECKING & FOOTPATH
- PARKING DESIGNATED FOR USE BY PATRONS OF THE PUBLIC ELEMENTS

MOD 2 CONCEPT APPROVAL (OUTLINE OF BUILDING AT PLAN CUT LEVEL)

MOD 2 CONCEPT APPROVAL (OUTLINE OF BUILDING BELOW)

UNEXCAVATED AREA

4	06.11.23	DPE RFIs	CC	
3	12.07.23	For Pre- Lodgement	HC	
2	06.07.23	For Information	HC	
1	02.06.23	For Information	HC	
Rev	Date	Description	Initial	Checked

Bannisters 147 Soldiers Point Road

Level 02 Plan

Status	MOD 4		
Scale	As indicated	@	A1
Drawn	Author	Checked	Checker
Project No.	S12726		
Plot Date	8/11/2023 10:02:47 AM		
BIM			

Drawing no.	Revision
P03.002	4

Melbourne 1 Nicholson Street
Melbourne VIC 3000 Australia
T 03 8664 6200 F 03 8664 6300
email mel@batesmart.com.au
http://www.batesmart.com.au

Sydney 43 Brisbane Street
Surry Hills NSW 2010 Australia
T 02 8354 5100 F 02 8354 5199
email syd@batesmart.com.au
http://www.batesmart.com.au

Bates Smart Architects Pty Ltd ABN 68 094 740 986
NSW Nominated Responsible Architects: Kellie Payne Reg. 6454 / Philip Vivian Reg. 6696 /
Guy Lake Reg. 7119 / Simon Swaney Reg. 7305 / Matt Allen Reg. 8498

BATESSMART

Check all dimensions and site conditions prior to commencement of any work, the purchase or ordering of any materials, fittings, plant, services or equipment and the preparation of shop drawings and or the fabrication of any components.

Do not scale drawings - refer to figured dimensions only. Any discrepancies shall immediately be referred to the architect for clarification.

All drawings may not be reproduced or distributed without prior permission from the architect.

KEY

LOBBIES & AMENITIES

BOH

BOH

LIFTS & STAIRS

CARPARKING & SERVICES

COVERED TERRACE

HOTEL

HOTEL BALCONIES

RESIDENTIAL APARTMENTS

APARTMENT BALCONIES

POOLS

DECKING & FOOTPATH

PARKING DESIGNATED FOR USE BY PATRONS OF THE PUBLIC ELEMENTS

MOD 2 CONCEPT APPROVAL (OUTLINE OF BUILDING AT PLAN CUT LEVEL)

MOD 2 CONCEPT APPROVAL (OUTLINE OF BUILDING BELOW)

UNEXCAVATED AREA

MOD 2 CONCEPT APPROVAL (OUTLINE OF BUILDING AT PLAN CUT LEVEL)

MOD 2 CONCEPT APPROVAL (OUTLINE OF BUILDING BELOW)

UNEXCAVATED AREA

4	06.11.23	DPE RFIs	CC	
3	12.07.23	For Pre-Lodgement	HC	
2	06.07.23	For Information	HC	
1	02.06.23	For Information	HC	
Rev	Date	Description	Initial	Checked

Bannisters 147 Soldiers Point Road

Level 03 Plan

Status	MOD 4		
Scale	As indicated	@ A1	
Drawn	Author	Checked	Checker
Project No.	S12726		
Plot Date	8/11/2023 10:02:50 AM		

BIM	
Drawing no.	Revision
P03.003	4

Melbourne 1 Nicholson Street
Melbourne VIC 3000 Australia
T 03 8664 6200 F 03 8664 6300
email mel@batesmart.com.au
http://www.batesmart.com.au

Sydney 43 Brisbane Street
Surry Hills NSW 2010 Australia
T 02 8354 5100 F 02 8354 5199
email syd@batesmart.com.au
http://www.batesmart.com.au

Bates Smart Architects Pty Ltd ABN 68 094 740 986
NSW Nominated Responsible Architects: Kellie Payne Reg. 6454 / Philip Vivian Reg. 6696 /
Guy Lake Reg. 7119 / Simon Swaney Reg. 7305 / Matt Allen Reg. 8498

BATESSMART™

Check all dimensions and site conditions prior to commencement of any work, the purchase or ordering of any materials, fittings, plant, services or equipment and the preparation of shop drawings and or the fabrication of any components.

Do not scale drawings - refer to figured dimensions only. Any discrepancies shall immediately be referred to the architect for clarification.

All drawings may not be reproduced or distributed without prior permission from the architect.

KEY

LOBBIES & AMENITIES

BOH

LIFTS & STAIRS

CARPARKING & SERVICES

COVERED TERRACE

HOTEL

HOTEL BALCONIES

RESIDENTIAL APARTMENTS

APARTMENT BALCONIES

POOLS

DECKING & FOOTPATH

PARKING DESIGNATED FOR USE BY PATRONS OF THE PUBLIC ELEMENTS

MOD 2 CONCEPT APPROVAL (OUTLINE OF BUILDING AT PLAN CUT LEVEL)

MOD 2 CONCEPT APPROVAL (OUTLINE OF BUILDING BELOW)

UNEXCAVATED AREA

MOD 2 CONCEPT APPROVAL (OUTLINE OF BUILDING AT PLAN CUT LEVEL)

MOD 2 CONCEPT APPROVAL (OUTLINE OF BUILDING BELOW)

UNEXCAVATED AREA

4	06.11.23	DPE RFIs	CC	
3	12.07.23	For Pre-Lodgement	HC	
2	06.07.23	For Information	HC	
1	02.06.23	For Information	HC	
Rev	Date	Description	Initial	Checked

Bannisters 147 Soldiers Point Road

Level 04 Plan

Status	MOD 4		
Scale	As indicated	@ A1	
Drawn	Author	Checked	Checker
Project No.	S12726		
Plot Date	8/11/2023 10:02:52 AM		
BIM			

Drawing no.	Revision
P03.004	4

Melbourne 1 Nicholson Street
Melbourne VIC 3000 Australia
T 03 8664 6200 F 03 8664 6300
email mel@batesmart.com.au
http://www.batesmart.com.au

Sydney 43 Brisbane Street
Surry Hills NSW 2010 Australia
T 02 8354 5100 F 02 8354 5199
email syd@batesmart.com.au
http://www.batesmart.com.au

Bates Smart Architects Pty Ltd ABN 68 094 740 986
NSW Nominated Responsible Architects: Kellie Payne Reg. 6454 / Philip Vivian Reg. 6696 /
Guy Lake Reg. 7119 / Simon Swaney Reg. 7305 / Matt Allen Reg. 8498

BATESSMART™

Check all dimensions and site conditions prior to commencement of any work, the purchase or ordering of any materials, fittings, plant, services or equipment and the preparation of shop drawings and or the fabrication of any components.

Do not scale drawings - refer to figured dimensions only. Any discrepancies shall immediately be referred to the architect for clarification.

All drawings may not be reproduced or distributed without prior permission from the architect.

KEY

LOBBIES & AMENITIES

BOH

LIFTS & STAIRS

CARPARKING & SERVICES

COVERED TERRACE

HOTEL

HOTEL BALCONIES

RESIDENTIAL APARTMENTS

APARTMENT BALCONIES

POOLS

DECKING & FOOTPATH

PARKING DESIGNATED FOR USE BY PATRONS OF THE PUBLIC ELEMENTS

MOD 2 CONCEPT APPROVAL (OUTLINE OF BUILDING AT PLAN CUT LEVEL)

MOD 2 CONCEPT APPROVAL (OUTLINE OF BUILDING BELOW)

UNEXCAVATED AREA

4	06.11.23	DPE RFIs	CC	
3	12.07.23	For Pre-Lodgement	HC	
2	06.07.23	For Information	HC	
1	02.06.23	For Information	HC	
Rev	Date	Description	Initial	Checked

Bannisters 147 Soldiers Point Road

Level 05 Plan

Status	MOD 4		
Scale	As indicated	@ A1	
Drawn	Author	Checked	Checker
Project No.	S12726		
Plot Date	8/11/2023 10:02:55 AM		
BIM			

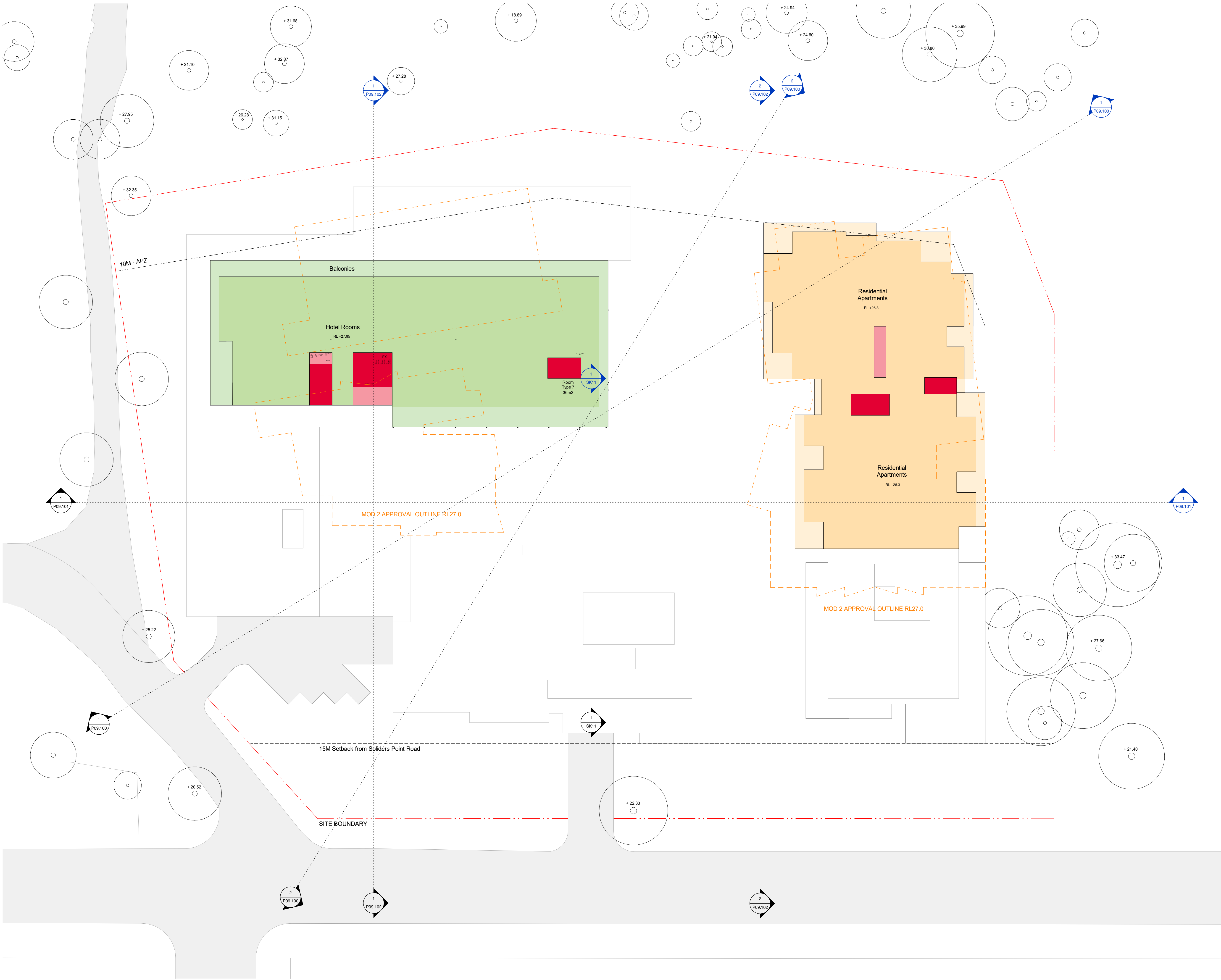
Drawing no.	Revision
P03.005	4

Melbourne 1 Nicholson Street
Melbourne VIC 3000 Australia
T 03 8664 6200 F 03 8664 6300
email mel@batesmart.com.au
http://www.batesmart.com.au

Sydney 43 Brisbane Street
Surry Hills NSW 2010 Australia
T 02 8354 5100 F 02 8354 5199
email syd@batesmart.com.au
http://www.batesmart.com.au

Bates Smart Architects Pty Ltd ABN 68 094 740 986
NSW Nominated Responsible Architects: Kellie Payne Reg. 6454 / Philip Vivian Reg. 6696 /
Guy Lake Reg. 7119 / Simon Swaney Reg. 7305 / Matt Allen Reg. 8498

BATESSMART™



Check all dimensions and site conditions prior to commencement of any work, the purchase or ordering of any materials, fittings, plant, services or equipment and the preparation of shop drawings and or the fabrication of any components.

Do not scale drawings - refer to figured dimensions only. Any discrepancies shall immediately be referred to the architect for clarification.

All drawings may not be reproduced or distributed without prior permission from the architect.

KEY

LOBBIES & AMENITIES

BOH

LIFTS & STAIRS

CARPARKING & SERVICES

COVERED TERRACE

HOTEL

HOTEL BALCONIES

RESIDENTIAL APARTMENTS

APARTMENT BALCONIES

POOLS

DECKING & FOOTPATH

PARKING DESIGNATED FOR USE BY PATRONS OF THE PUBLIC ELEMENTS

MOD 2 CONCEPT APPROVAL (OUTLINE OF BUILDING AT PLAN CUT LEVEL)

MOD 2 CONCEPT APPROVAL (OUTLINE OF BUILDING BELOW)

UNEXCAVATED AREA

UNEXCAVATED AREA

4	06.11.23	DPE RFLs	CC	
3	12.07.23	For Pre-Lodgement	HC	
2	06.07.23	For Information	HC	
1	02.06.23	For Information	HC	
Rev	Date	Description	Initial	Checked

Bannisters
147 Soldiers Point Road

Level 06 Plan

Status	MOD 4		
Scale	As indicated	@ A1	
Drawn	Author	Checked	Checker
Project No.	S12726		
Plot Date	8/11/2023 10:02:58 AM		
BIM			

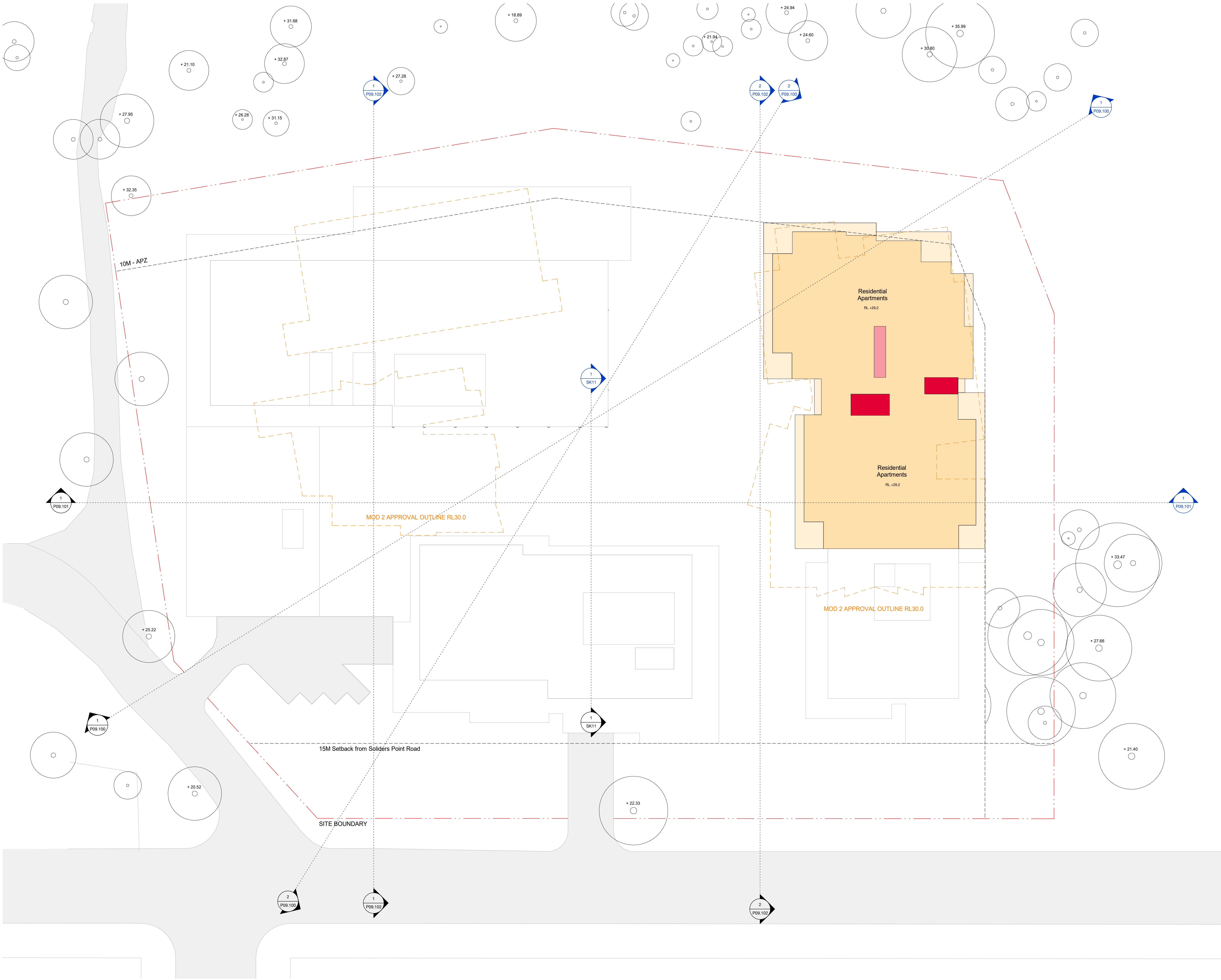
Drawing no.	Revision
P03.006	4

Melbourne 1 Nicholson Street
Melbourne VIC 3000 Australia
T 03 8664 6200 F 03 8664 6300
email mel@batesmart.com.au
http://www.batesmart.com.au

Sydney 43 Brisbane Street
Surry Hills NSW 2010 Australia
T 02 8354 5100 F 02 8354 5199
email syd@batesmart.com.au
http://www.batesmart.com.au

Bates Smart Architects Pty Ltd ABN 68 094 740 986
NSW Nominated Responsible Architects: Kellie Payne Reg. 6454 / Philip Vivian Reg. 6696 /
Guy Lake Reg. 7119 / Simon Swaney Reg. 7305 / Matt Allen Reg. 8498

BATESSMART™



Check all dimensions and site conditions prior to commencement of any work, the purchase or ordering of any materials, fittings, plant, services or equipment and the preparation of shop drawings and or the fabrication of any components.

Do not scale drawings - refer to figured dimensions only. Any discrepancies shall immediately be referred to the architect for clarification.

All drawings may not be reproduced or distributed without prior permission from the architect.

KEY

- LOBBIES & AMENITIES
- BOH
- LIFTS & STAIRS
- CARPARKING & SERVICES
- COVERED TERRACE
- HOTEL
- HOTEL BALCONIES
- RESIDENTIAL APARTMENTS
- APARTMENT BALCONIES
- POOLS
- DECKING & FOOTPATH
- PARKING DESIGNATED FOR USE BY PATRONS OF THE PUBLIC ELEMENTS
- MOD 2 CONCEPT APPROVAL (OUTLINE OF BUILDING AT PLAN CUT LEVEL)
- MOD 2 CONCEPT APPROVAL (OUTLINE OF BUILDING BELOW)
- UNEXCAVATED AREA

4	06.11.23	DPE RFIs	CC	
3	12.07.23	For Pre-Lodgement	HC	
2	06.07.23	For Information	HC	
1	02.06.23	For Information	HC	
Rev	Date	Description	Initial	Checked

Bannisters
147 Soldiers Point Road

Level 07 Plan

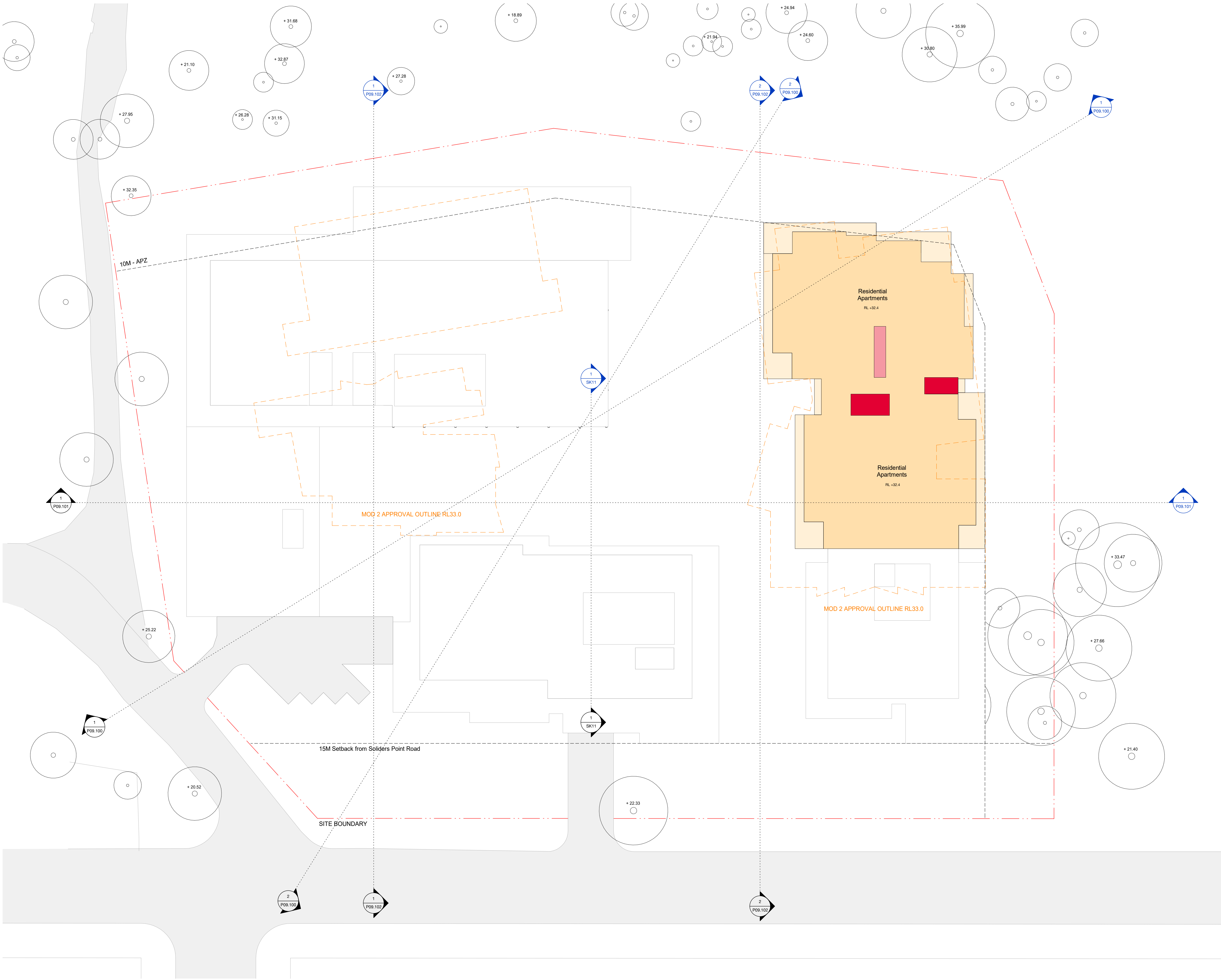
Status	MOD 4		
Scale	As indicated	@ A1	
Drawn	Author	Checked	Checker
Project No.	S12726		
Plot Date	8/11/2023 10:03:00 AM		

BIM	
Drawing no.	Revision
P03.007	4

Melbourne 1 Nicholson Street
Melbourne VIC 3000 Australia
T 03 8664 6200 F 03 8664 6300
email mel@batesmart.com.au
http://www.batesmart.com.au

Sydney 43 Brisbane Street
Surry Hills NSW 2010 Australia
T 02 8354 5100 F 02 8354 5199
email syd@batesmart.com.au
http://www.batesmart.com.au

Bates Smart Architects Pty Ltd ABN 68 094 740 986
NSW Nominated Responsible Architects: Kellie Payne Reg. 6454 / Philip Vivian Reg. 6696 /
Guy Lake Reg. 7119 / Simon Swaney Reg. 7305 / Matt Allen Reg. 8498



Check all dimensions and site conditions prior to commencement of any work, the purchase or ordering of any materials, fittings, plant, services or equipment and the preparation of shop drawings and or the fabrication of any components.

Do not scale drawings - refer to figured dimensions only. Any discrepancies shall immediately be referred to the architect for clarification.

All drawings may not be reproduced or distributed without prior permission from the architect.

KEY

LOBBIES & AMENITIES

BOH

LIFTS & STAIRS

CARPARKING & SERVICES

COVERED TERRACE

HOTEL

HOTEL BALCONIES

RESIDENTIAL APARTMENTS

APARTMENT BALCONIES

POOLS

DECKING & FOOTPATH

PARKING DESIGNATED FOR USE BY PATRONS OF THE PUBLIC ELEMENTS

MOD 2 CONCEPT APPROVAL (OUTLINE OF BUILDING AT PLAN CUT LEVEL)

MOD 2 CONCEPT APPROVAL (OUTLINE OF BUILDING BELOW)

UNEXCAVATED AREA

4	06.11.23	DPE RfIs	CC	
3	12.07.23	For Pre-Lodgement	HC	
2	06.07.23	For Information	HC	
1	02.06.23	For Information	HC	
Rev	Date	Description	Initial	Checked

Bannisters
147 Soldiers Point Road

Level 08 Plan

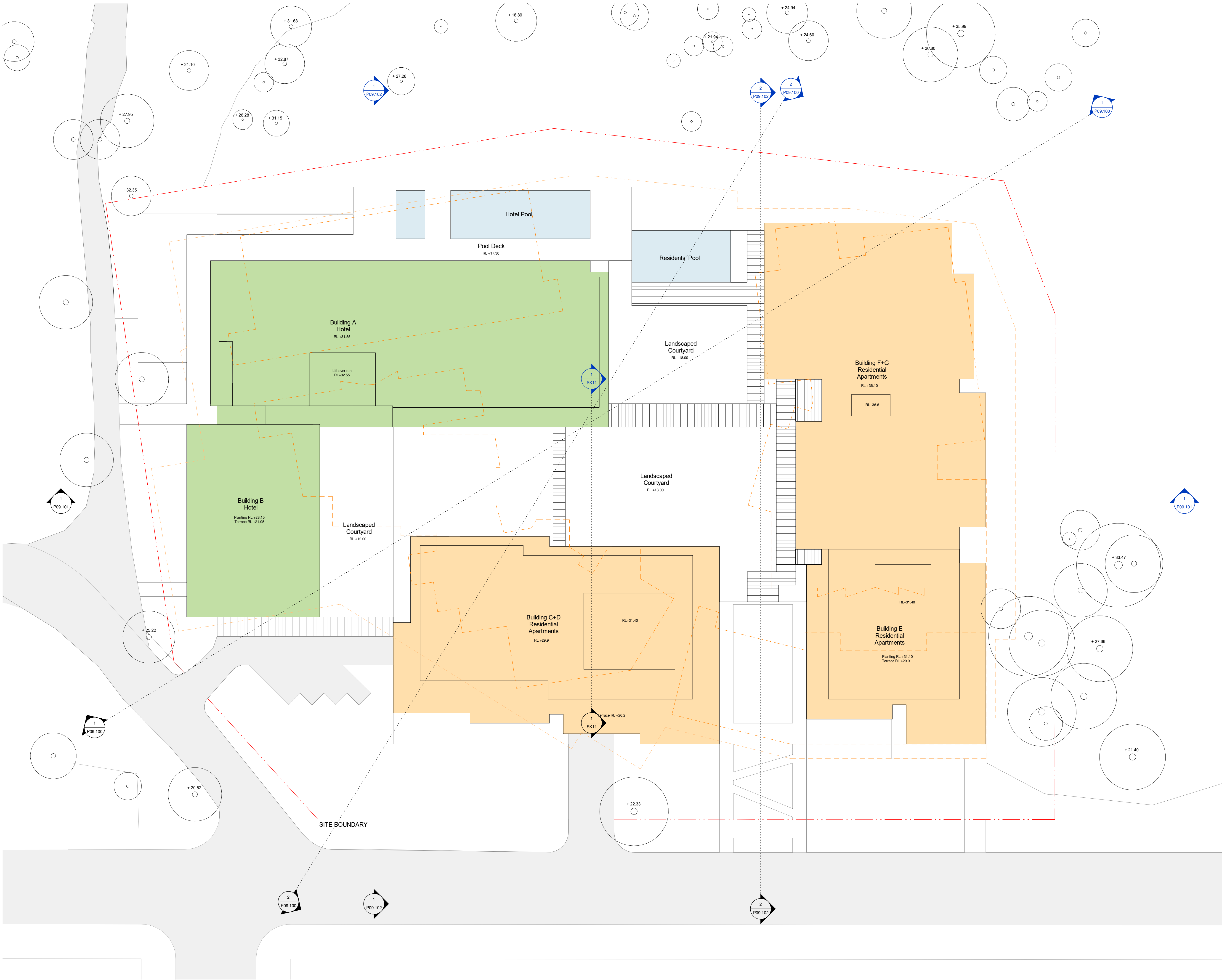
Status	MOD 4		
Scale	As indicated	@ A1	
Drawn	Author	Checked	Checker
Project No.	S12726		
Plot Date	8/11/2023 10:03:03 AM		
BIM			

Drawing no.	Revision
P03.008	4

Melbourne 1 Nicholson Street
Melbourne VIC 3000 Australia
T 03 8664 6200 F 03 8664 6300
email mel@batesmart.com.au
http://www.batesmart.com.au

Sydney 43 Brisbane Street
Surry Hills NSW 2010 Australia
T 02 8354 5100 F 02 8354 5199
email syd@batesmart.com.au
http://www.batesmart.com.au

Bates Smart Architects Pty Ltd ABN 68 094 740 986
NSW Nominated Responsible Architects: Kellie Payne Reg. 6454 / Philip Vivian Reg. 6696 / Guy Lake Reg. 7119 / Simon Swaney Reg. 7305 / Matt Allen Reg. 8498



Check all dimensions and site conditions prior to commencement of any work, the purchase or ordering of any materials, fittings, plant, services or equipment and the preparation of shop drawings and or the fabrication of any components.

Do not scale drawings - refer to figured dimensions only. Any discrepancies shall immediately be referred to the architect for clarification.

All drawings may not be reproduced or distributed without prior permission from the architect.

- KEY
- HOTEL
 - RESIDENTIAL APARTMENTS
 - POOLS

GFA BREAKDOWN

Residential Breakdown
77 x Apartments
TOTAL GFA: 11,349m²

Hotel Breakdown
85 x Hotel Rooms
TOTAL GFA: 4,261m²

Ancillary Hotel Uses
TOTAL GFA: 3,990m²

TOTAL GFA: 19,600m²

FSR 1.6:1

Car Parking
320 Total Parking Spaces

- 136 Residential Spaces
- 69 Public Patron
- 85 Hotel Guests
- 30 Hotel Staff

4	06.11.23	DPE RFIs	CC	
3	12.07.23	For Pre-Lodgement	HC	
2	06.07.23	For Information	HC	
1	02.06.23	For Information	HC	
Rev	Date	Description	Initial	Checked

Bannisters
147 Soldiers Point Road

Roof Plan

Status	MOD 4		
Scale	As indicated	@	A1
Drawn	Author	Checked	Checker
Project No.	S12726		
Plot Date	8/11/2023 10:03:06 AM		
BIM			

BIM	
Drawing no.	Revision
P03.100	4

Melbourne 1 Nicholson Street
Melbourne VIC 3000 Australia
T 03 8664 6200 F 03 8664 6300
email mel@batesmart.com.au
http://www.batesmart.com.au

Sydney 43 Brisbane Street
Surry Hills NSW 2010 Australia
T 02 8354 5100 F 02 8354 5199
email syd@batesmart.com.au
http://www.batesmart.com.au

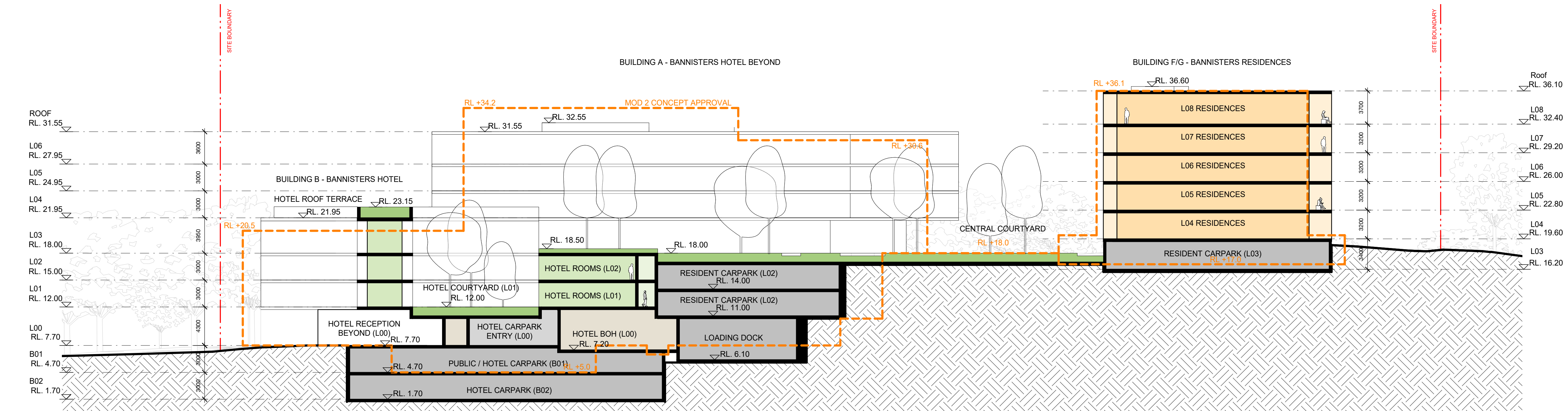
Bates Smart Architects Pty Ltd ABN 68 094 740 986
NSW Nominated Responsible Architects: Kellie Payne Reg. 6454 / Philip Vivian Reg. 6696 /
Guy Lake Reg. 7119 / Simon Swaney Reg. 7305 / Matt Allen Reg. 8498

BATESSMART

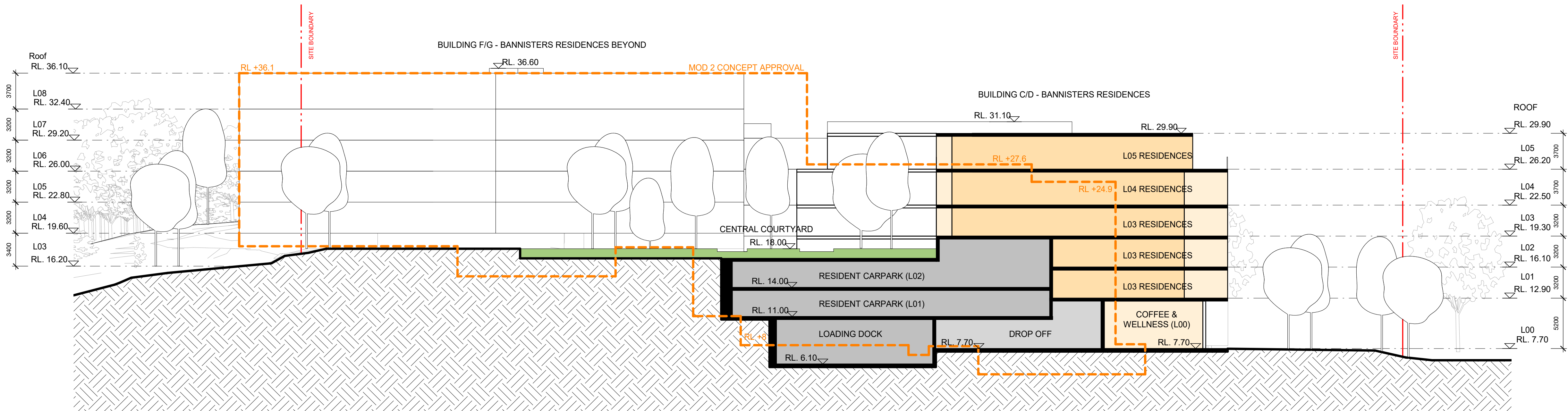
Check all dimensions and site conditions prior to commencement of any work, the purchase or ordering of any materials, fittings, plant, services or equipment and the preparation of shop drawings and or the fabrication of any components.

Do not scale drawings - refer to figured dimensions only. Any discrepancies shall immediately be referred to the architect for clarification.

All drawings may not be reproduced or distributed without prior permission from the architect.



1 Section 01 North South
1 : 250



2 Section 02 West East
1 : 250

3	06.11.23	DPE RFIs	CC
2	06.07.23	For Information	HC
1	02.06.23	For Information	HC
Rev	Date	Description	Initial
			Checked

Bannisters 147 Soldiers Point Road

Sections 01 & 02

Status	MOD 4
Scale	1 : 250 @ A1
Drawn	Author
Project No.	S12726
Plot Date	8/11/2023 10:03:14 AM
BIM	

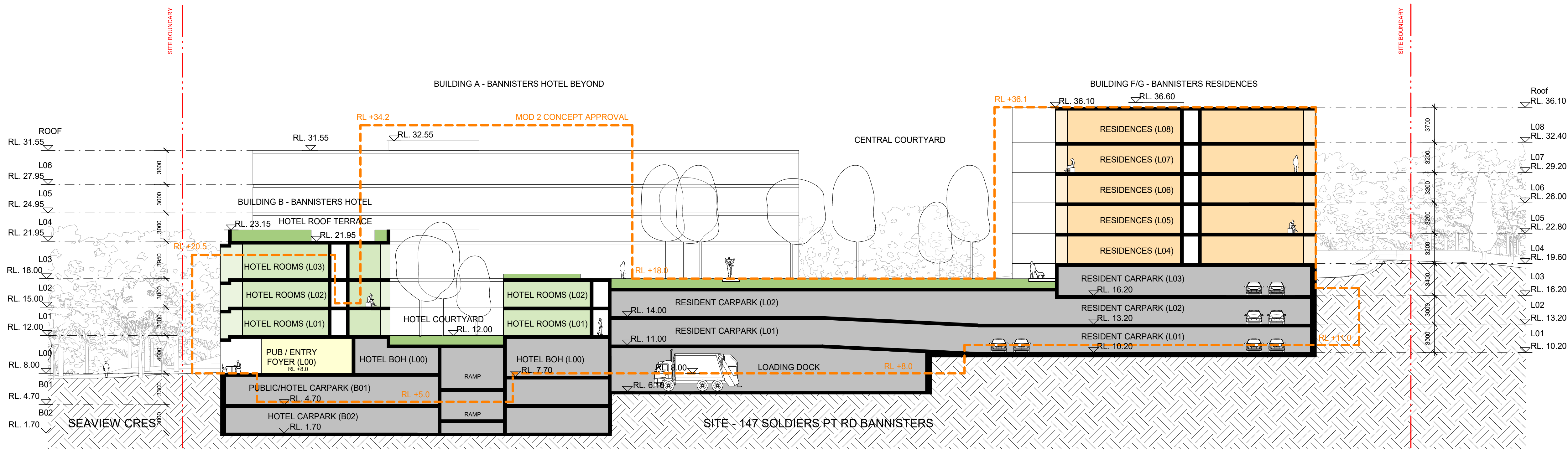
Drawing no.	Revision
P09.100	3

Melbourne 1 Nicholson Street
Melbourne VIC 3000 Australia
T 03 8664 6200 F 03 8664 6300
email mel@batesmart.com.au
http://www.batesmart.com.au

Sydney 43 Brisbane Street
Surry Hills NSW 2010 Australia
T 02 8354 5100 F 02 8354 5199
email syd@batesmart.com.au
http://www.batesmart.com.au

Bates Smart Architects Pty Ltd ABN 68 094 740 986
NSW Nominated Responsible Architects: Kellie Payne Reg. 6454 / Philip Vivian Reg. 6696 /
Guy Lake Reg. 7119 / Simon Swaney Reg. 7305 / Matt Allen Reg. 8498

BATESSMART



1 Section 03 Central Courtyard
1 : 250

3	06.11.23	DPE RFIs	CC	
2	06.07.23	For Information	HC	
1	02.06.23	For Information	HC	
Rev	Date	Description	Initial	Checked

Bannisters 147 Soldiers Point Road

Sections 03

Status	MOD 4		
Scale	1 : 250	@	A1
Drawn	Author	Checked	Checker
Project No.	S12726		
Plot Date	8/11/2023 10:03:17 AM		

BIM	
Drawing no.	Revision
P09.101	3

Melbourne 1 Nicholson Street
Melbourne VIC 3000 Australia
T 03 8664 6200 F 03 8664 6300
email mel@batesmart.com.au
http://www.batesmart.com.au

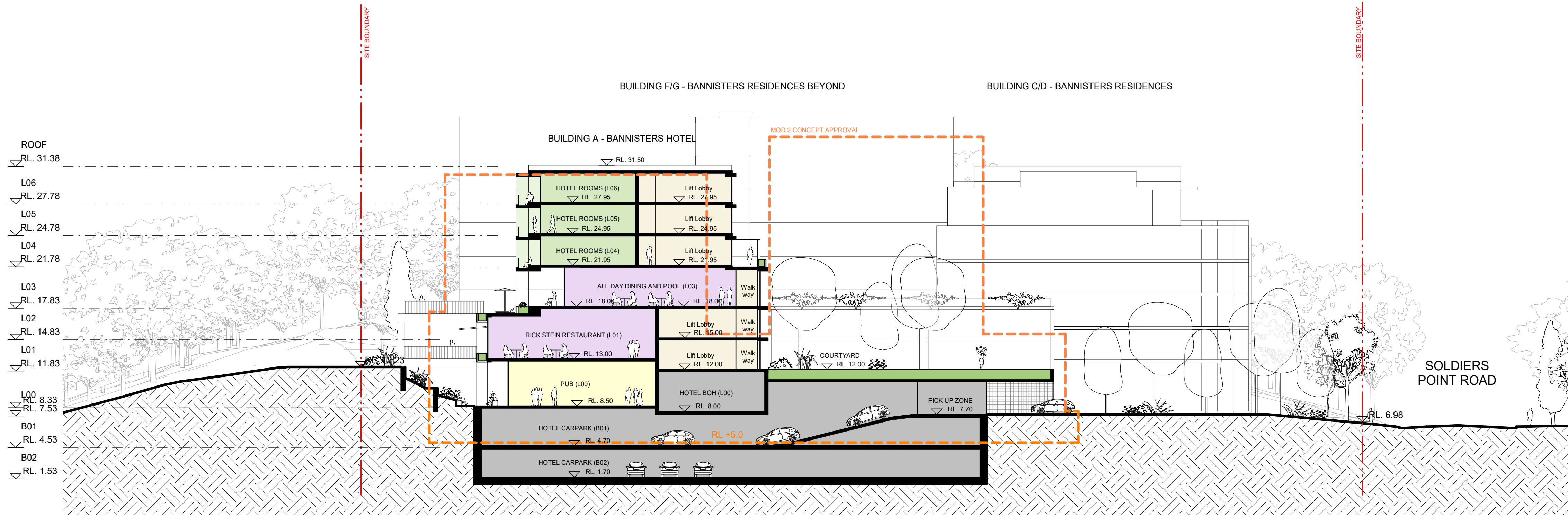
Sydney 43 Brisbane Street
Surry Hills NSW 2010 Australia
T 02 8354 5100 F 02 8354 5199
email syd@batesmart.com.au
http://www.batesmart.com.au

Bates Smart Architects Pty Ltd ABN 68 094 740 986
NSW Nominated Responsible Architects: Kellie Payne Reg. 6454 / Philip Vivian Reg. 6696 /
Guy Lake Reg. 7119 / Simon Swaney Reg. 7305 / Matt Allen Reg. 8498

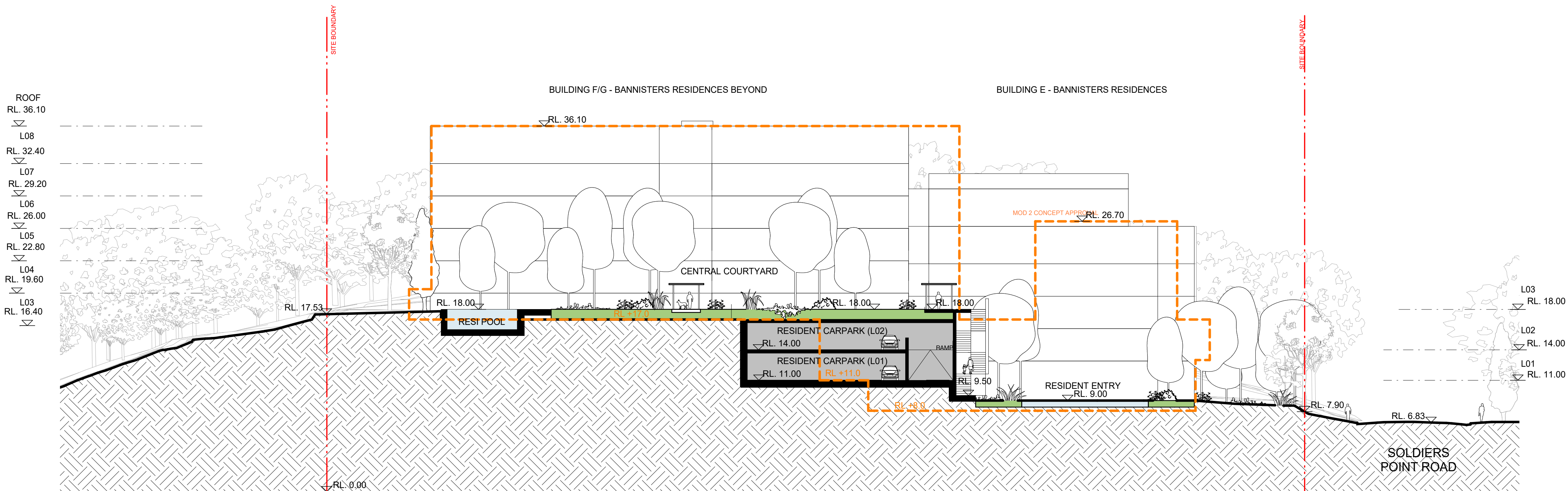
Check all dimensions and site conditions prior to commencement of any work, the purchase or ordering of any materials, fittings, plant, services or equipment and the preparation of shop drawings and or the fabrication of any components.

Do not scale drawings - refer to figured dimensions only. Any discrepancies shall immediately be referred to the architect for clarification.

All drawings may not be reproduced or distributed without prior permission from the architect.



1 Section 04 Hotel Pool + Courtyard (Current)
1 : 250



2 Section 05 - H Resi Pool + Courtyard (Current)
1 : 250

3	06.11.23	DPE RFIs	CC	
2	06.07.23	For Information	HC	
1	02.06.23	For Information	HC	
Rev	Date	Description	Initial	Checked

Bannisters 147 Soldiers Point Road

Sections 04 & 05

Status	MOD 4		
Scale	1 : 250	@ A1	
Drawn	Author	Checked	Checker
Project No.	S12726		
Plot Date	8/11/2023 10:03:31 AM		
BIM			

Drawing no.	Revision
P09.102	3

Melbourne 1 Nicholson Street
Melbourne VIC 3000 Australia
T 03 8664 6200 F 03 8664 6300
email mel@batesmart.com.au
http://www.batesmart.com.au

Sydney 43 Brisbane Street
Surry Hills NSW 2010 Australia
T 02 8354 5100 F 02 8354 5199
email syd@batesmart.com.au
http://www.batesmart.com.au

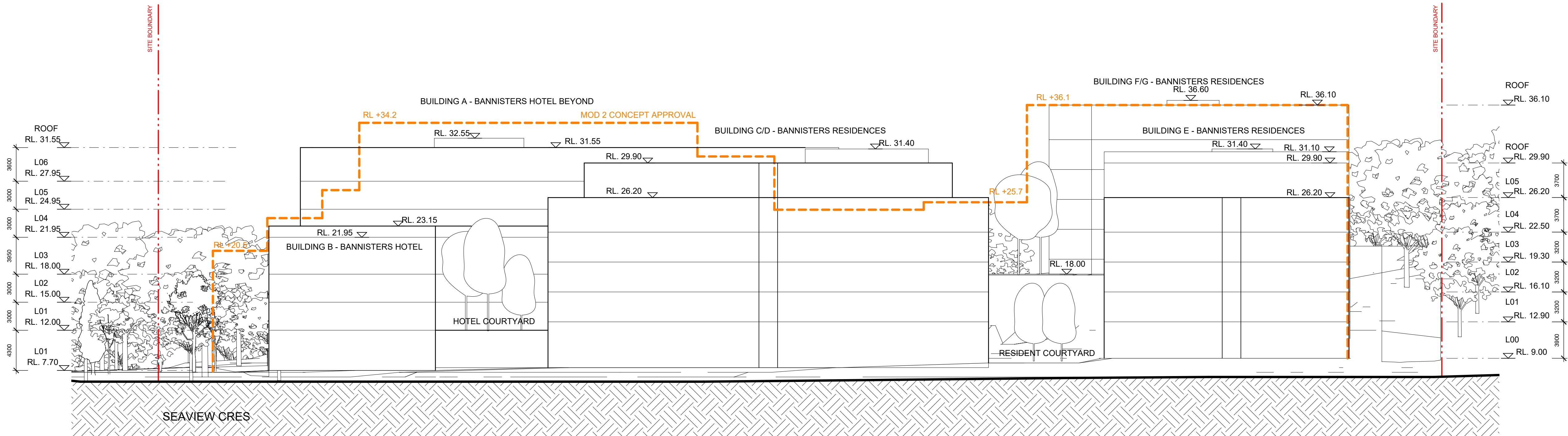
Bates Smart Architects Pty Ltd ABN 68 094 740 986
NSW Nominated Responsible Architects: Kellie Payne Reg. 6454 / Philip Vivian Reg. 6696 /
Guy Lake Reg. 7119 / Simon Swaney Reg. 7305 / Matt Allen Reg. 8498

BATESSMART

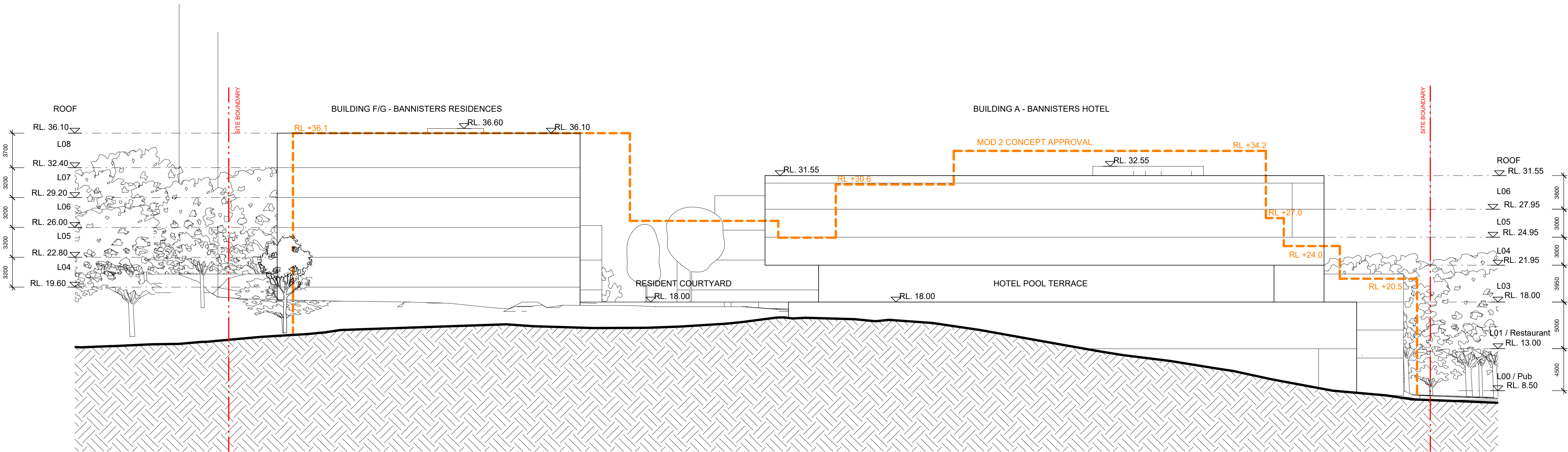
Check all dimensions and site conditions prior to commencement of any work, the purchase or ordering of any materials, fittings, plant, services or equipment and the preparation of shop drawings and or the fabrication of any components.

Do not scale drawings - refer to figured dimensions only. Any discrepancies shall immediately be referred to the architect for clarification.

All drawings may not be reproduced or distributed without prior permission from the architect.



1 Elevation 01 Soldiers Pt Road
1 : 250



2 Elevation 02 Eastern Boundary
1 : 250

2	06.07.23	For Information	HC
1	02.06.23	For Information	HC
Rev	Date	Description	Initial

Bannisters 147 Soldiers Point Road

Elevations - Soldiers Point Road & East

Status	MOD 4
Scale	1 : 250 @ A1
Drawn	Author
Project No.	S12726
Plot Date	12/07/2023 10:26:26 AM
BIM	

Drawing no.	Revision
P09.000	2

Melbourne 1 Nicholson Street
Melbourne VIC 3000 Australia
T 03 8664 6200 F 03 8664 6300
email mel@batesmart.com.au
http://www.batesmart.com.au

Sydney 43 Brisbane Street
Surry Hills NSW 2010 Australia
T 02 8354 5100 F 02 8354 5199
email syd@batesmart.com.au
http://www.batesmart.com.au

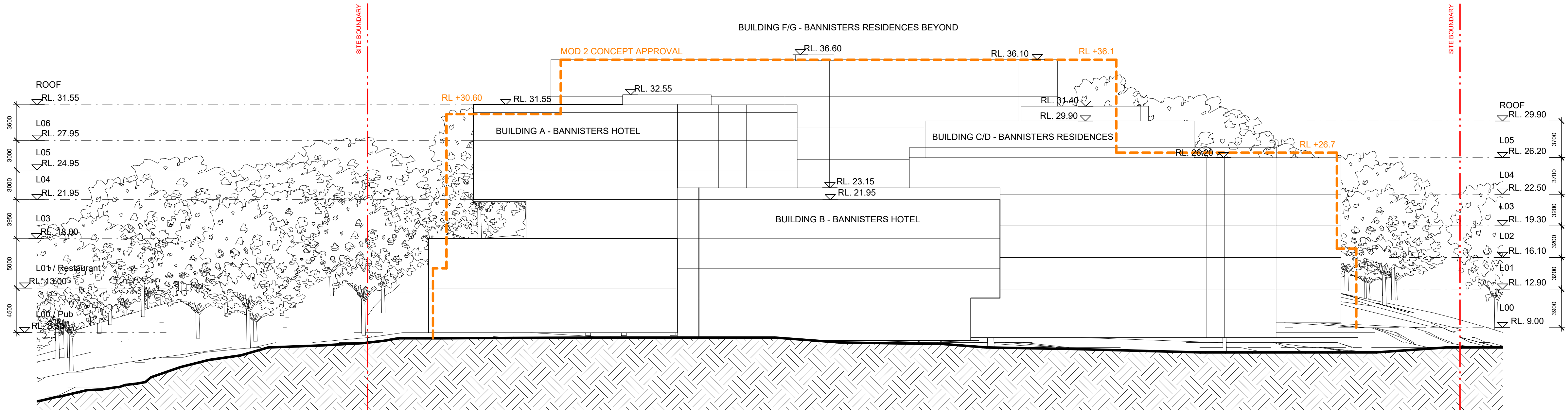
Bates Smart Architects Pty Ltd ABN 68 094 740 986
NSW Nominated Responsible Architects: Kellie Payne Reg. 6454 / Philip Vivian Reg. 6696 /
Guy Lake Reg. 7119 / Simon Swaney Reg. 7305 / Matt Allen Reg. 8498

BATESSMART

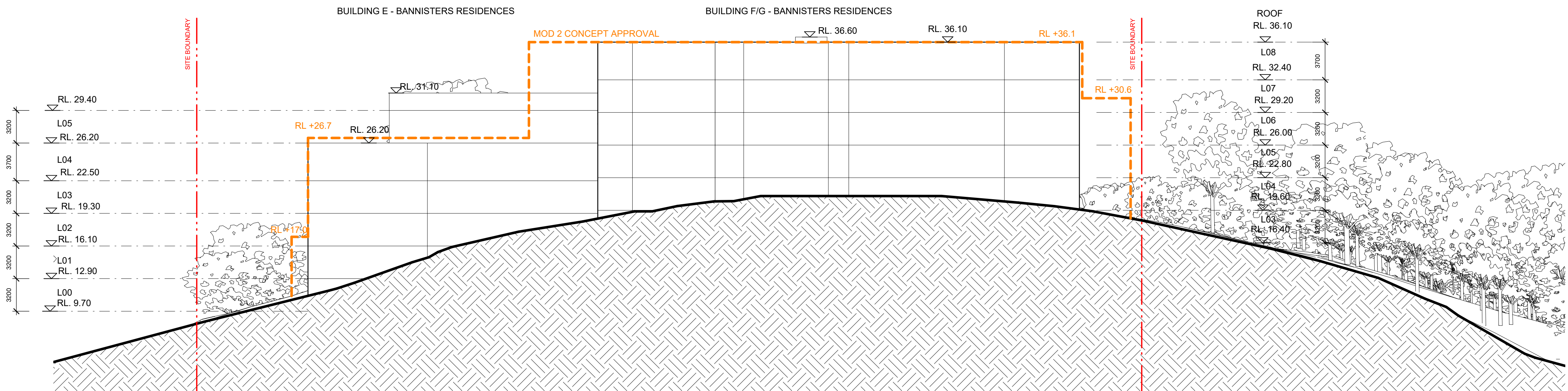
Check all dimensions and site conditions prior to commencement of any work, the purchase or ordering of any materials, fittings, plant, services or equipment and the preparation of shop drawings and or the fabrication of any components.

Do not scale drawings - refer to figured dimensions only. Any discrepancies shall immediately be referred to the architect for clarification.

All drawings may not be reproduced or distributed without prior permission from the architect.



1 Elevation 03 Northern Boundary
1 : 250



2 Elevation 04 Southern Boundary
1 : 250

2	06.07.23	For Information	HC
1	02.06.23	For Information	HC
Rev	Date	Description	Initial

Bannisters 147 Soldiers Point Road

Elevations - North & South

Status	MOD 4
Scale	1 : 250 @ A1
Drawn	Author
Project No.	S12726
Plot Date	12/07/2023 10:26:29 AM
BIM	

Drawing no.	Revision
P09.001	2

Melbourne 1 Nicholson Street
Melbourne VIC 3000 Australia
T 03 8664 6200 F 03 8664 6300
email mel@batesmart.com.au
http://www.batesmart.com.au

Sydney 43 Brisbane Street
Surry Hills NSW 2010 Australia
T 02 8354 5100 F 02 8354 5199
email syd@batesmart.com.au
http://www.batesmart.com.au

Bates Smart Architects Pty Ltd ABN 68 094 740 986
NSW Nominated Responsible Architects: Kellie Payne Reg. 6454 / Philip Vivian Reg. 6696 /
Guy Lake Reg. 7119 / Simon Swaney Reg. 7305 / Matt Allen Reg. 8498

BATESSMART